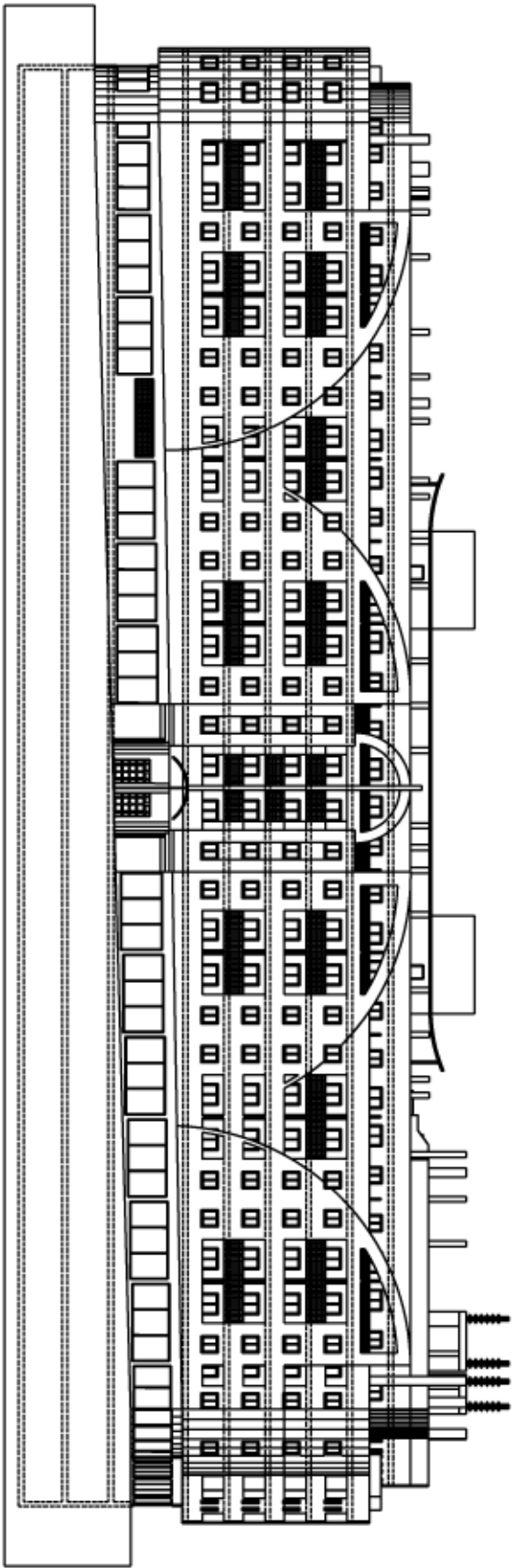
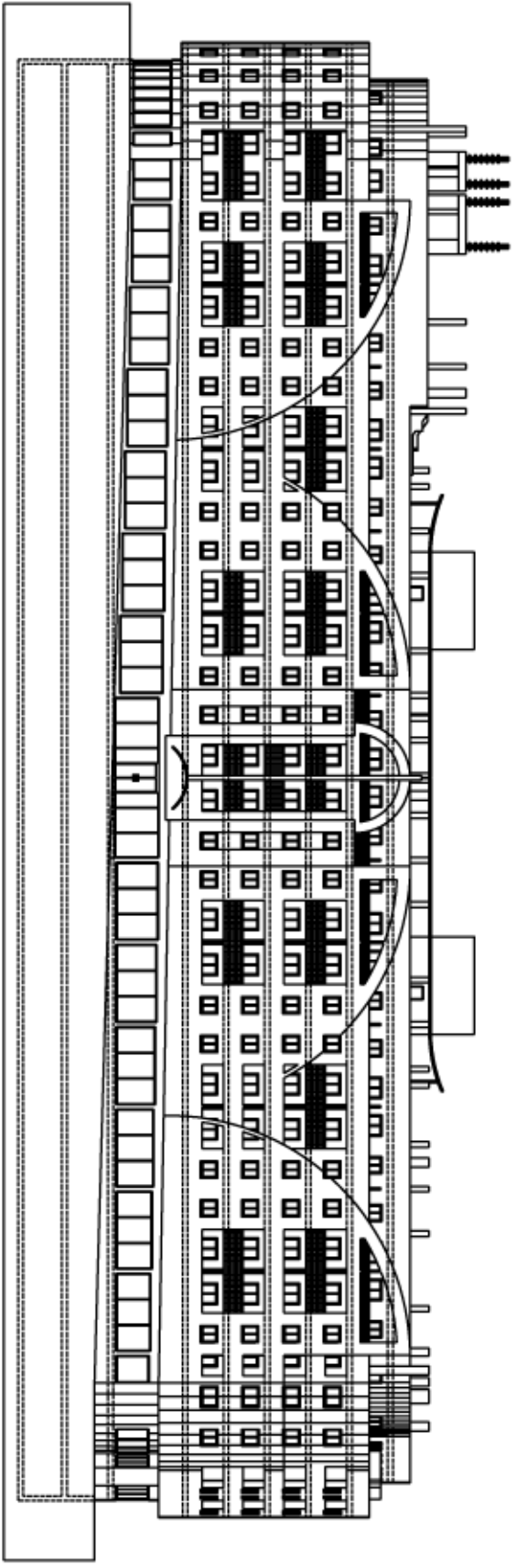


Residencial
Parque de las Avenidas III - Fase I

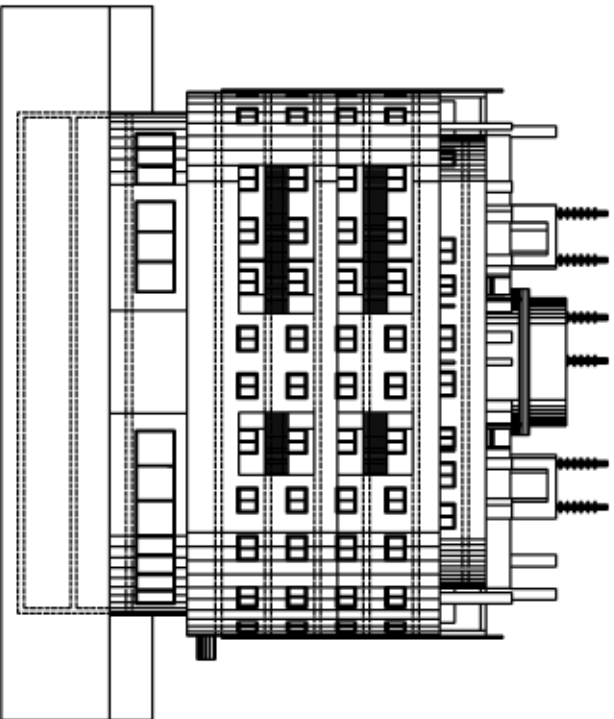


CALLE TRASERA

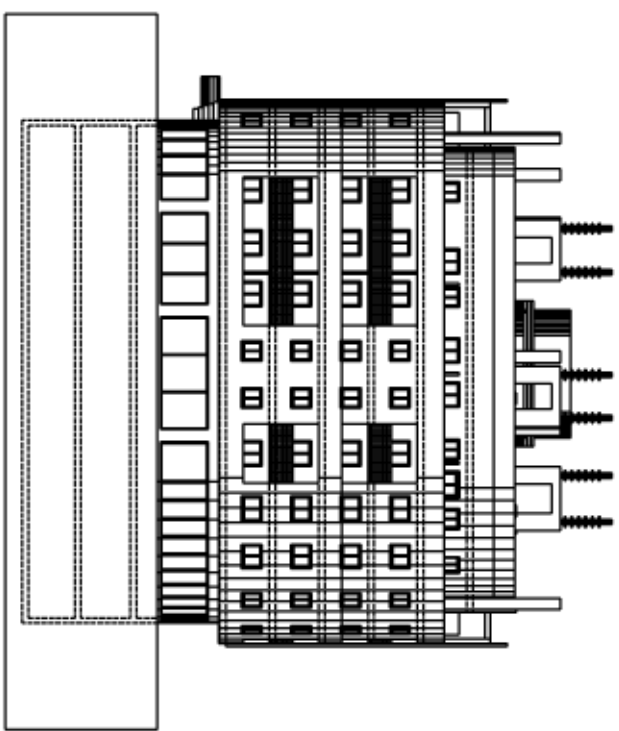


AVENIDA DE RONDA

Residencial
Parque de las Avenidas III - Fase I

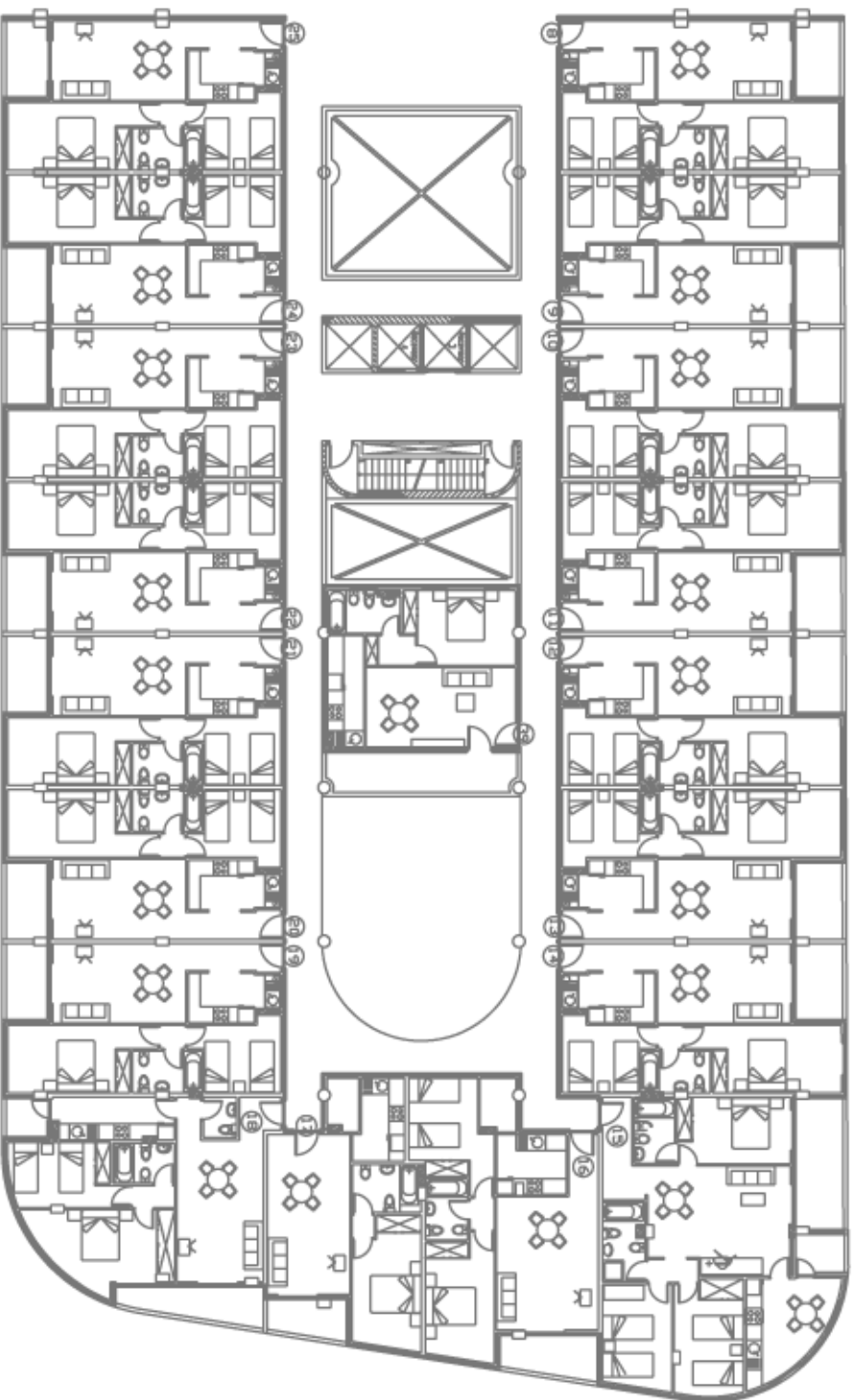


RAMBLA JUAN MATEO



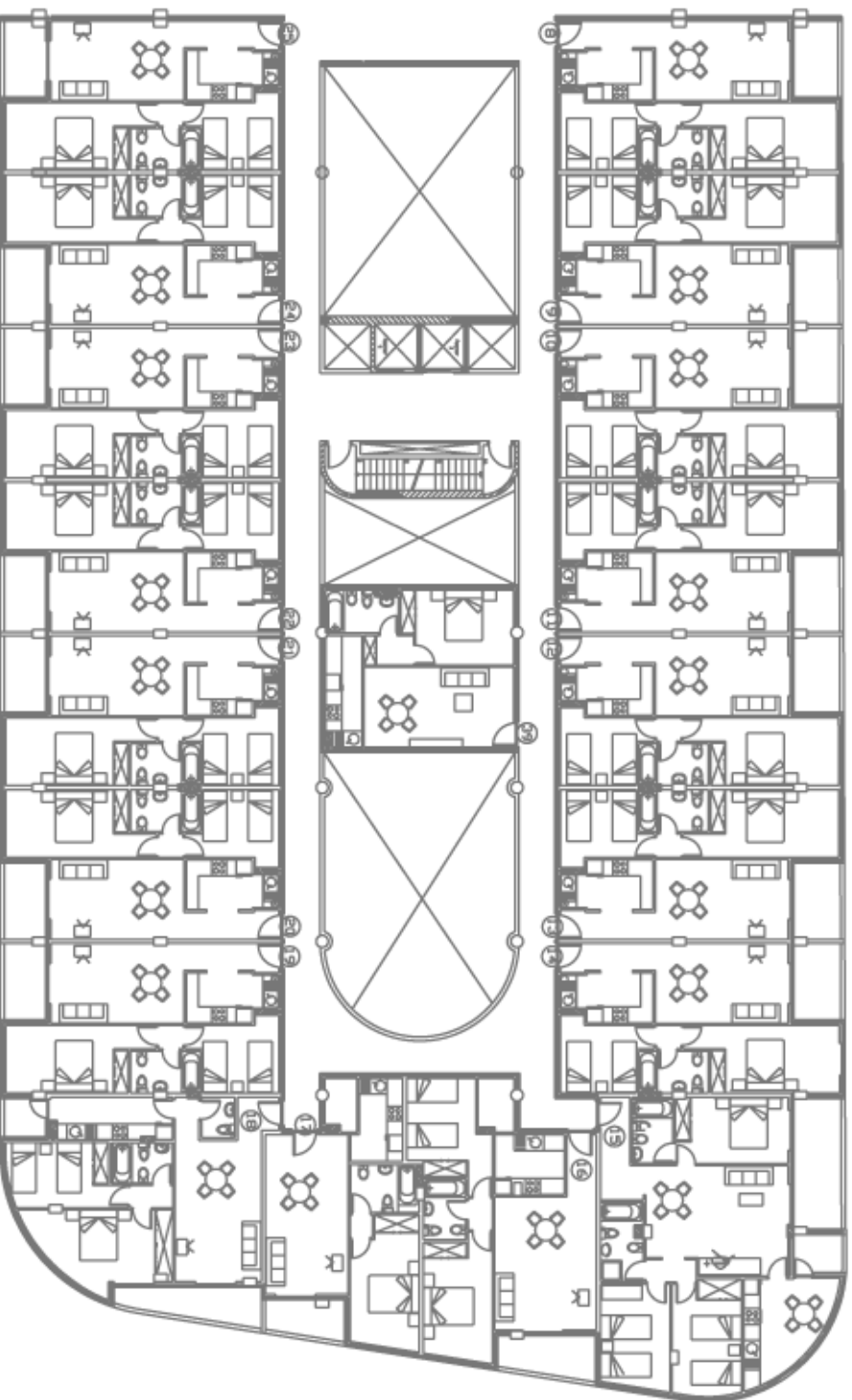
JDAQUIN CHAPARRIETA

Residencial
Parque de las Avenidas III - Fase I



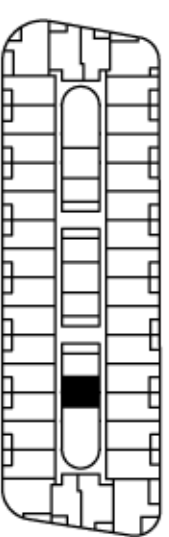
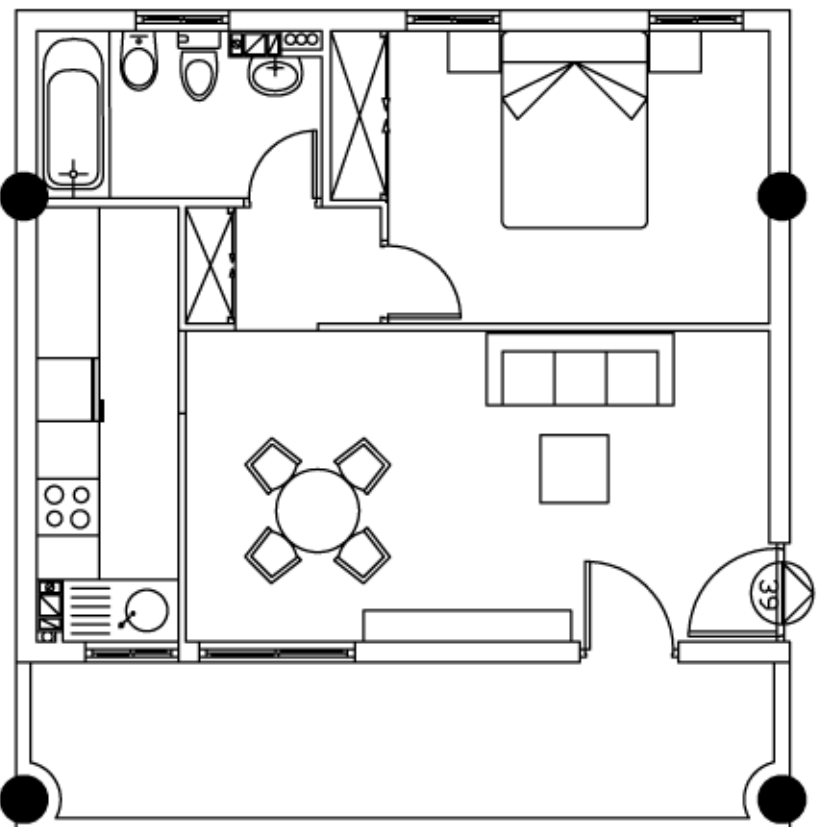
Planta Primera

Residencial
Parque de las Avenidas III - Fase I



Plantas Segunda, Tercera y Cuarta

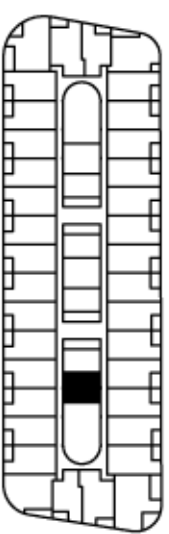
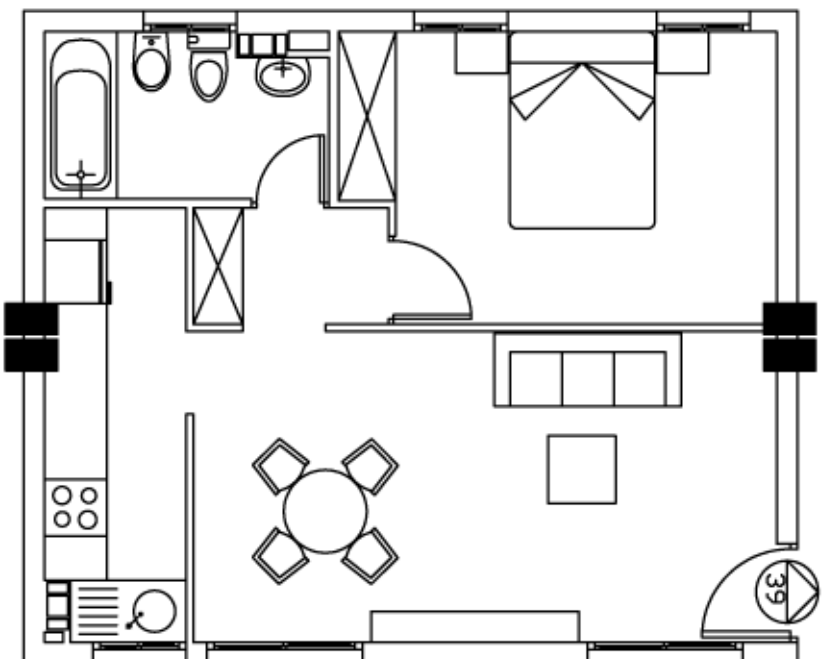
Residencial
Parque de las Avenidas III - Fase I



PLANTA 1ª
Vivienda n° 39

SUP. CONST + P. PROPORCIONAL	SUP. CONST TERRAZA	TOTAL
56.31 m²	12.31 m²	68.62m²

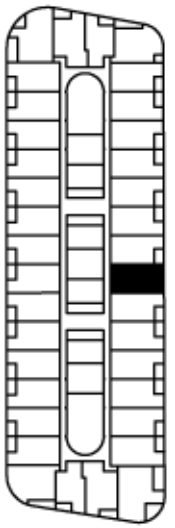
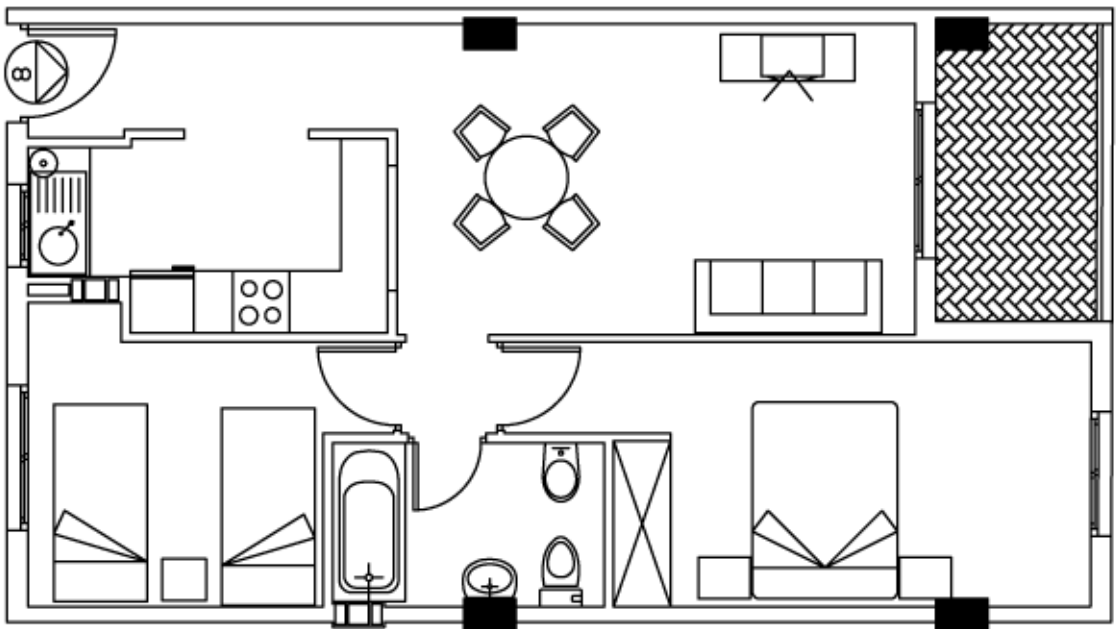
Residencial
Parque de las Avenidas III - Fase I



PLANTAS 2ª, 3ª Y 4ª
Vivienda n° 39

SUP. CONST + P. PROPORCIONAL	TOTAL
56,31 m ²	56,31 m ²

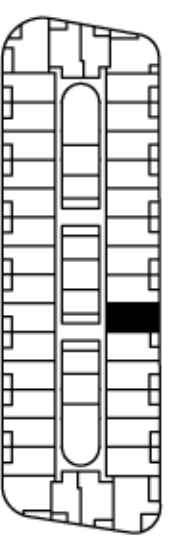
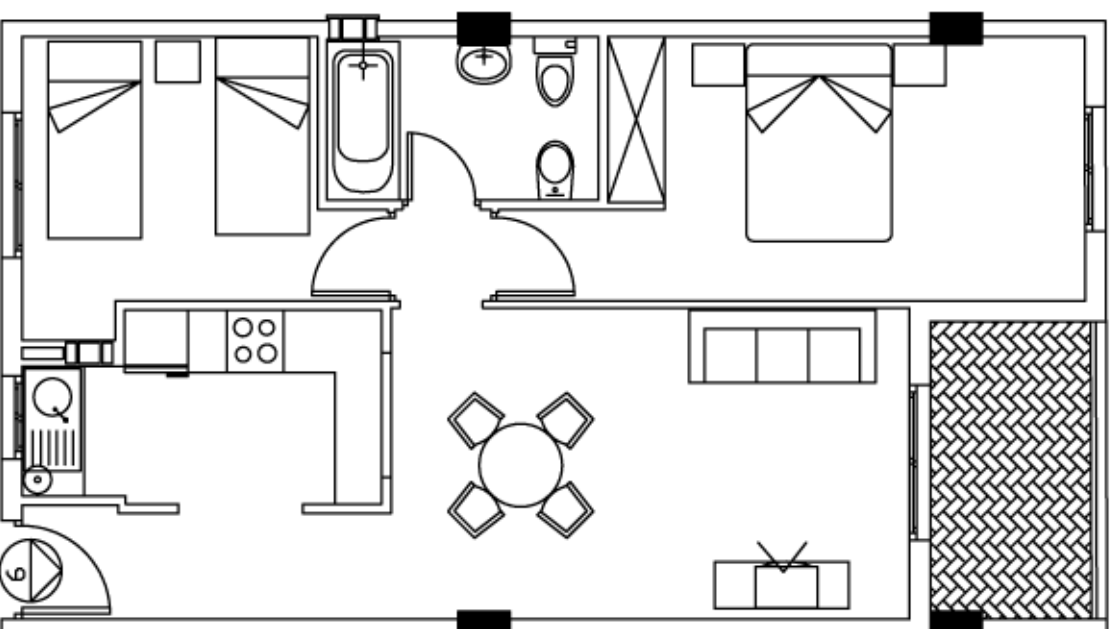
Residencial
Parque de las Avenidas III - Fase I



PLANTA TPO
Vivenda n° 8

SUP. CONST + P. PROPORCIONAL	SUP. CONST TERRAZA	TOTAL
67.84 m ²	5.02 m ²	72.86 m ²

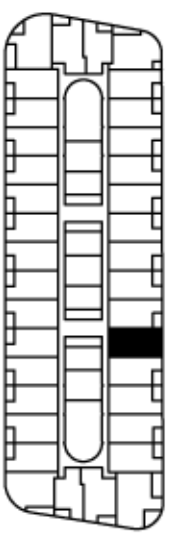
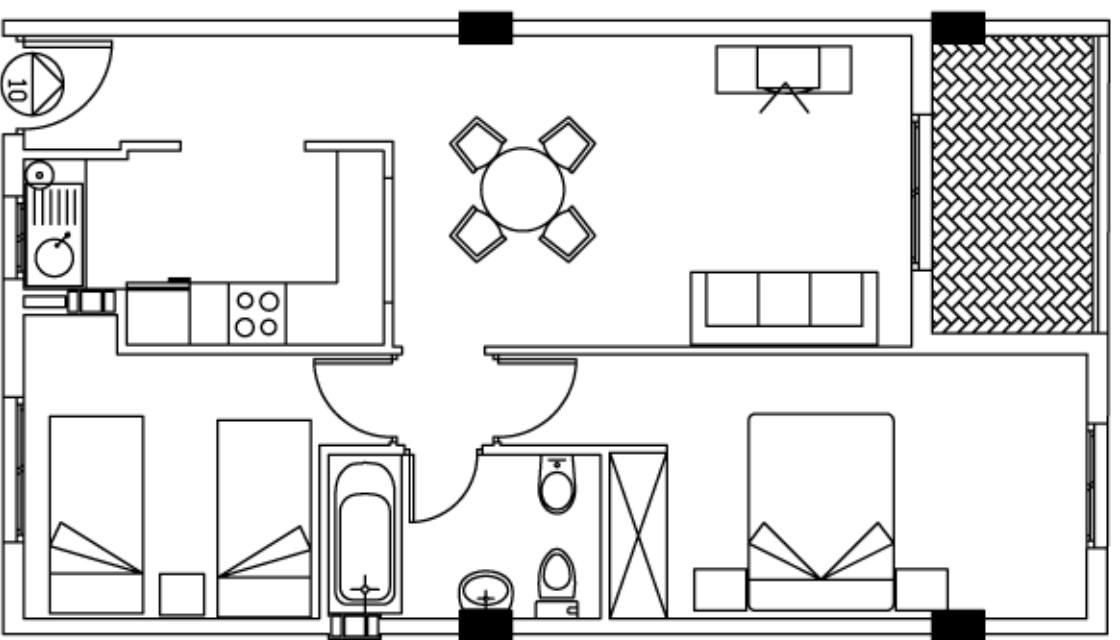
Residencial
Parque de las Avenidas III - Fase I



PLANTA TIPO
Vivienda n° 9

SUP. CONST + P. PROPORCIONAL	SUP. CONST TERRAZA	TOTAL
67.84 m ²	5.02 m ²	72.86 m ²

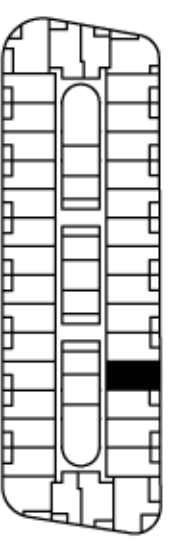
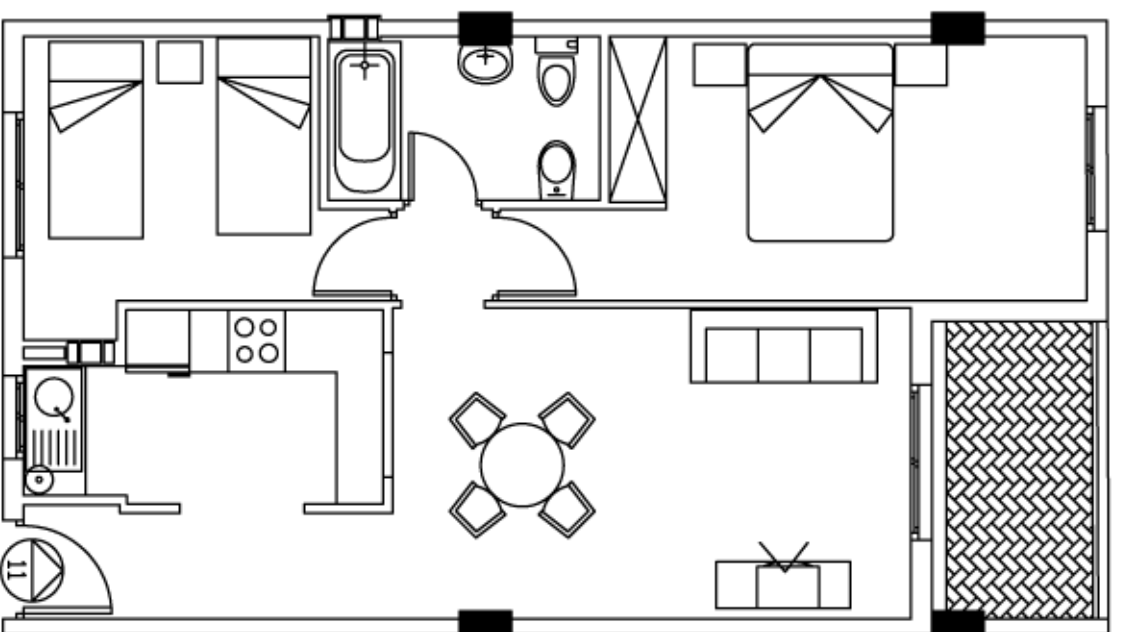
Residencial
Parque de las Avenidas III - Fase I



PLANTA TPO
Vivienda n° 10

SUP. CONST + P. PROPORCIONAL	SUP. CONST TERRAZA	TOTAL
67.84 m ²	5.02 m ²	72.86 m ²

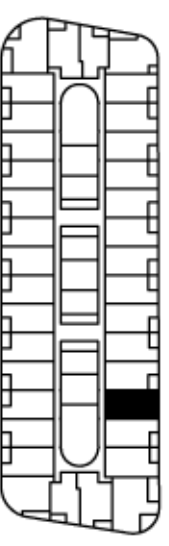
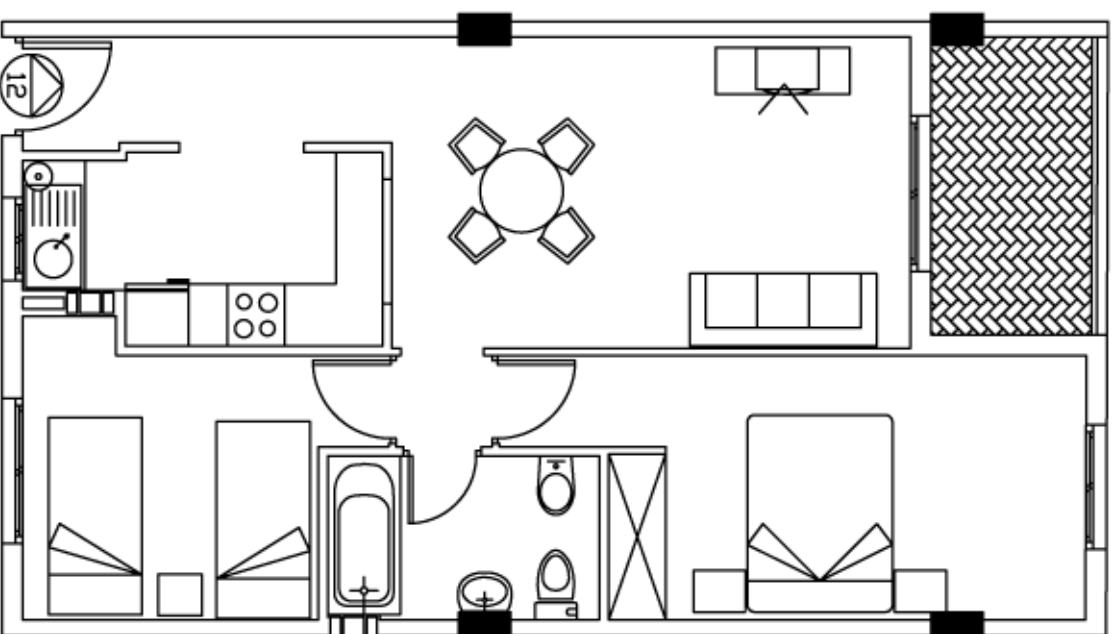
Residencial
Parque de las Avenidas III - Fase I



PLANTA TIPO
Vivienda n°11

SUP. CONST + P. PROPORCIONAL	SUP. CONST TERRAZA	TOTAL
67,84 m ²	5,02 m ²	72,86 m ²

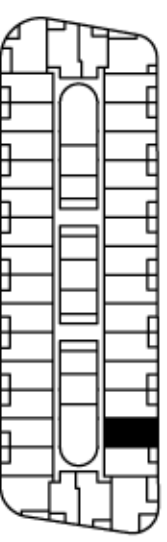
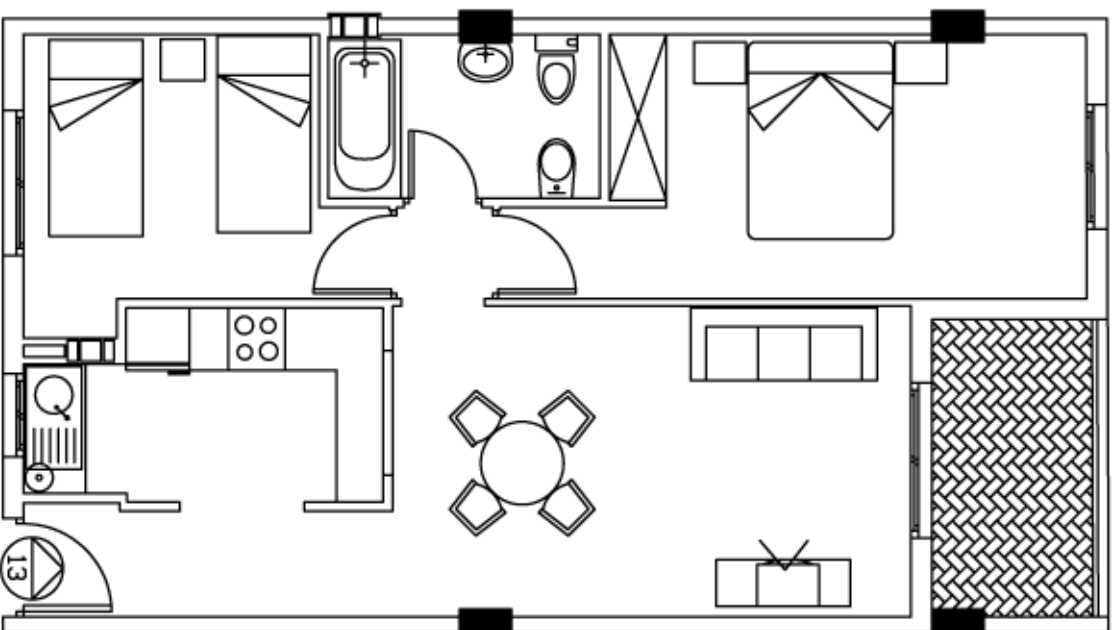
Residencial
Parque de las Avenidas III - Fase I



PLANTA TPO
Vivienda n° 12

SUP. CONST + P. PROPORCIONAL	SUP. CONST TERRAZA	TOTAL
67,84 m ²	5,02 m ²	72,86 m ²

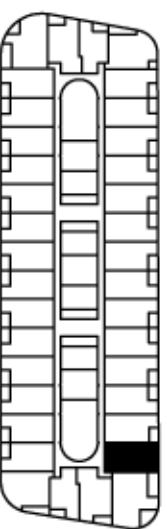
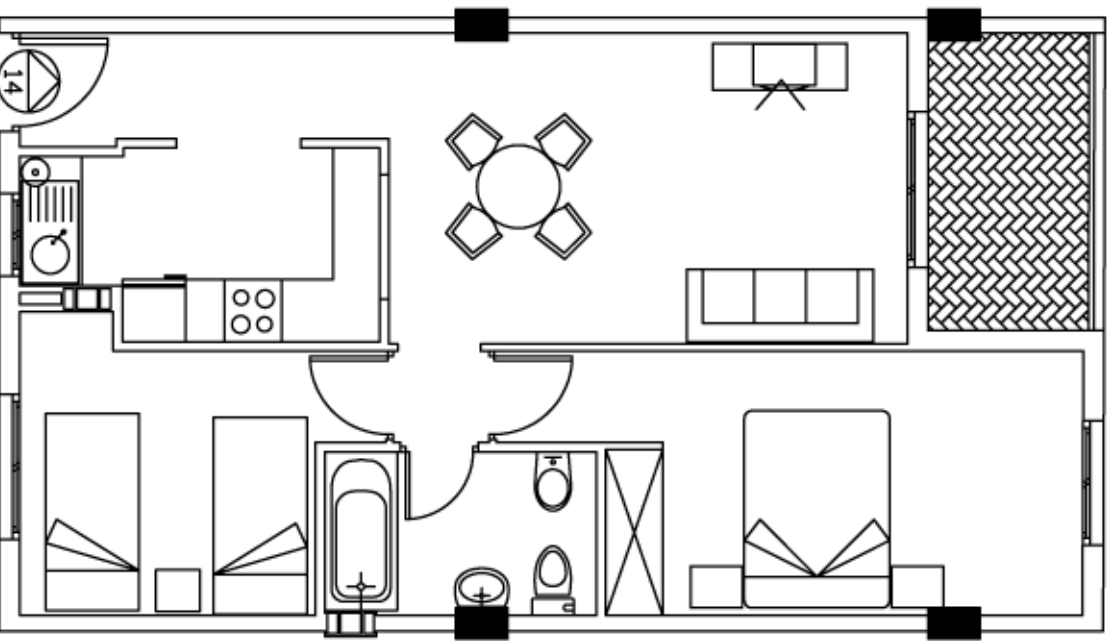
Residencial
Parque de las Avenidas III - Fase I



PLANTA TIPO
Vivienda n° 13

SUP. CONST + P. PROPORCIONAL	SUP. CONST TERRAZA	TOTAL
67,84 m ²	5,02 m ²	72,86 m ²

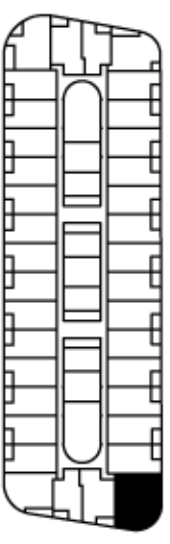
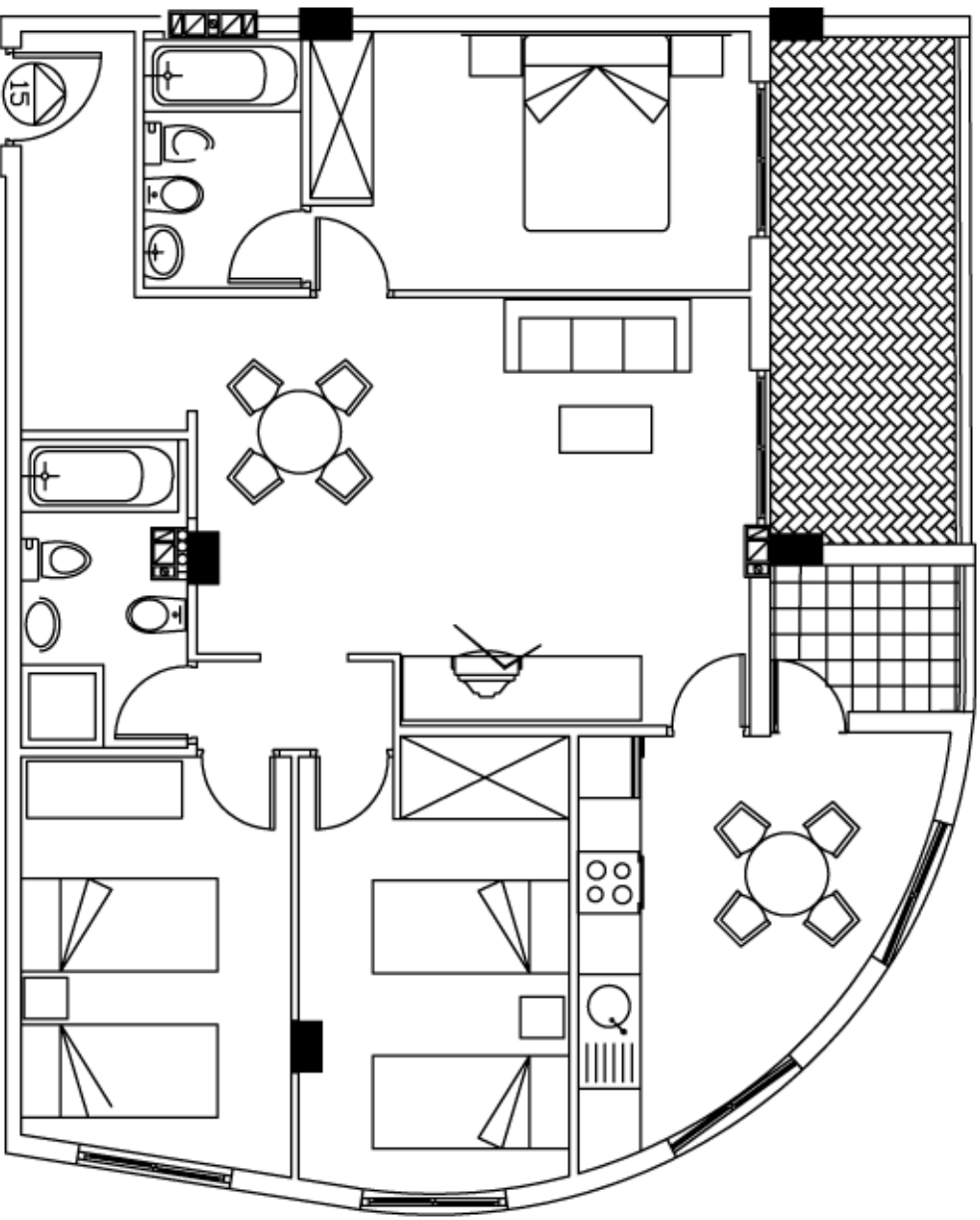
Residencial
Parque de las Avenidas III - Fase I



PLANTA TIPO
Vivienda n° 14

SUP. CONST + P. PROPORCIONAL	SUP. CONST TERRAZA	TOTAL
67,84 m ²	5,02 m ²	72,86 m ²

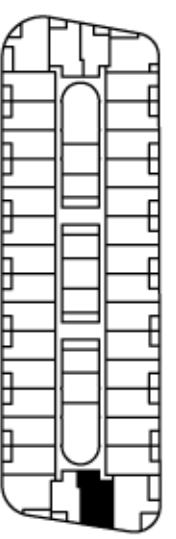
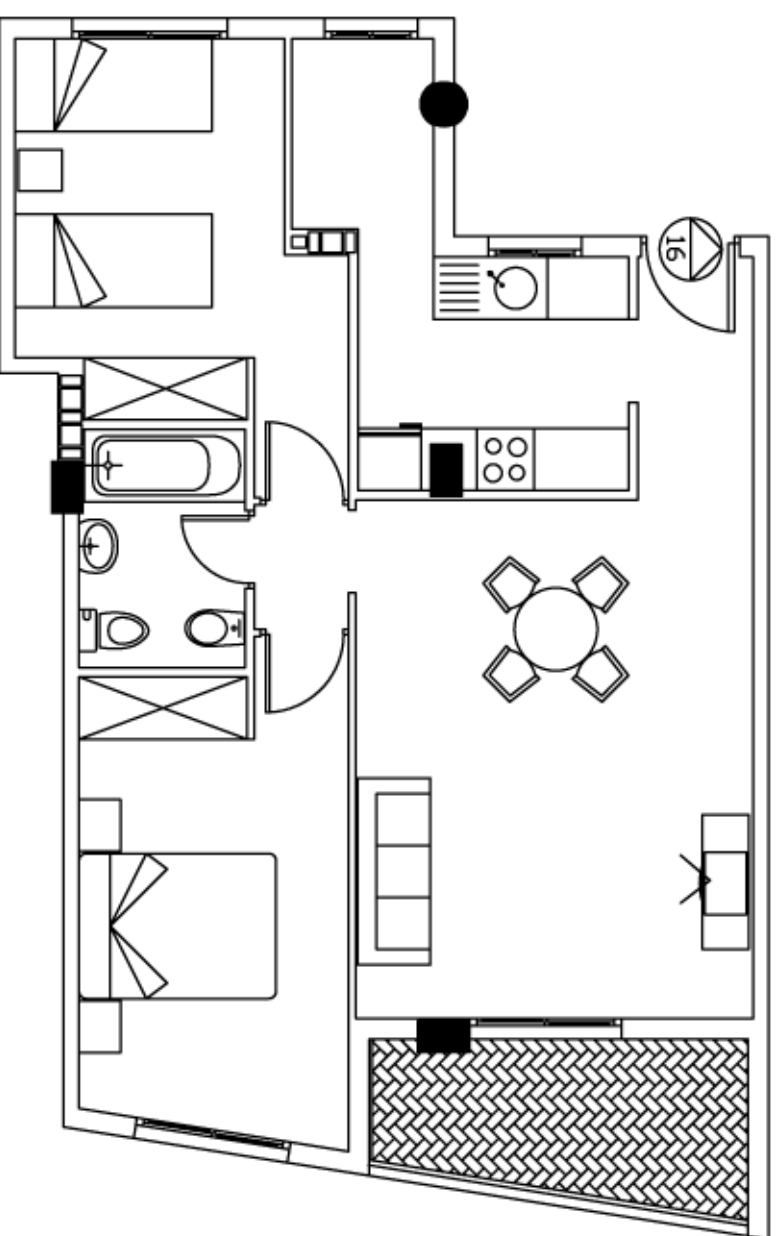
Residencial
Parque de las Avenidas III - Fase I



PLANTA TPO
Vivienda n° 15

SUP. CONST + P. PROPORCIONAL	SUP. CONST TERRAZA	TOTAL
105,00 m ²	12,45 m ²	117,45 m ²

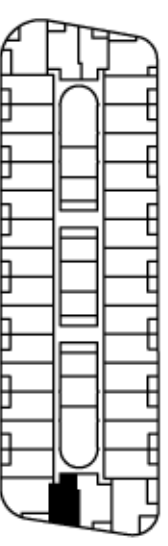
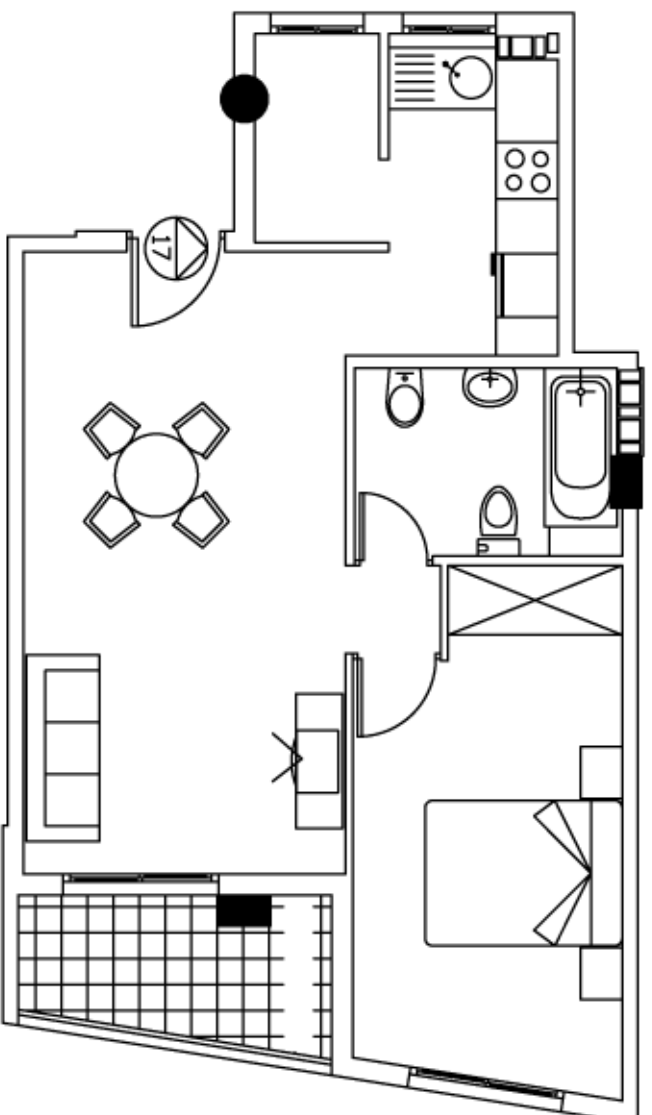
Residencial
Parque de las Avenidas III - Fase I



PLANTA TIPO
Vivienda n° 16

SUP. CONST + P. PROPORCIONAL	SUP. CONST TERRAZA	TOTAL
77,80m ²	6,08 m ²	83,88 m ²

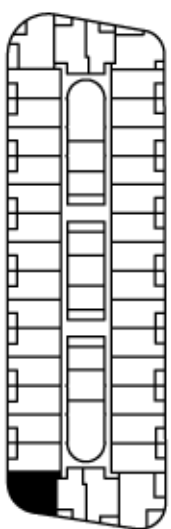
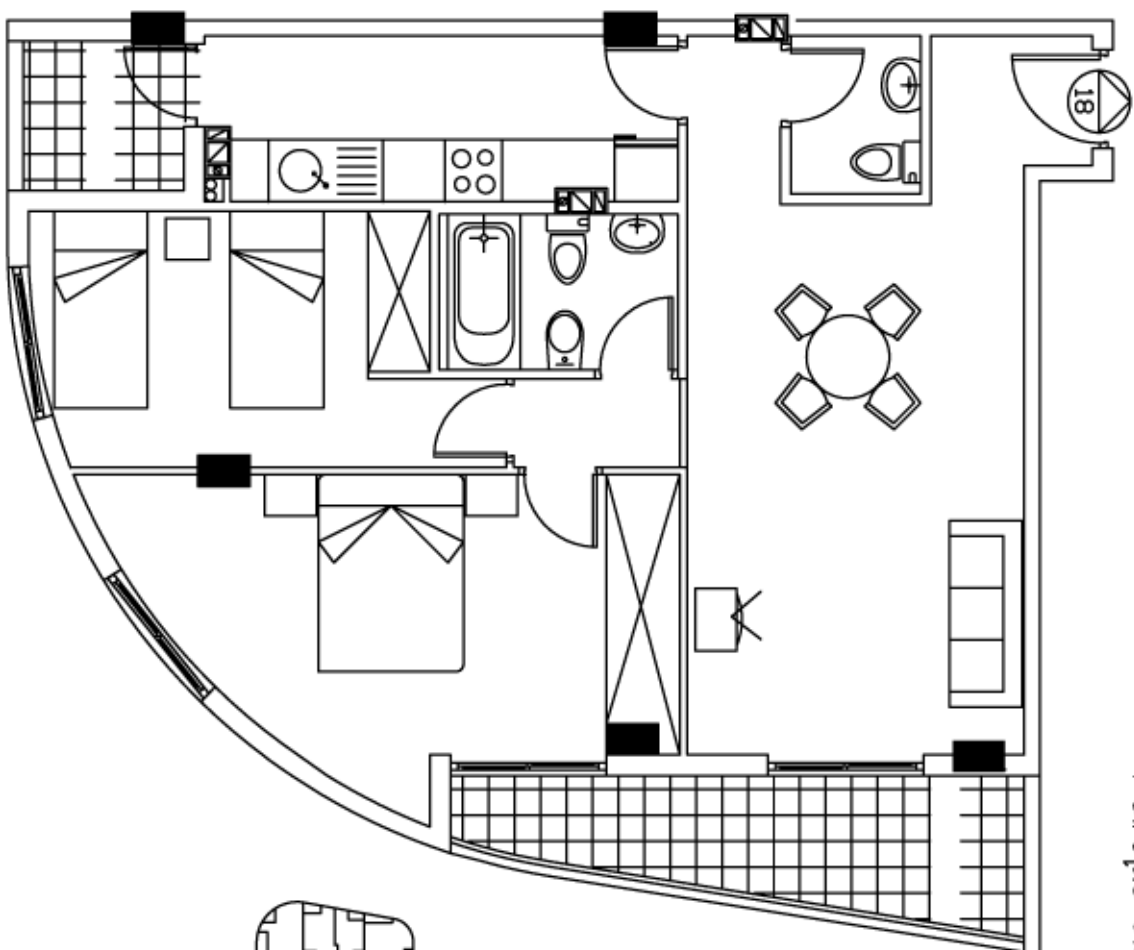
Residencial
Parque de las Avenidas III - Fase I



PLANTA TPO
Vivienda n° 17

SUP. CONST + P. PROPORCIONAL	SUP. CONST TERRAZA	TOTAL
59,49 m ²	4,63 m ²	64,12 m ²

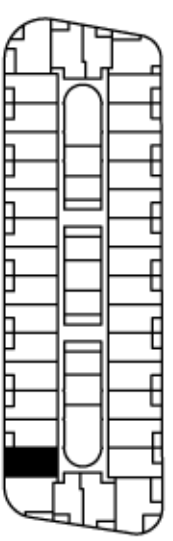
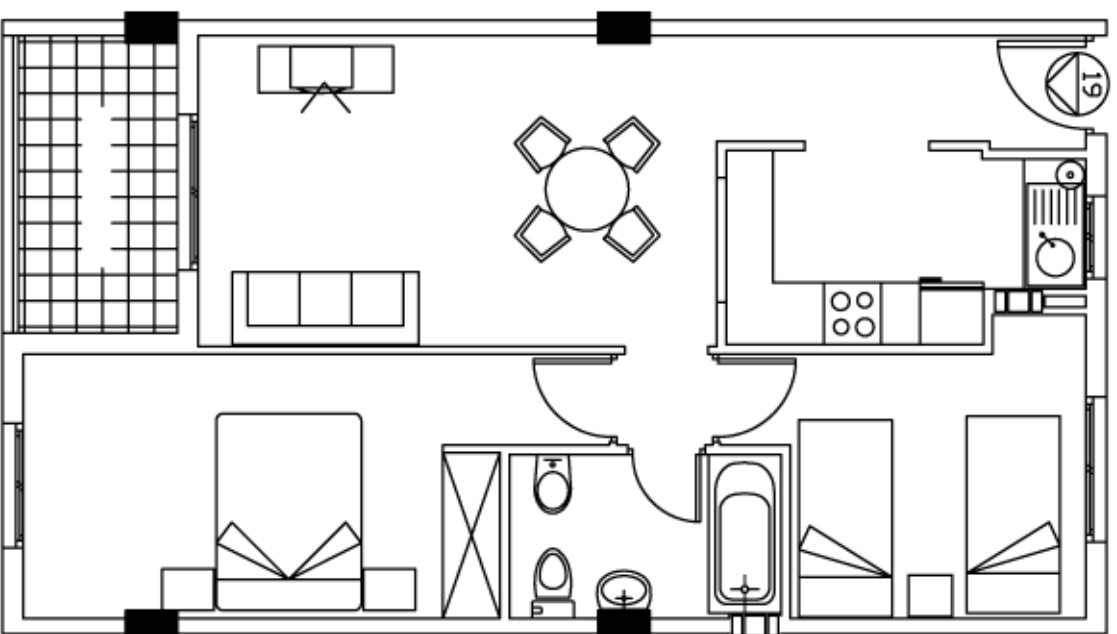
Residencial
Parque de las Avenidas III - Fase I



PLANTA TPO
Vivienda n° 18

SUP. CONST + P. PROPORCIONAL	SUP. CONST TERRAZA	TOTAL
79.13 m ²	7.05 m ²	86.18 m ²

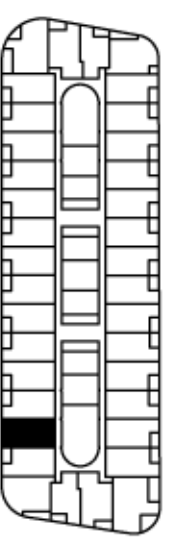
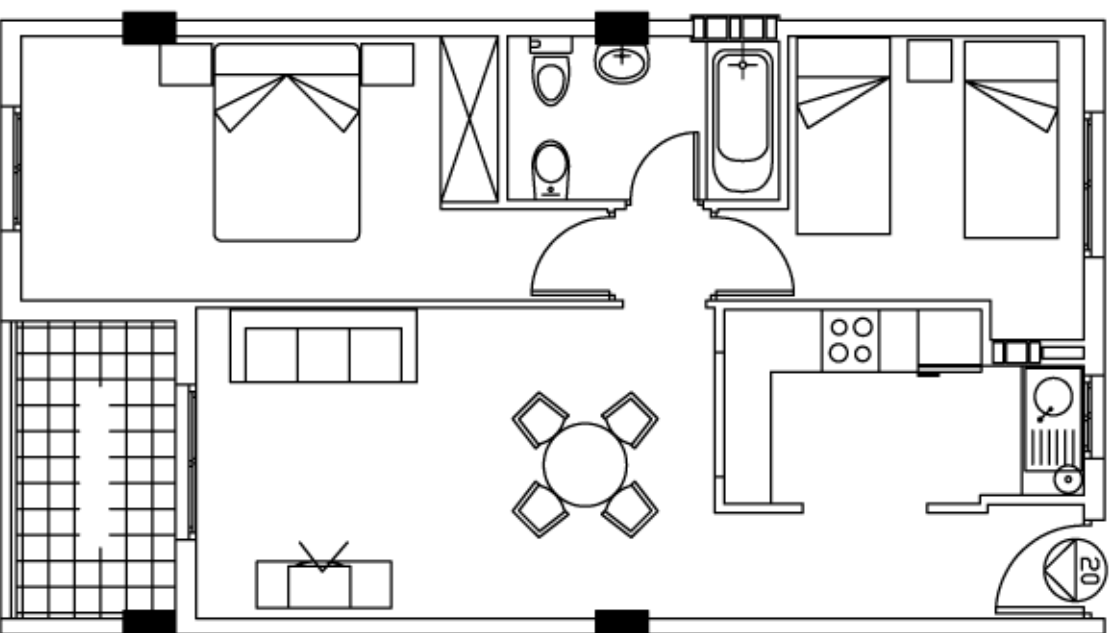
Residencial
Parque de las Avenidas III - Fase I



PLANTA TPO
Vivienda n° 19

SUP. CONST + P. PROPORCIONAL	SUP. CONST TERRAZA	TOTAL
67,84 m ²	5,02 m ²	72,86 m ²

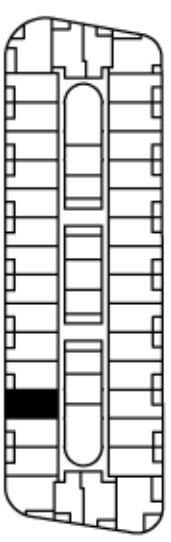
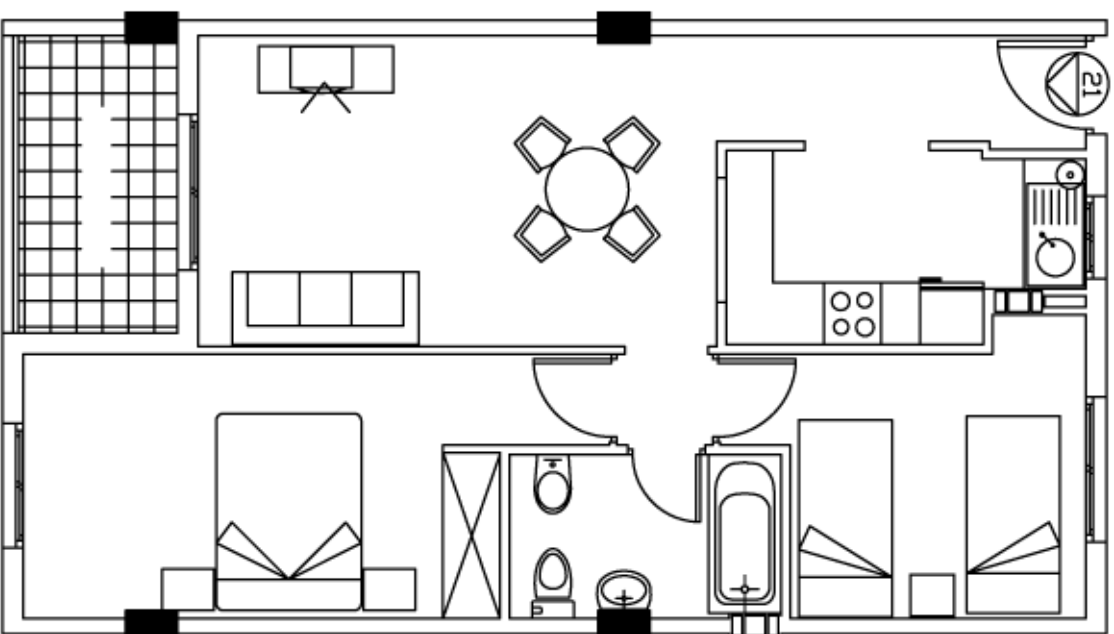
Residencial
Parque de las Avenidas III - Fase I



PLANTA TIPO
Vivienda n° 20

SUP. CONST + P. PROPORCIONAL	SUP. CONST TERRAZA	TOTAL
67,84 m ²	5,02 m ²	72,86 m ²

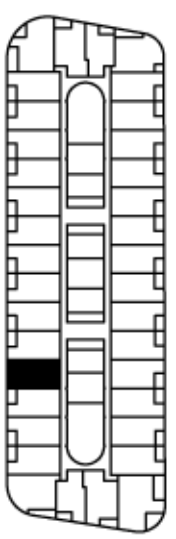
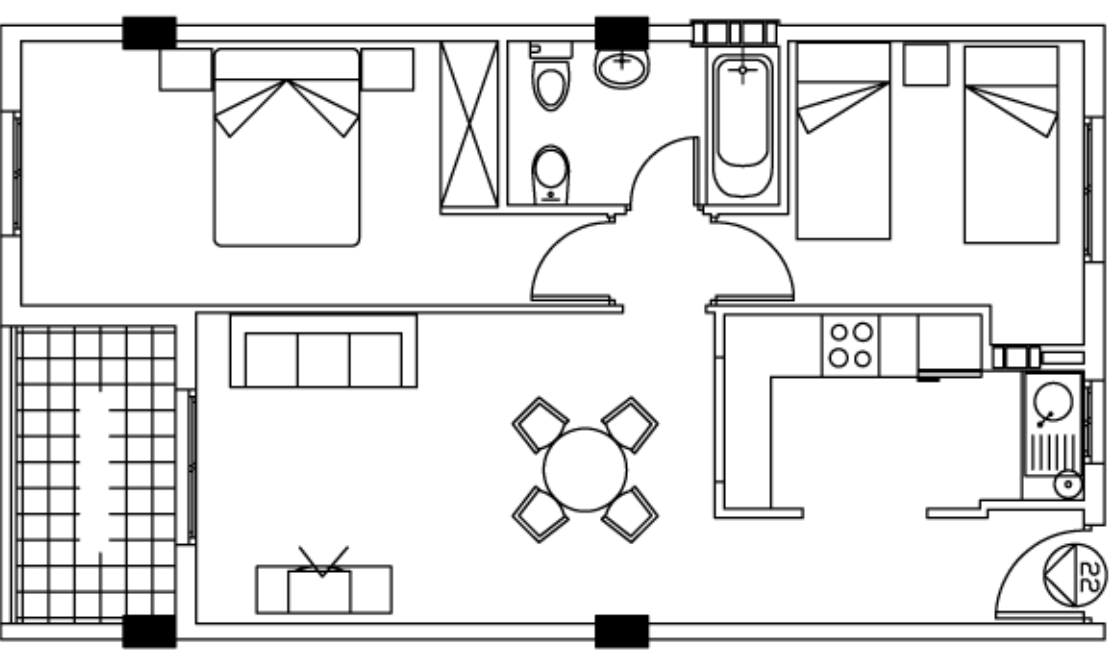
Residencial
Parque de las Avenidas III - Fase I



PLANTA TIPO
Vivienda n° 21

SUP. CONST + P. PROPORCIONAL	SUP. CONST TERRAZA	TOTAL
67,84 m ²	5,02 m ²	72,86 m ²

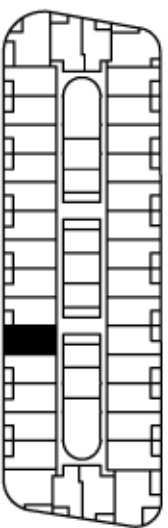
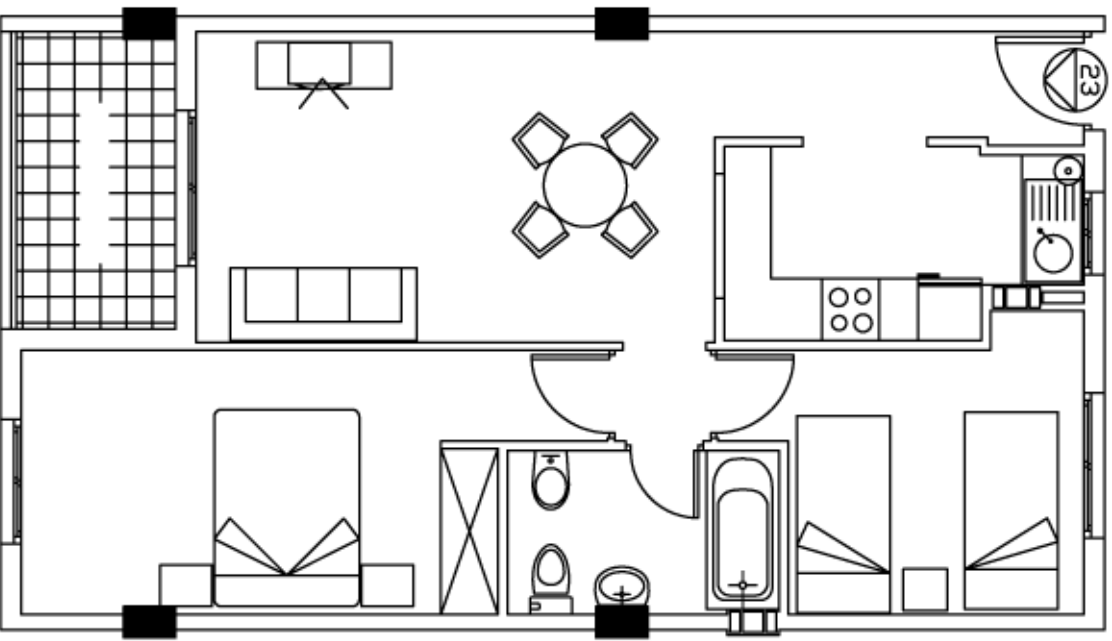
Residencial
Parque de las Avenidas III - Fase I



PLANTA TIPO
Vivienda n° 22

SUP. CONST + P. PROPORCIONAL	SUP. CONST TERRAZA	TOTAL
67,84 m ²	5,02 m ²	72,86 m ²

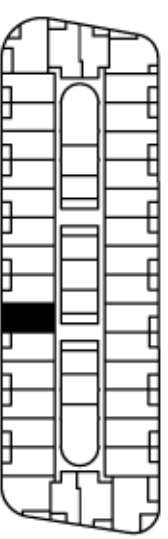
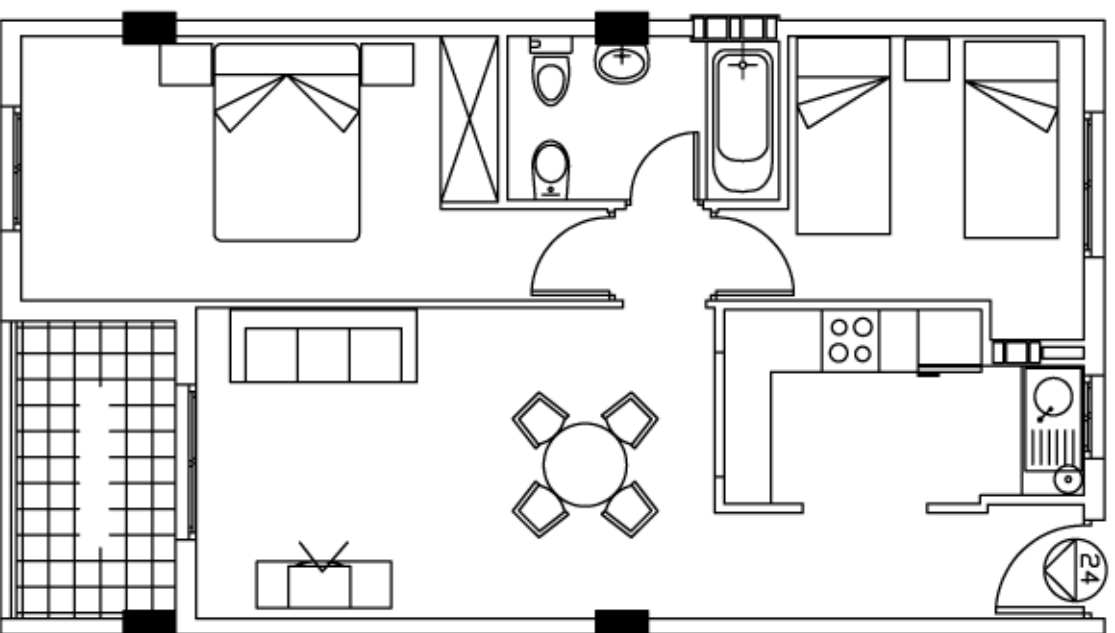
Residencial
Parque de las Avenidas III - Fase I



PLANTA TPO
Vivienda n° 23

SUP. CONST + P. PROPORCIONAL	SUP. CONST TERRAZA	TOTAL
67,84 m ²	5,02 m ²	72,86 m ²

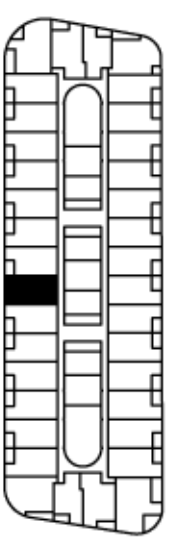
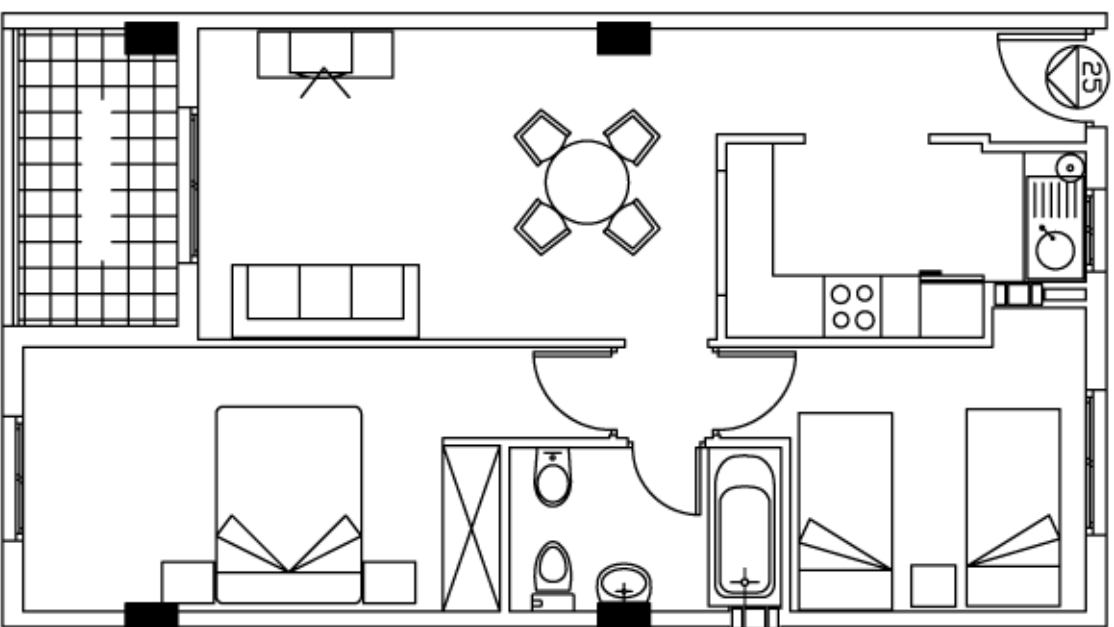
Residencial
Parque de las Avenidas III - Fase I



PLANTA TIPO
Vivienda n° 24

SUP. CONST + P. PROPORCIONAL	SUP. CONST TERRAZA	TOTAL
67,84 m ²	5,02 m ²	72,86 m ²

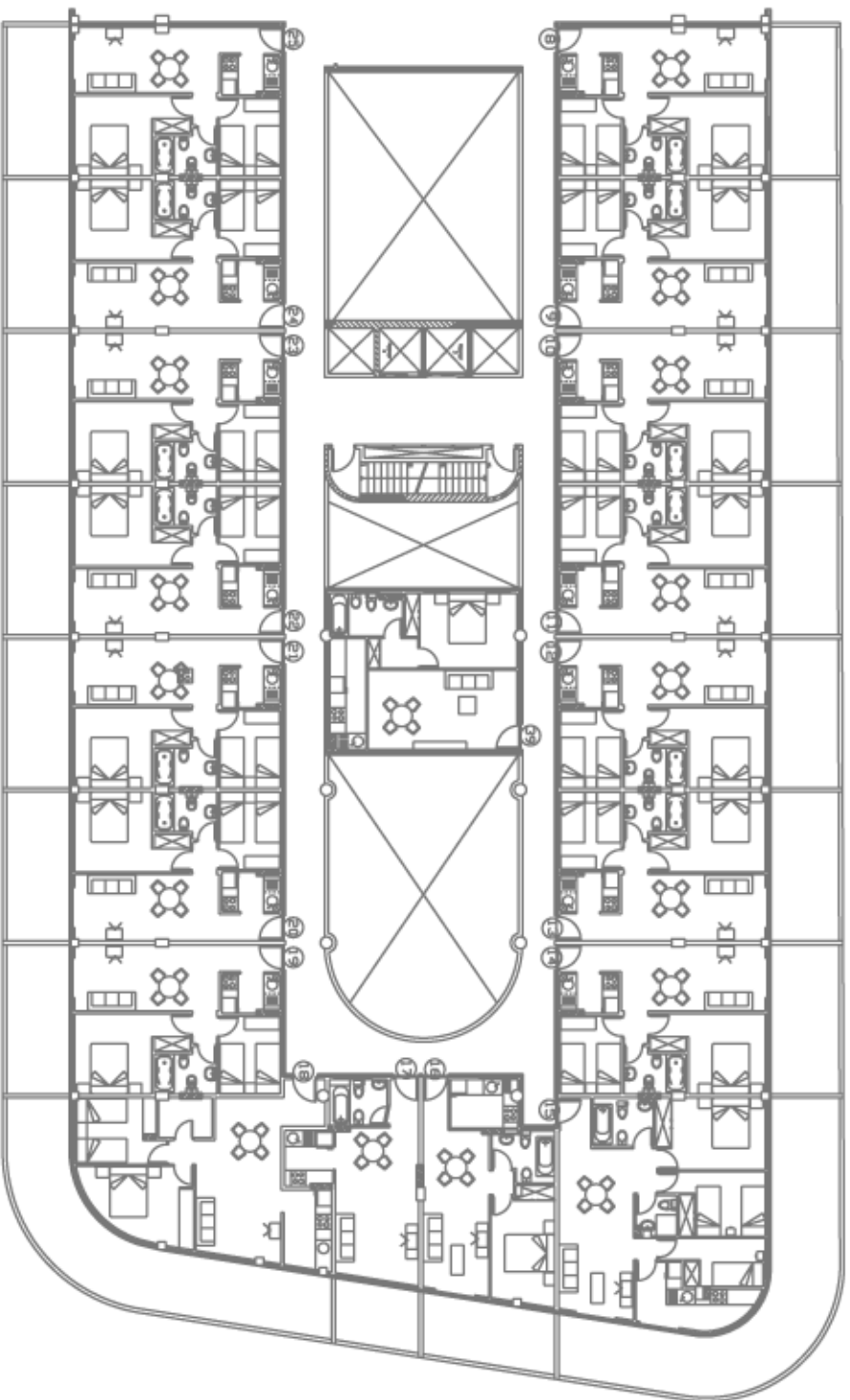
Residencial
Parque de las Avenidas III - Fase I



PLANTA TIPO
Vivienda n° 25

SUP. CONST + P. PROPORCIONAL	SUP. CONST TERRAZA	TOTAL
67,84 m ²	5,02 m ²	72,86 m ²

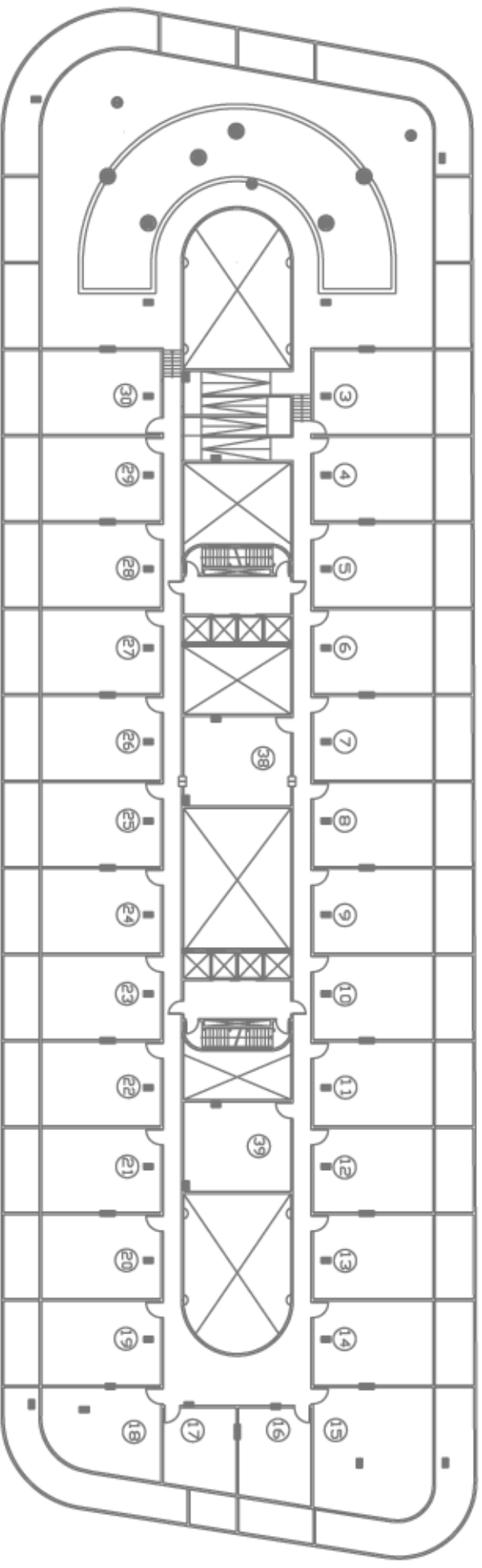
Residencial
Parque de las Avenidas III - Fase I



Planta Ático

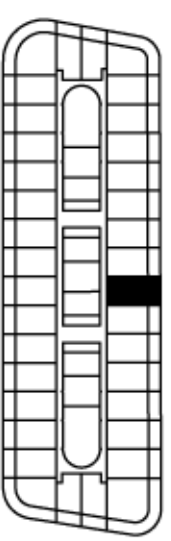
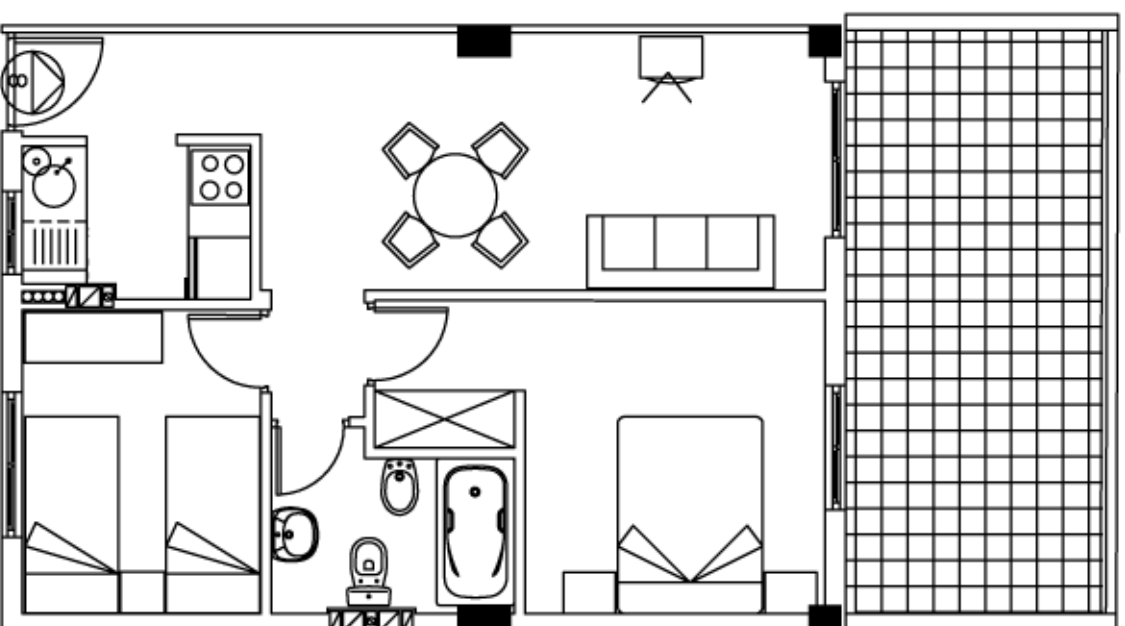
SUPERFICIES CONSTRUIDAS					
VIVIENDA	SOLARUM	VIVIENDA	SOLARUM	VIVIENDA	SOLARUM
3	47,83 m ²	13	47,83 m ²	23	47,83 m ²
4	47,83 m ²	14	47,83 m ²	24	47,83 m ²
5	47,83 m ²	15	70,50 m ²	25	47,83 m ²
6	47,83 m ²	16	32,36 m ²	26	47,83 m ²
7	47,83 m ²	17	28,68 m ²	27	47,83 m ²
8	47,83 m ²	18	46,65 m ²	28	47,83 m ²
9	47,83 m ²	19	47,83 m ²	29	47,83 m ²
10	47,83 m ²	20	47,83 m ²	30	47,83 m ²
11	47,83 m ²	21	47,83 m ²	38	46,92 m ²
12	47,83 m ²	22	47,83 m ²	39	46,92 m ²

Residencial Parque de las Avenidas III - Fase I



Planta Cubierta

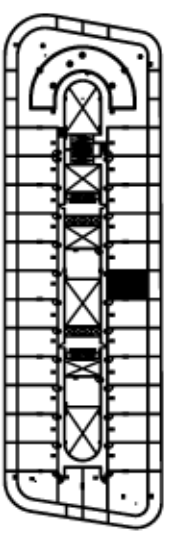
Residencial
Parque de las Avenidas III - Fase I



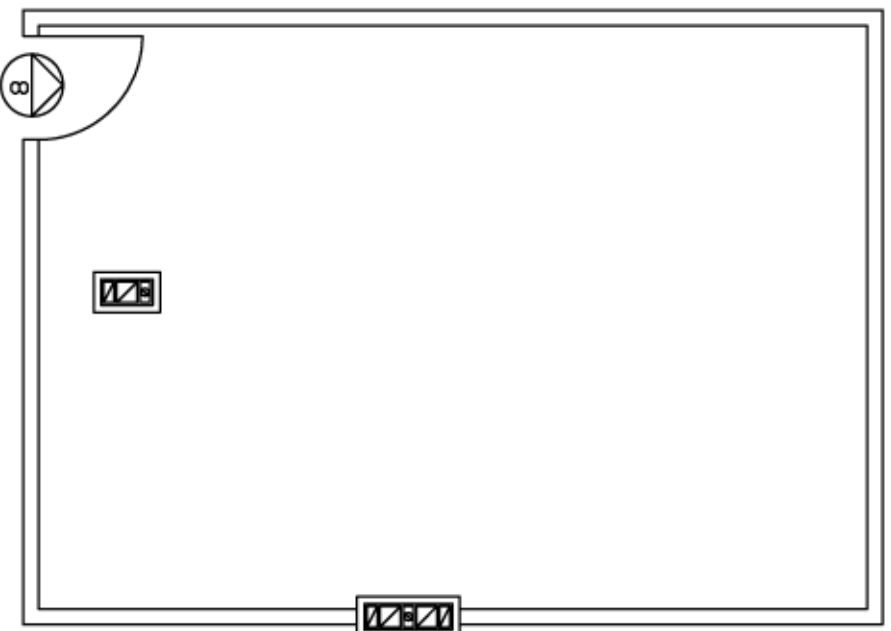
PLANTA ÁTICO
Vivienda n° 8

SUP. CONST + P. PROPORCIONAL	SUP. CONST TERRAZA	TOTAL
56.31 m ²	14.50 m ²	70.81 m ²

Residencial
Parque de las Avenidas III - Fase I

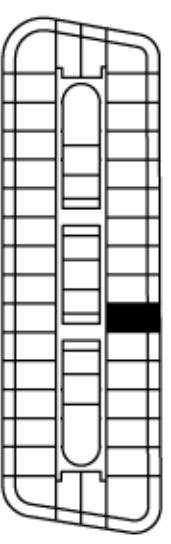
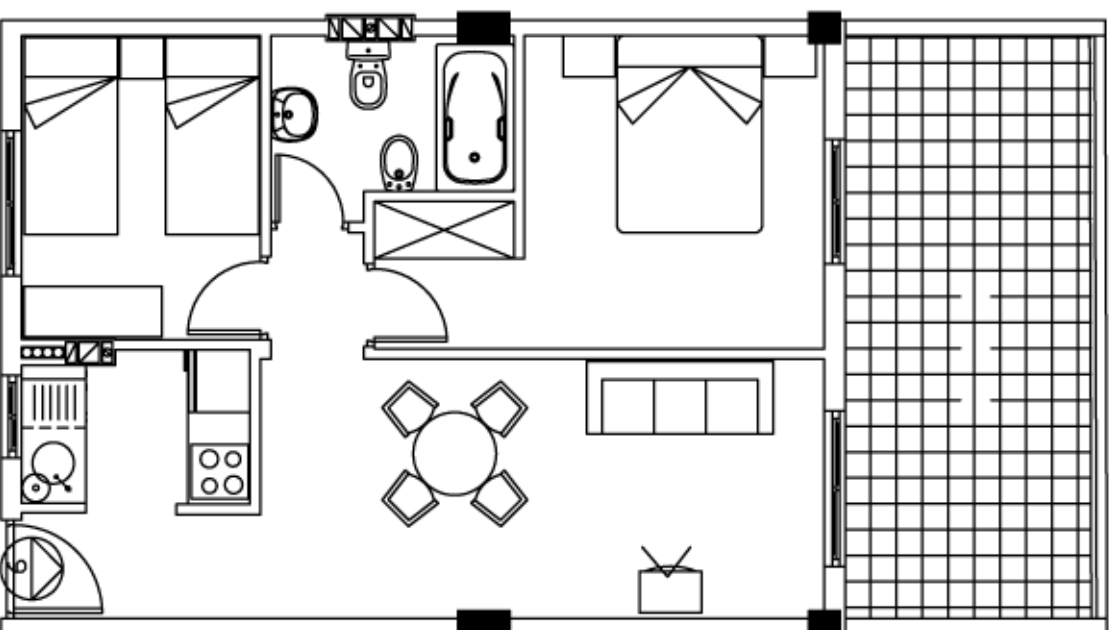


PLANTA CUBIERTA
Vivenda n° 8



SOLARIUM
SUP.CONSTI: 47.83 M2

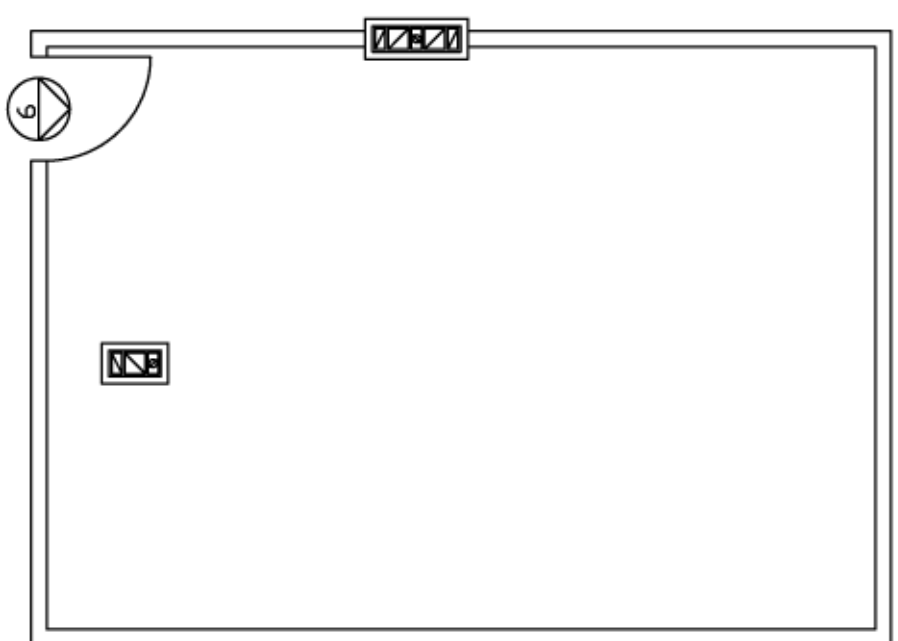
Residencial
Parque de las Avenidas III - Fase I



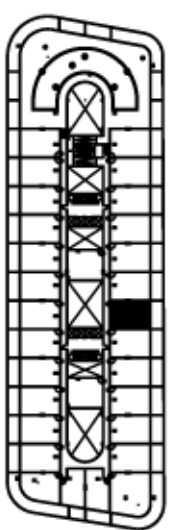
PLANTA ÁTICO
Vivienda n° 9

SUP. CONST + P. PROPORCIONAL	SUP. CONST TERRAZA	TOTAL
56.31 m ²	14.50 m ²	70.81 m ²

Residencial
Parque de las Avenidas III - Fase I

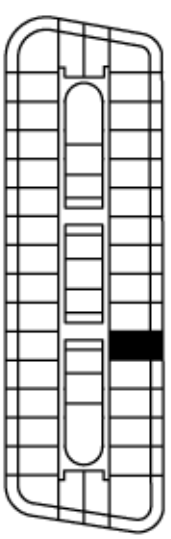
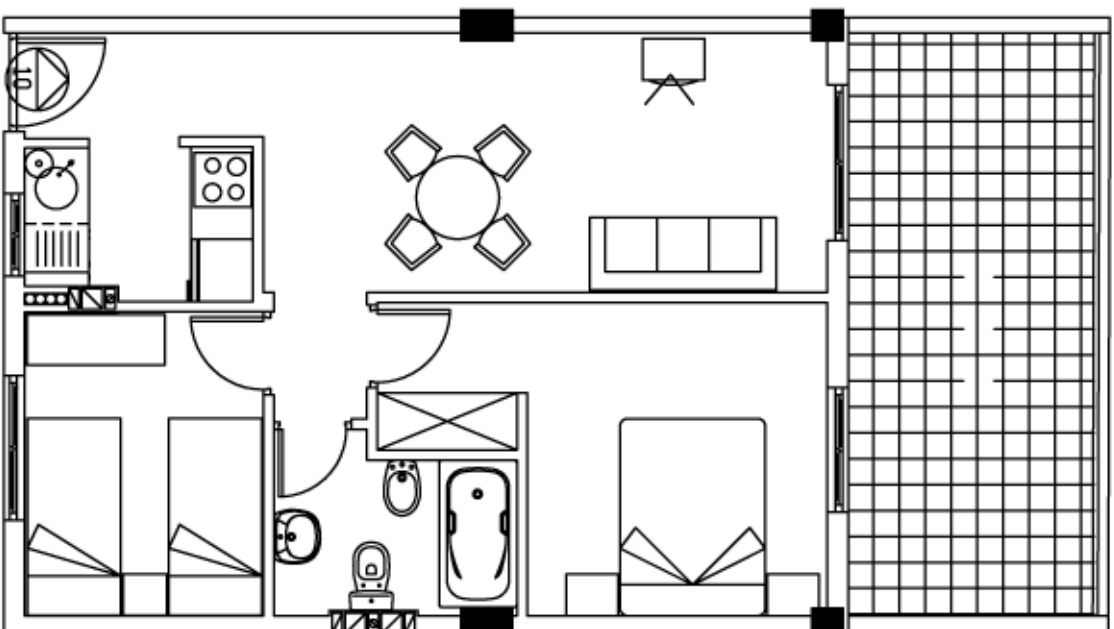


SOLARIUM
SUP.CONSTI: 47.83 M2



PLANTA CUBIERTA
Vivienda n° 9

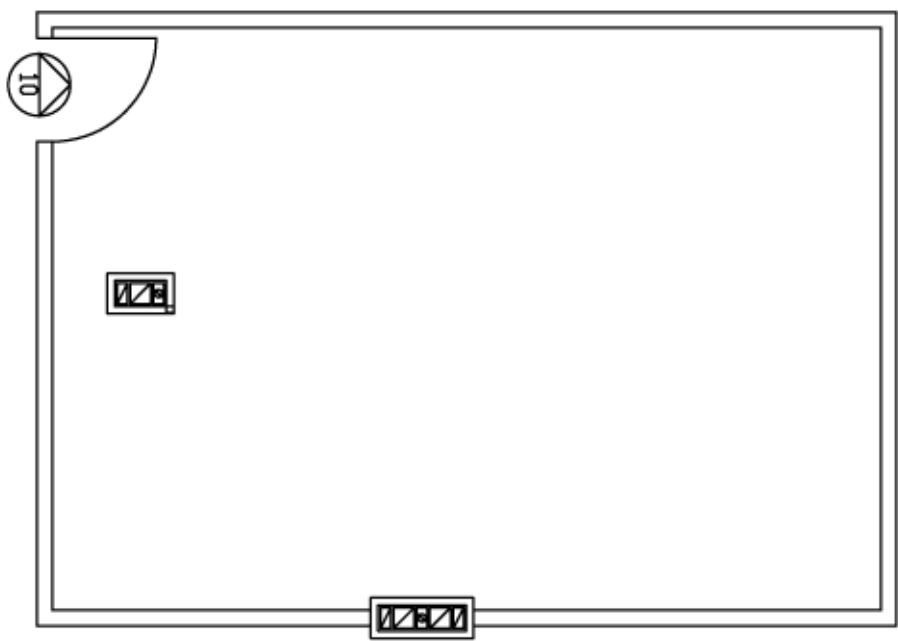
Residencial
Parque de las Avenidas III - Fase I



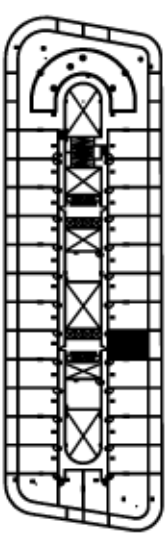
PLANTA ÁTICO
Vivienda n° 10

SUP. CONST + P. PROPORCIONAL	SUP. CONST TERRAZA	TOTAL
56.31 m ²	14.50 m ²	70.81 m ²

Residencial
Parque de las Avenidas III - Fase I

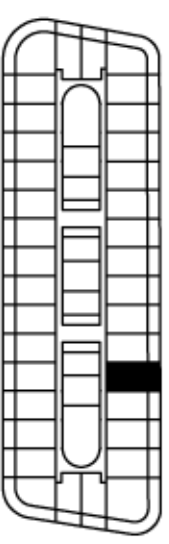
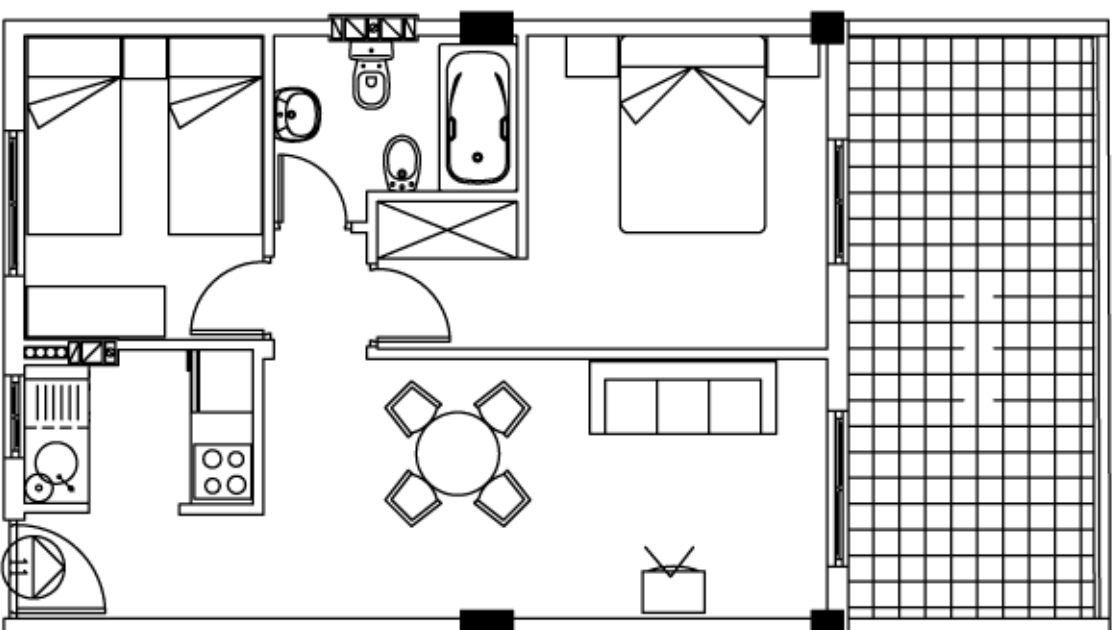


SOLARIUM
SUP.CONSTI: 47.83 M2



PLANTA CUBIERTA
Vivienda n° 10

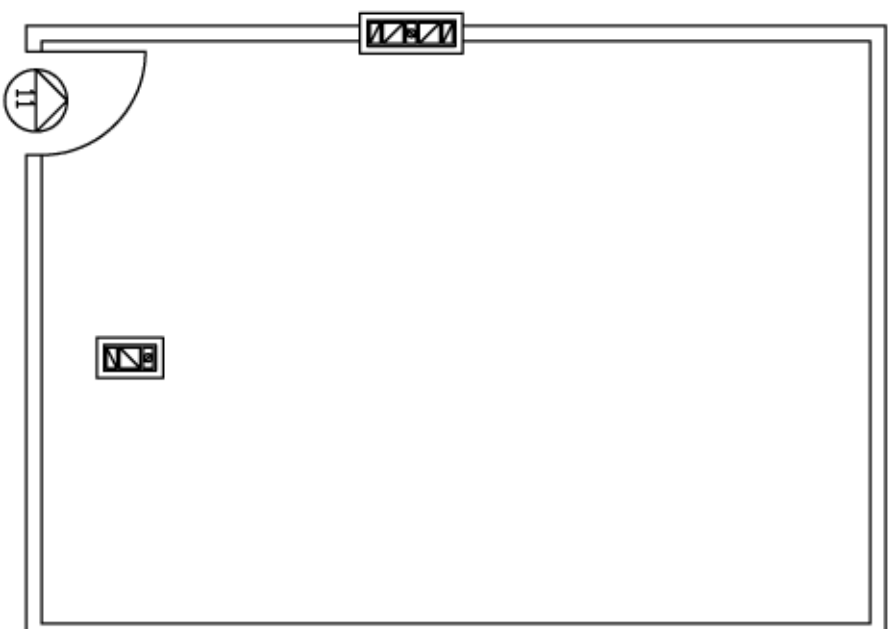
Residencial
Parque de las Avenidas III - Fase I



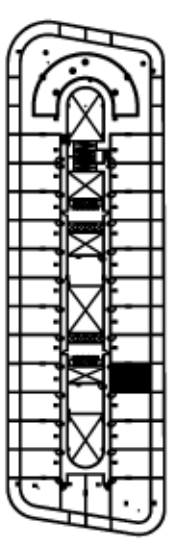
PLANTA ÁTICO
Vivienda n° II

SUP. CONST + P. PROPORCIONAL	SUP. CONST TERRAZA	TOTAL
56.31 m ²	14.50 m ²	70.81 m ²

Residencial
Parque de las Avenidas III - Fase I

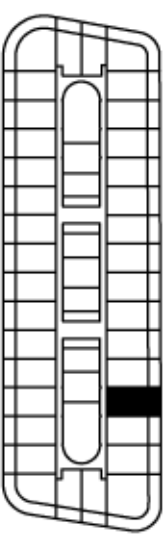
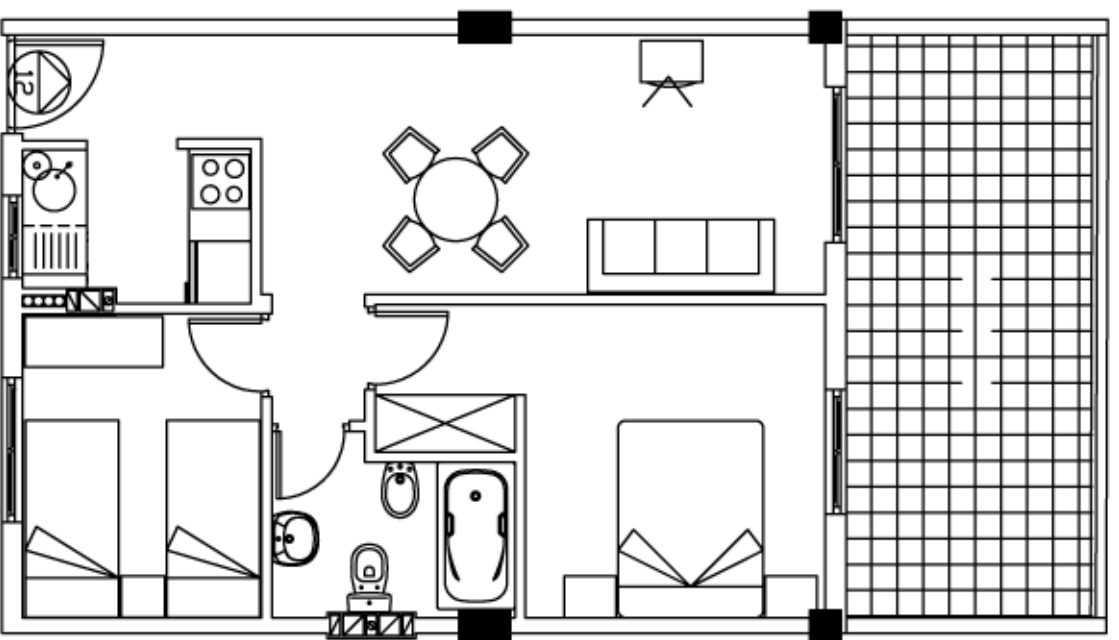


SOLARIUM
SUP.CONSTI: 47.83 M2



PLANTA CUBIERTA
Vivenda n° II

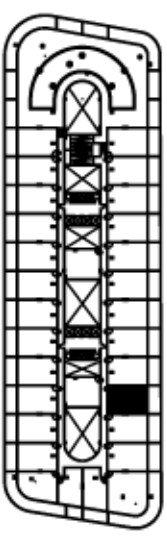
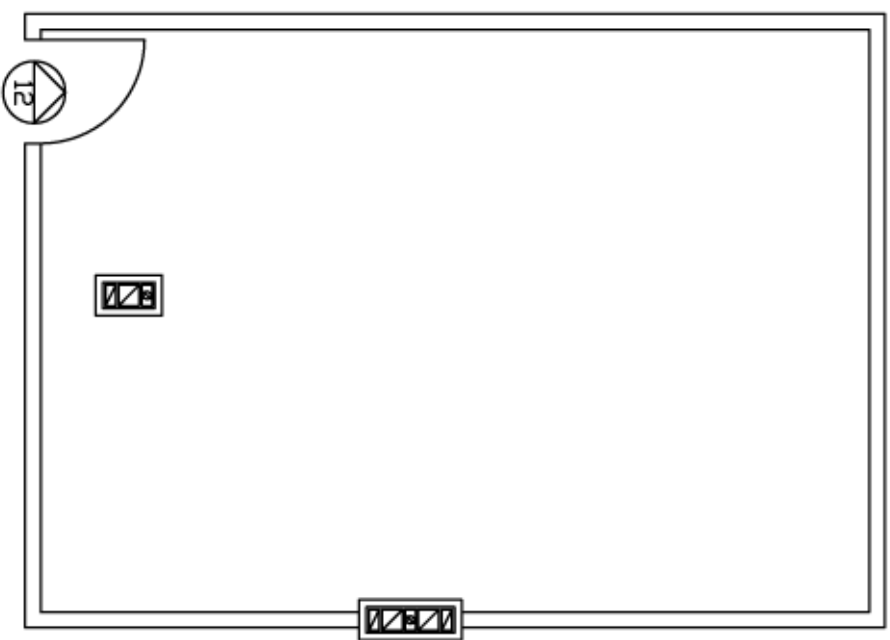
Residencial
Parque de las Avenidas III - Fase I



PLANTA ÁTICO
Vivienda n° 12

SUP. CONST + P. PROPORCIONAL	SUP. CONST TERRAZA	TOTAL
56.31 m ²	14.50 m ²	70.81 m ²

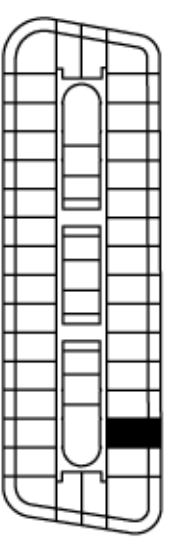
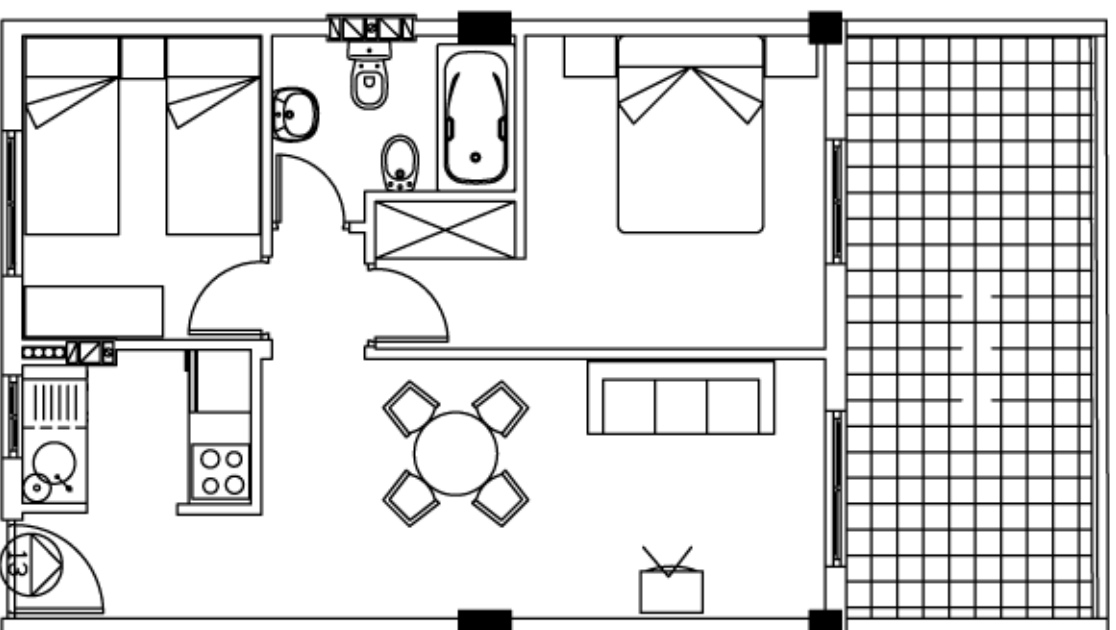
Residencial
Parque de las Avenidas III - Fase I



PLANTA CUBIERTA
Vivienda n° 12

SOLARIUM
SUP.CONSTI: 47.83 M2

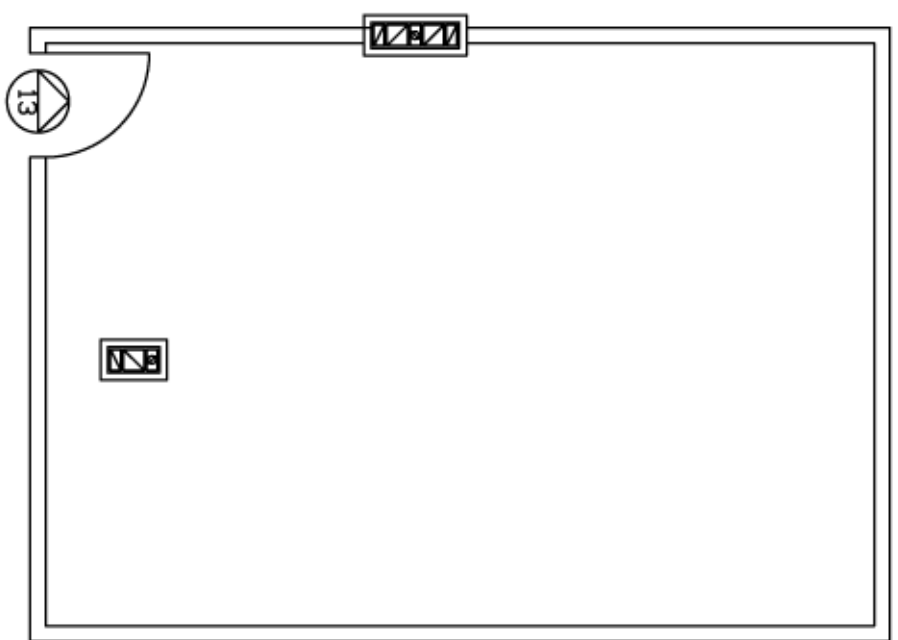
Residencial
Parque de las Avenidas III - Fase I



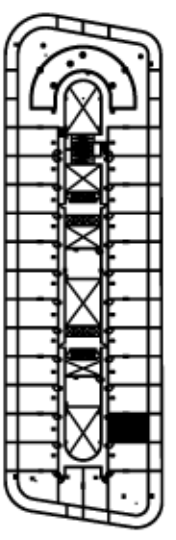
PLANTA ÁTICO
Vivienda n° 13

SUP. CONST + P. PROPORCIONAL	SUP. CONST TERRAZA	TOTAL
56.31 m ²	14.50 m ²	70.81 m ²

Residencial
Parque de las Avenidas III - Fase I

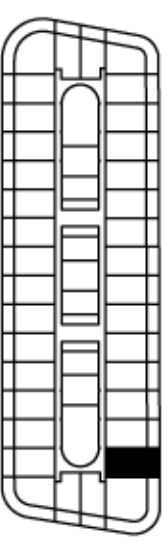
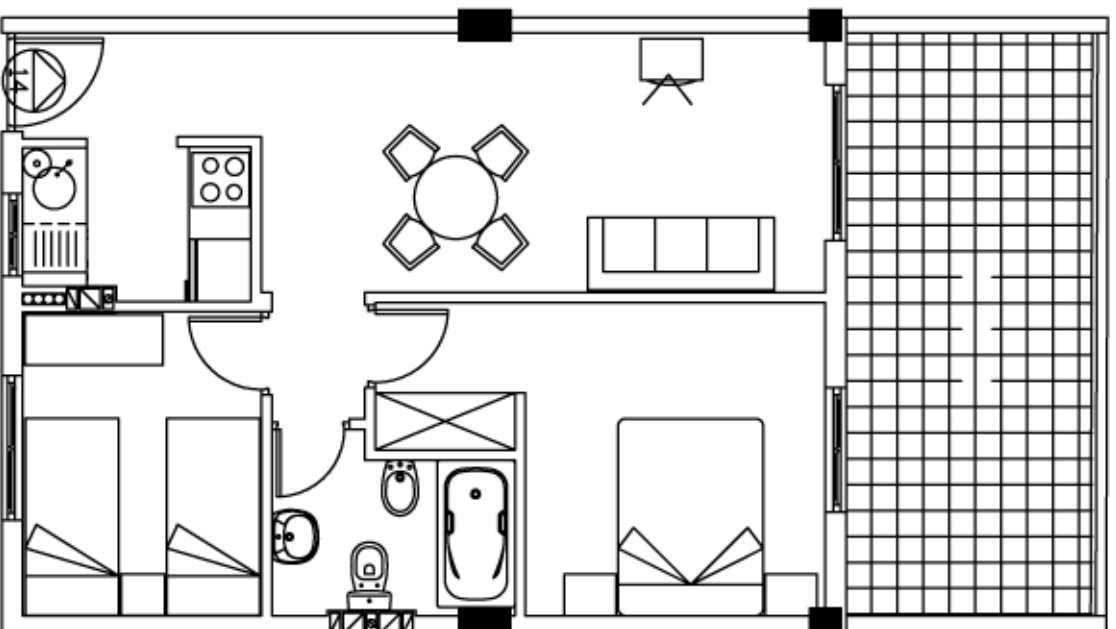


SOLARIUM
SUP.CONSTI: 47.83 M2



PLANTA CUBIERTA
Vivenda n° 13

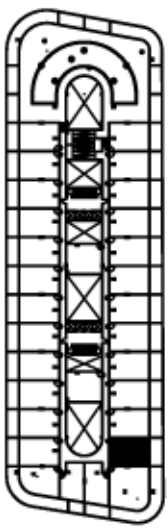
Residencial
Parque de las Avenidas III - Fase I



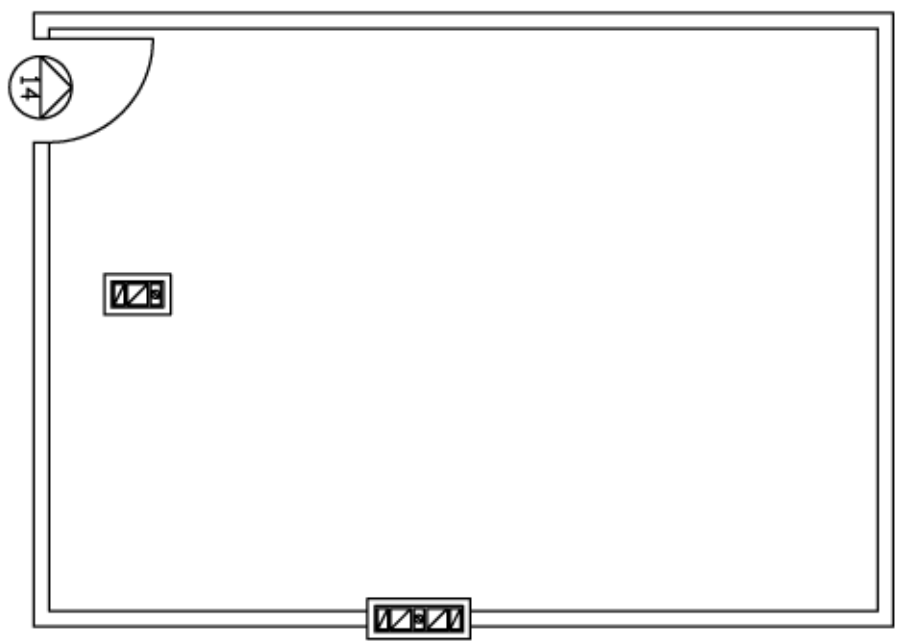
PLANTA ÁTICO
Vivienda n° 14

SUP. CONST + P. PROPORCIONAL	SUP. CONST TERRAZA	TOTAL
56.31 m ²	14.50 m ²	70.81 m ²

Residencial
Parque de las Avenidas III - Fase I

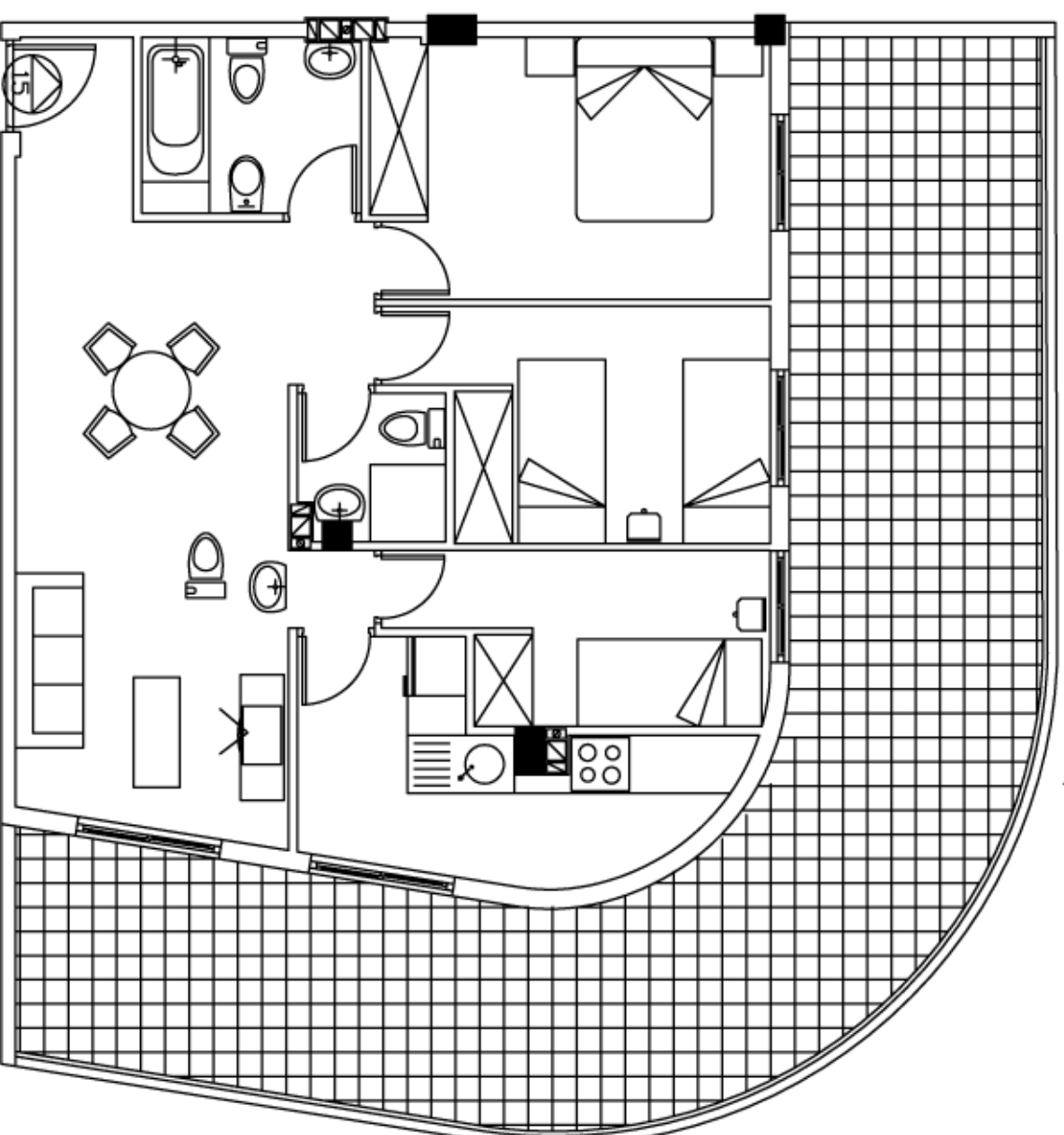


PLANTA CUBIERTA
Vivenda n° 14

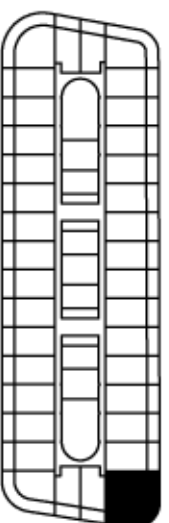


SOLARIUM
SUP.CONSTI: 47.83 M2

Residencial
Parque de las Avenidas III - Fase I

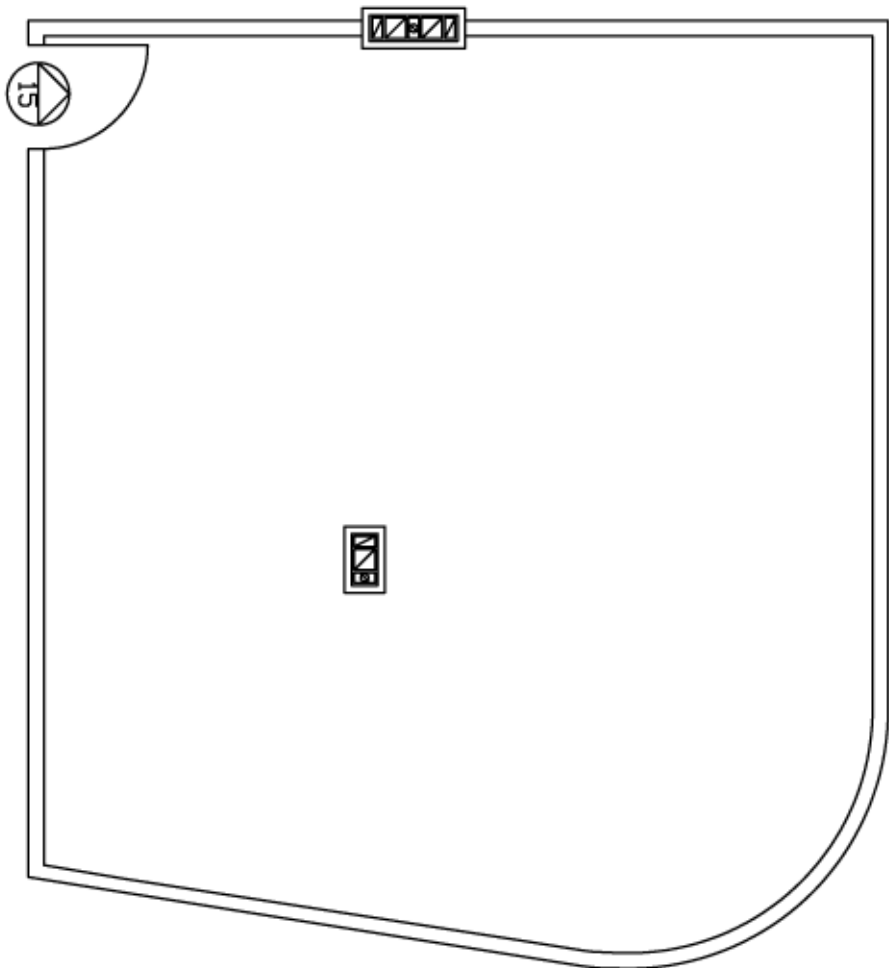


PLANTA ÁTICO
Vivienda n° 15

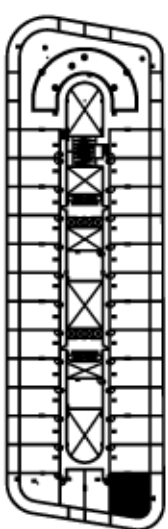


SUP. CONST + P. PROPORCIONAL	SUP. CONST TERRAZA	TOTAL
85,13 m ²	45,85 m ²	130,98 m ²

Residencial
Parque de las Avenidas III - Fase I

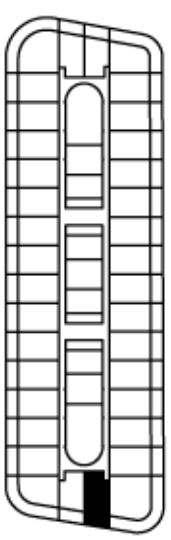
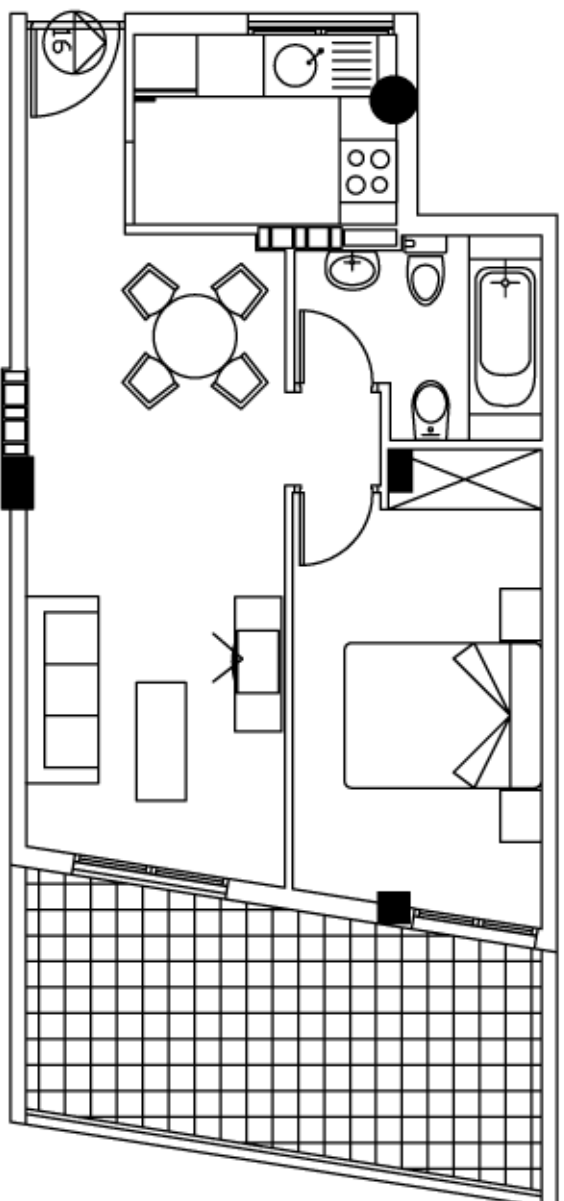


SOLARIUM
SUP.CONSTI: 70.90 M2



PLANTA CUBIERTA
Vivienda n° 15

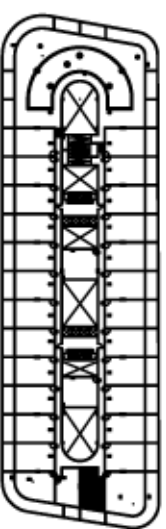
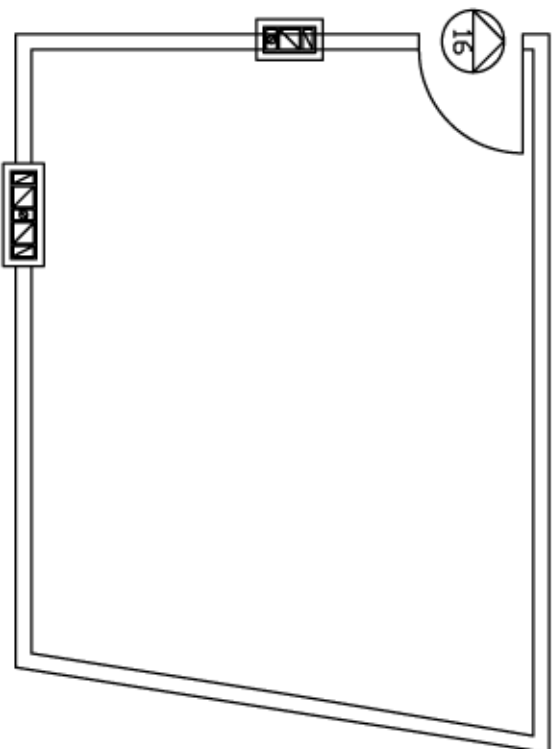
Residencial
Parque de las Avenidas III - Fase I



PLANTA ÁTICO
Vivienda n° 16

SUP. CONST + P. PROPORCIONAL	SUP. CONST TERRAZA	TOTAL
50,75 m ²	12,75 m ²	63,50 m ²

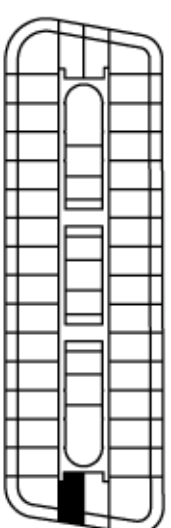
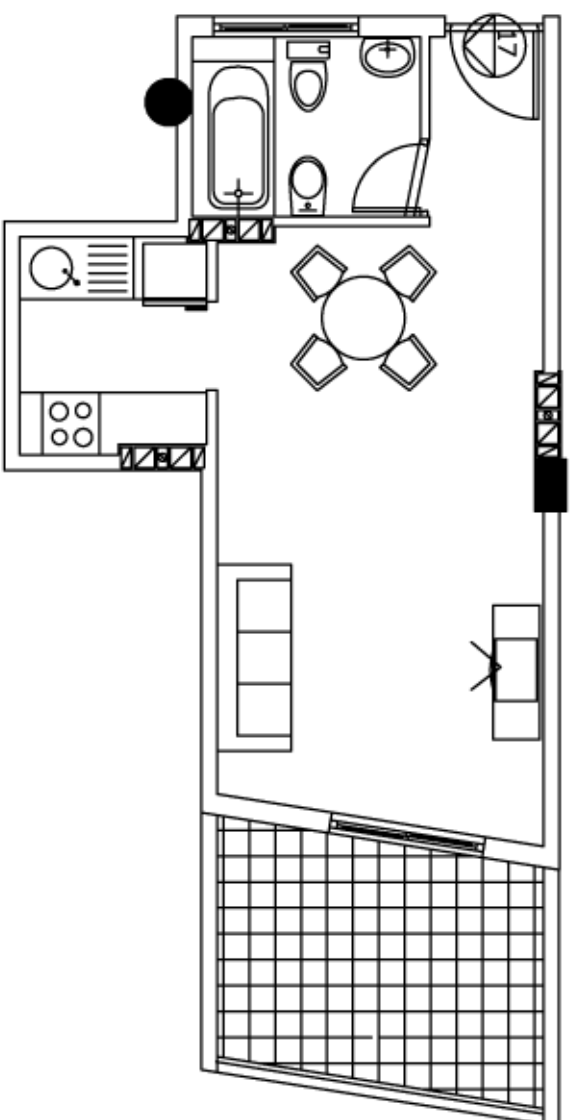
Residencial
Parque de las Avenidas III - Fase I



PLANTA CUBIERTA
Vivienda n° 16

SOLARIUM
SUP.CONSTI: 32.56 M2

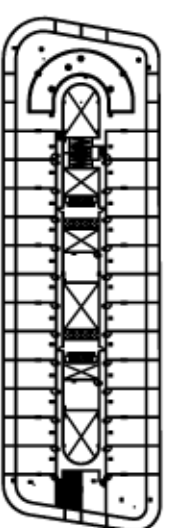
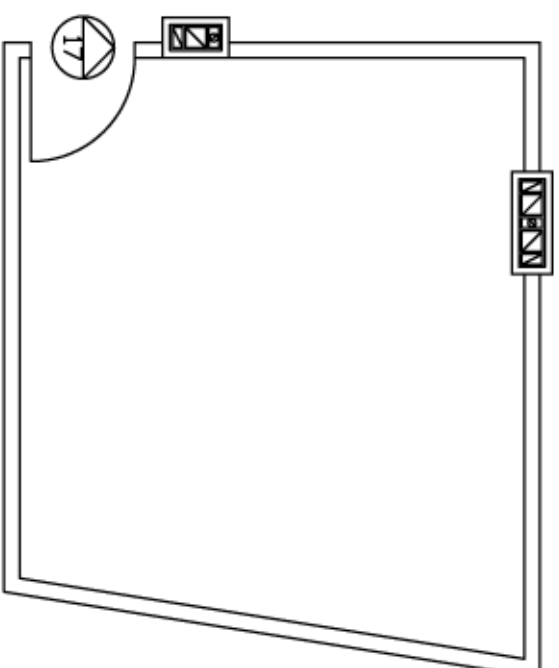
Residencial
Parque de las Avenidas III - Fase I



PLANTA ÁTICO
Vivienda n° 17

SUP. CONST + P. PROPORCIONAL	SUP. CONST TERRAZA	TOTAL
37,40 m ²	8,20 m ²	45,60 m ²

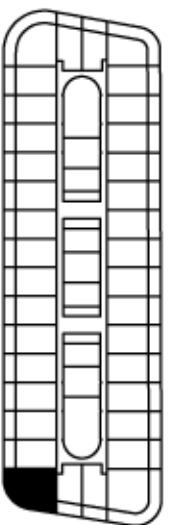
Residencial
Parque de las Avenidas III - Fase I



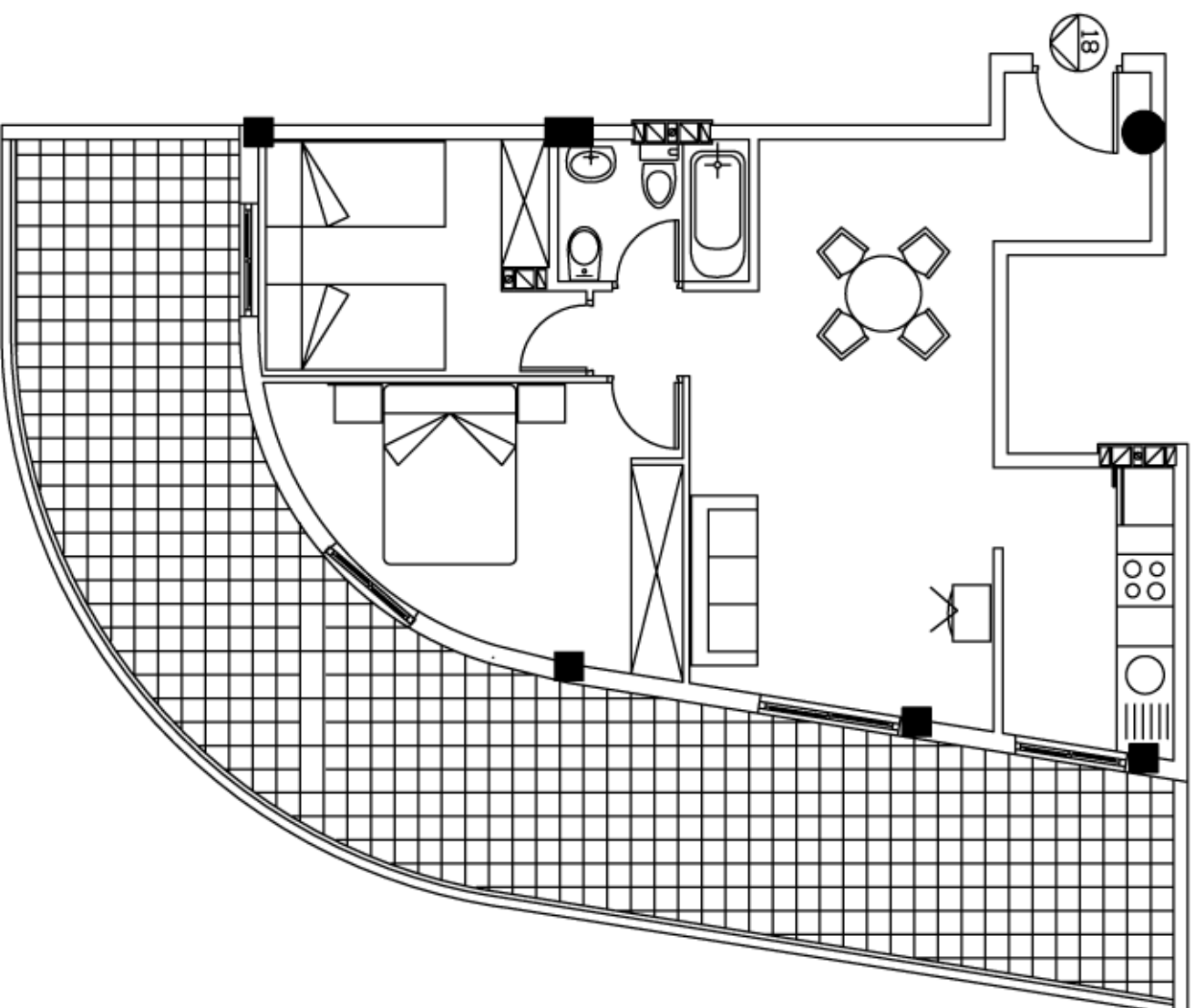
PLANTA CUBIERTA
Vivienda n° 17

SOLARIUM
SUP.CONSTI: 28.68 M2

Residencial
Parque de las Avenidas III - Fase I

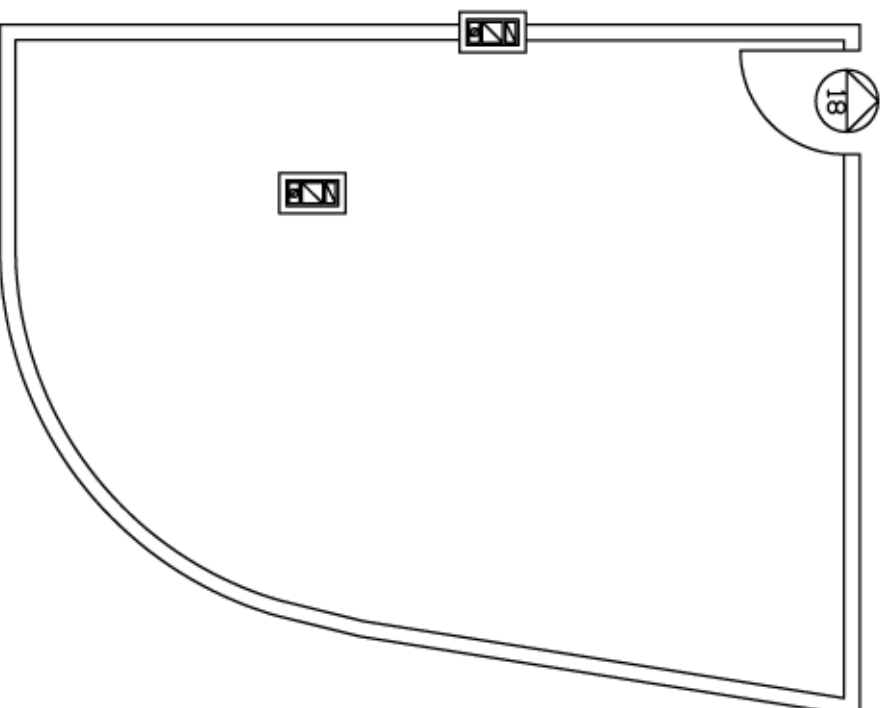


PLANTA ÁTICO
Vivienda n° 18

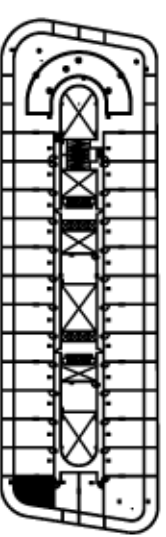


SUP. CONST + P. PROPORCIONAL	SUP. CONST TERRAZA	TOTAL
65.92 m ²	40.20 m ²	106.12 m ²

Residencial
Parque de las Avenidas III - Fase I

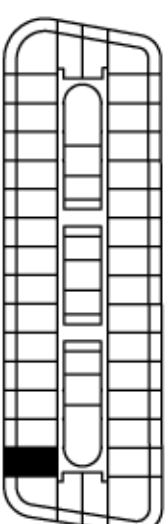
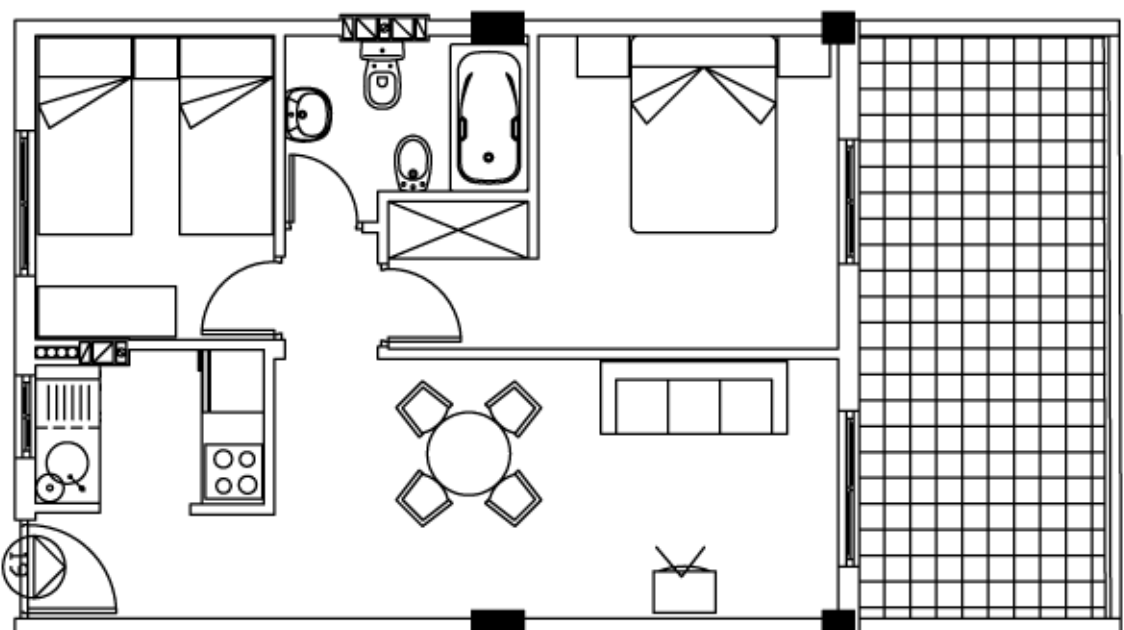


SOLARIUM
SUP.CONSTI: 46.65 M2



PLANTA CUBIERTA
Vivienda n° 18

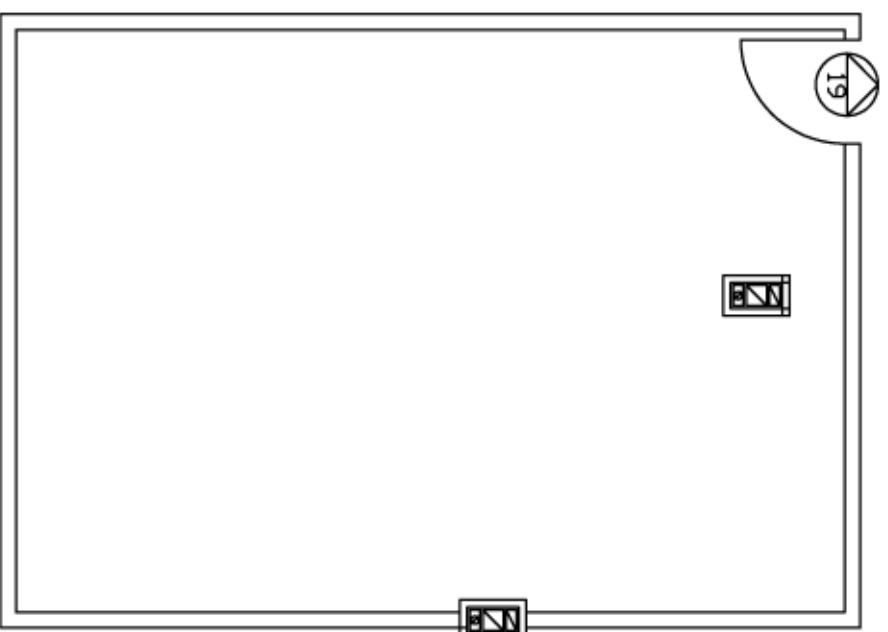
Residencial
Parque de las Avenidas III - Fase I



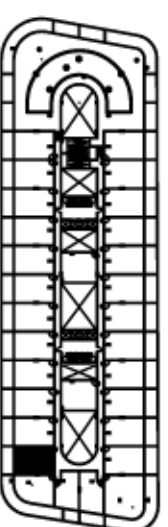
PLANTA ÁTICO
Vivienda n° 19

SUP. CONST + P. PROPORCIONAL	SUP. CONST TERRAZA	TOTAL
56.31 m ²	14.50 m ²	70.81 m ²

Residencial
Parque de las Avenidas III - Fase I

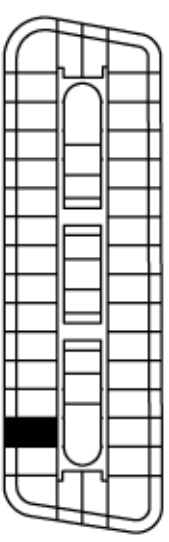
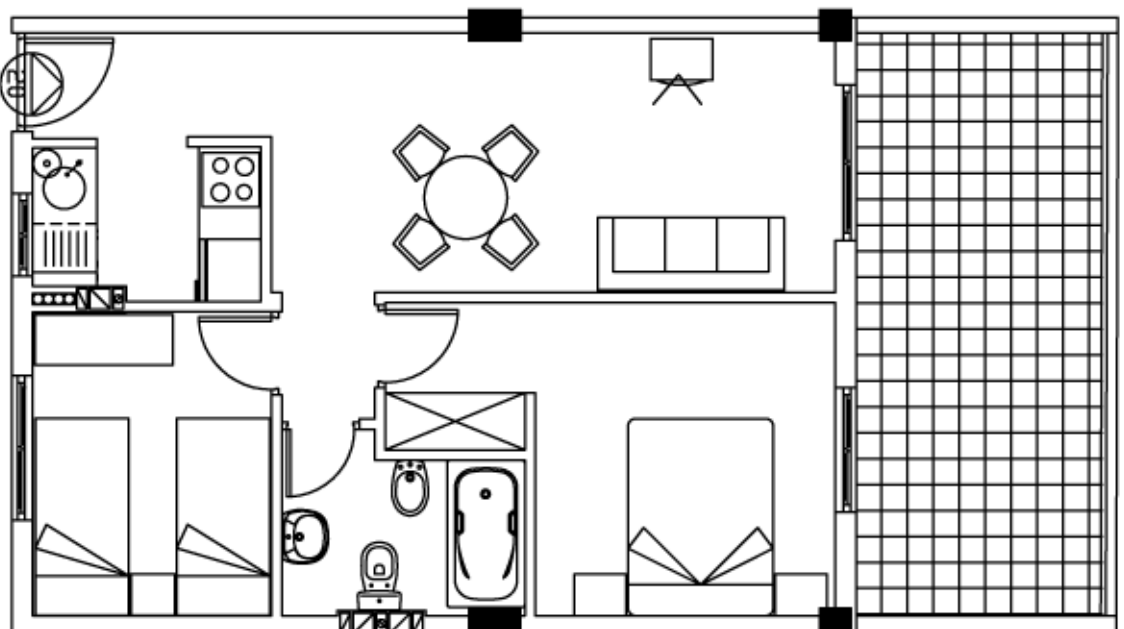


SOLARIUM
SUP.CONSTI: 47.83 M2



PLANTA CUBIERTA
Vivienda n° 19

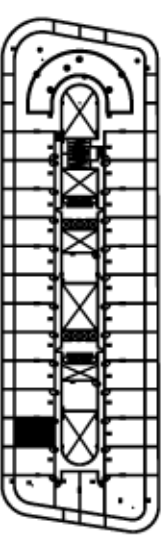
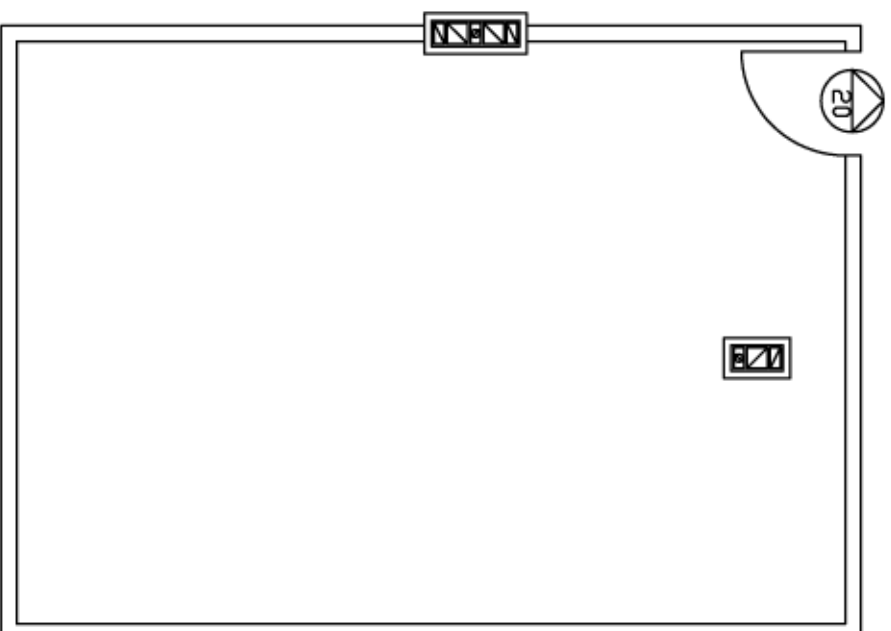
Residencial
Parque de las Avenidas III - Fase I



PLANTA ÁTICO
Vivienda n° 20

SUP. CONST + P. PROPORCIONAL	SUP. CONST TERRAZA	TOTAL
56.31 m ²	14.50 m ²	70.81 m ²

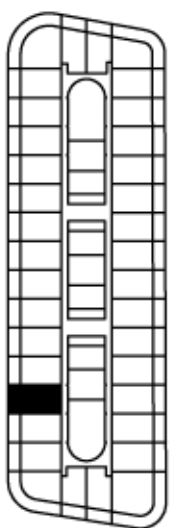
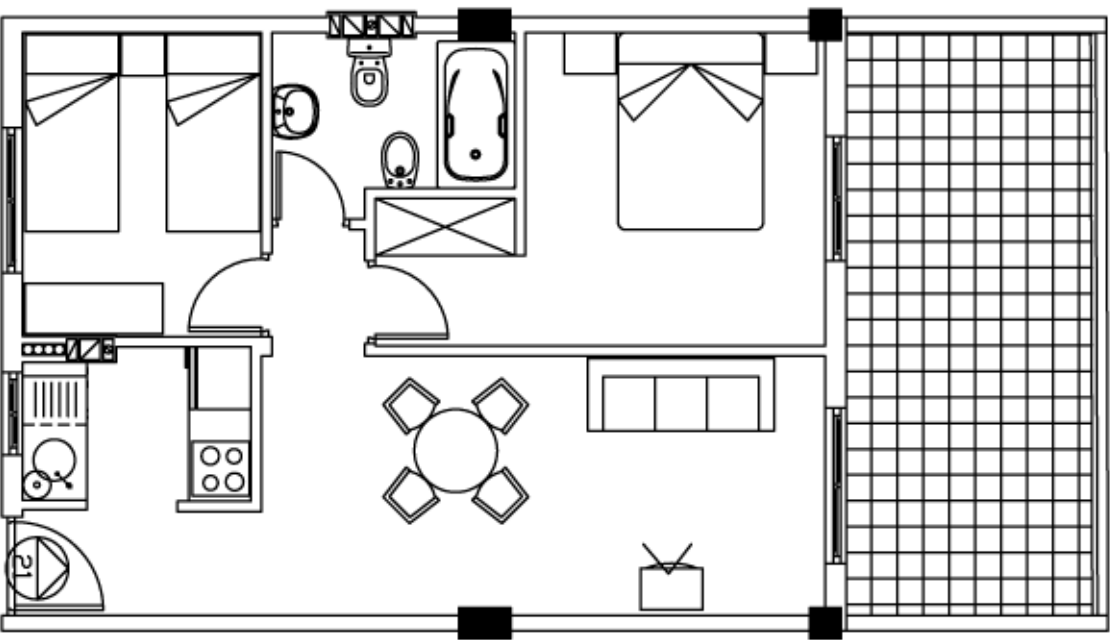
Residencial
Parque de las Avenidas III - Fase I



PLANTA CUBIERTA
Vivienda n° 20

SOLARIUM
SUP.CONSTI: 47.83 M2

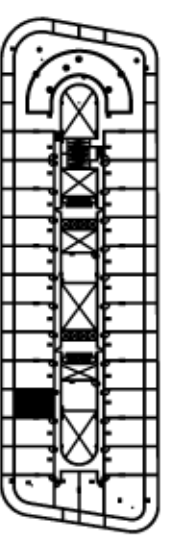
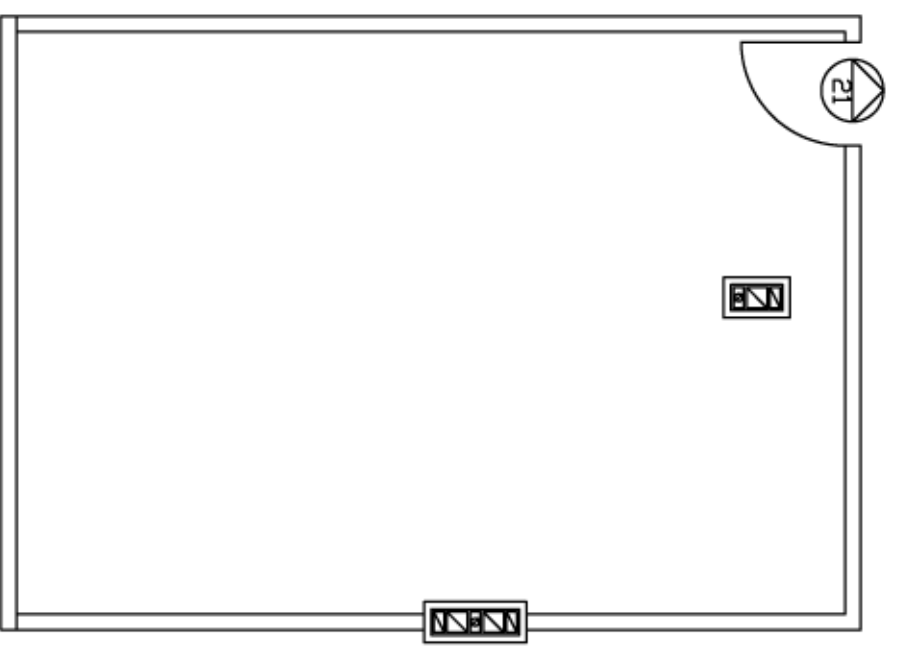
Residencial
Parque de las Avenidas III - Fase I



PLANTA ÁTICO
Vivienda n° 21

SUP. CONST + P. PROPORCIONAL	SUP. CONST TERRAZA	TOTAL
56.31 m ²	14.50 m ²	70.81 m ²

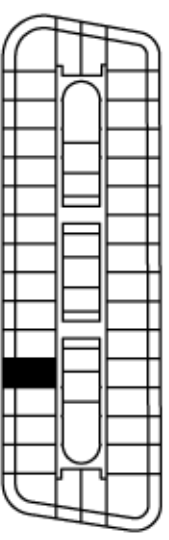
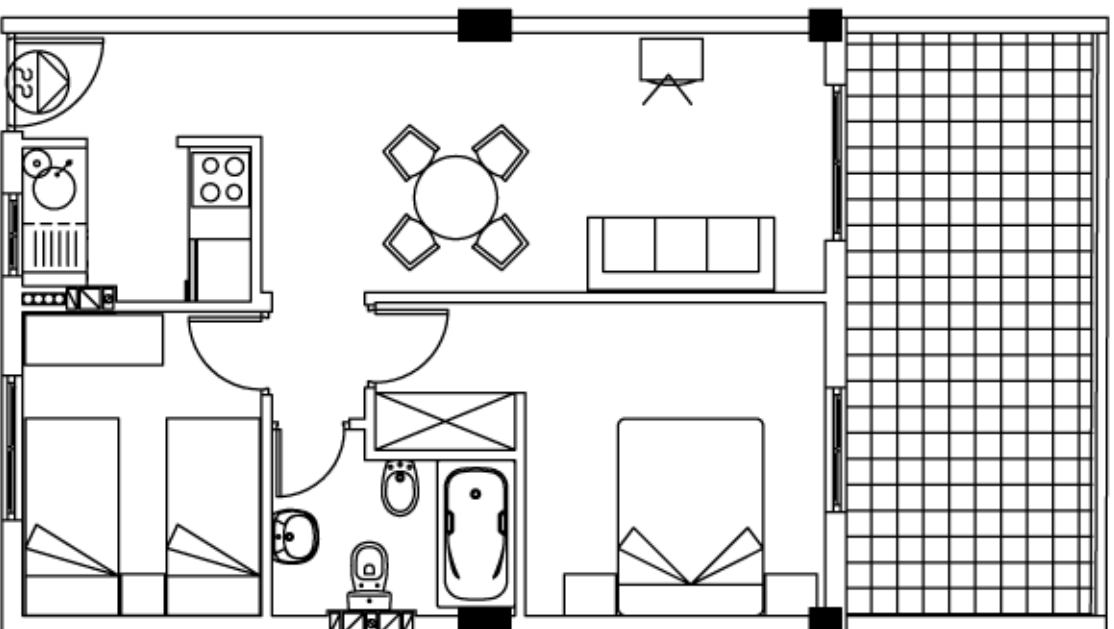
Residencial
Parque de las Avenidas III - Fase I



PLANTA CUBIERTA
Vivienda n° 21

SOLARIUM
SUP.CONSTI: 47.83 M2

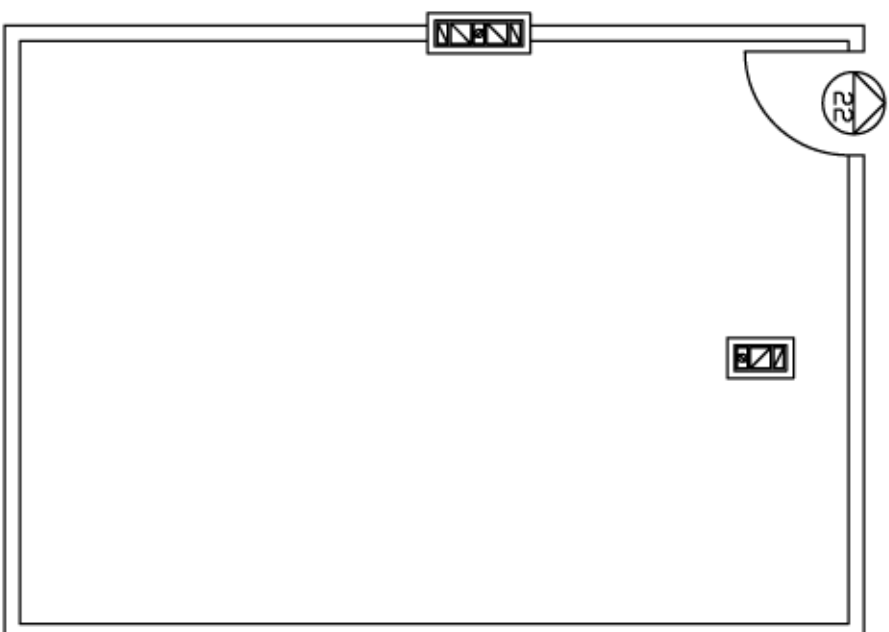
Residencial
Parque de las Avenidas III - Fase I



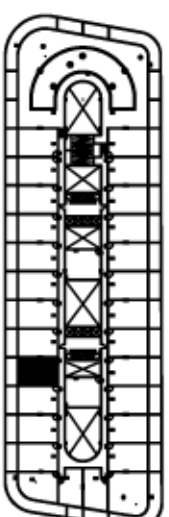
PLANTA ÁTICO
Vivenda n° 22

SUP. CONST + P. PROPORCIONAL	SUP. CONST TERRAZA	TOTAL
56.31 m ²	14.50 m ²	70.81 m ²

Residencial
Parque de las Avenidas III - Fase I

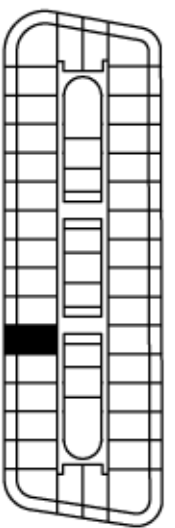
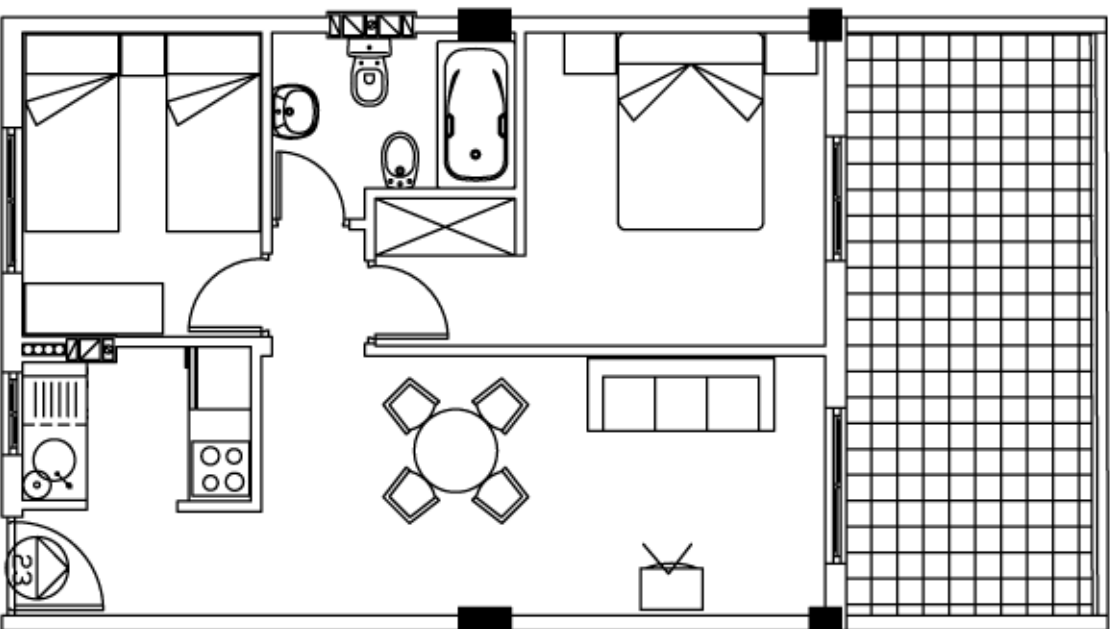


SOLARIUM
SUP.CONSTI: 47.83 M2



PLANTA CUBIERTA
Vivienda n° 22

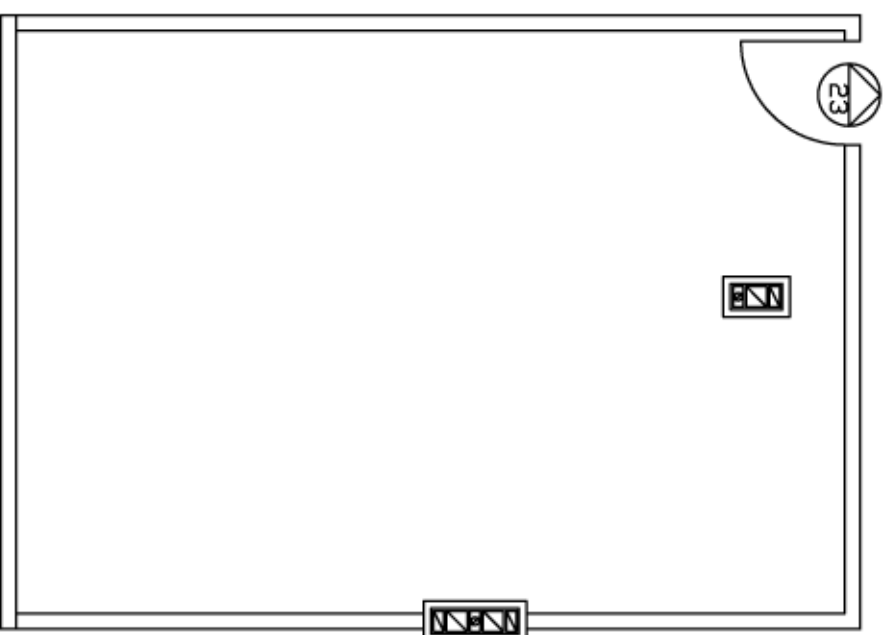
Residencial
Parque de las Avenidas III - Fase I



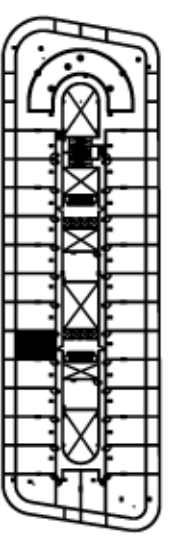
PLANTA ÁTICO
Vivienda n° 23

SUP. CONST + P. PROPORCIONAL	SUP. CONST TERRAZA	TOTAL
56.31 m ²	14.50 m ²	70.81 m ²

Residencial
Parque de las Avenidas III - Fase I

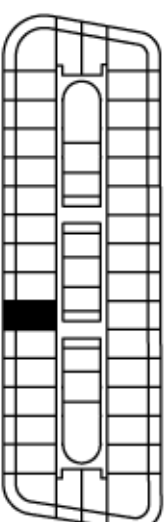
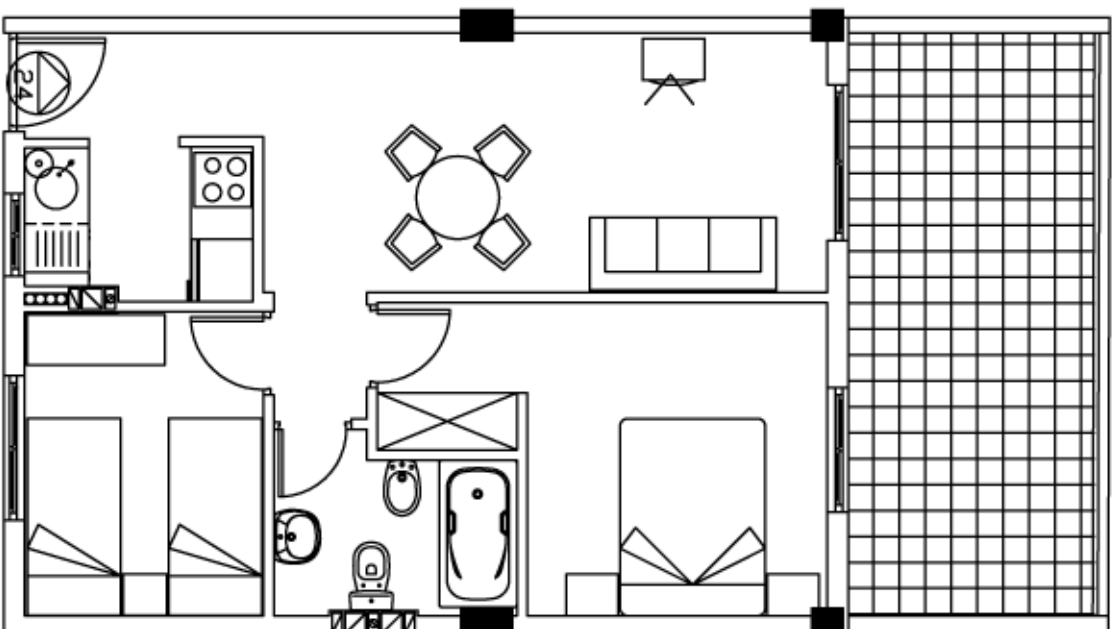


SOLARIUM
SUP.CONSTI: 47.83 M2



PLANTA CUBIERTA
Vivienda n° 23

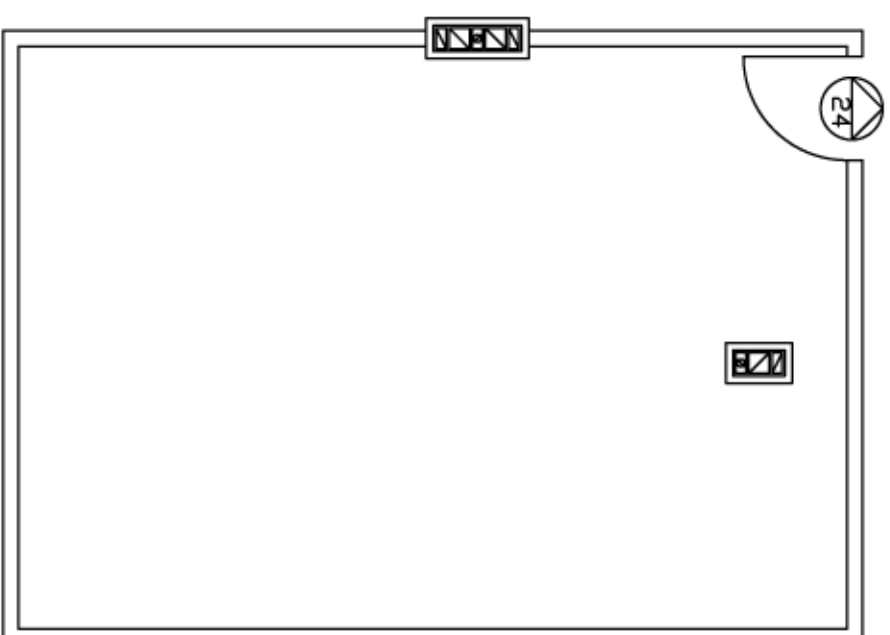
Residencial
Parque de las Avenidas III - Fase I



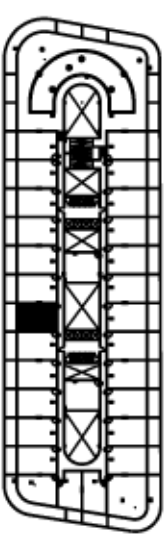
PLANTA ÁTICO
Vivienda n° 24

SUP. CONST + P. PROPORCIONAL	SUP. CONST TERRAZA	TOTAL
56.31 m ²	14.50 m ²	70.81 m ²

Residencial
Parque de las Avenidas III - Fase I

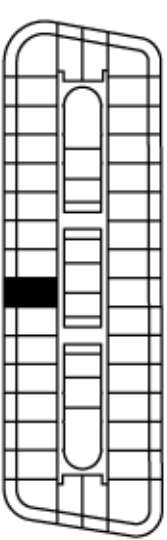
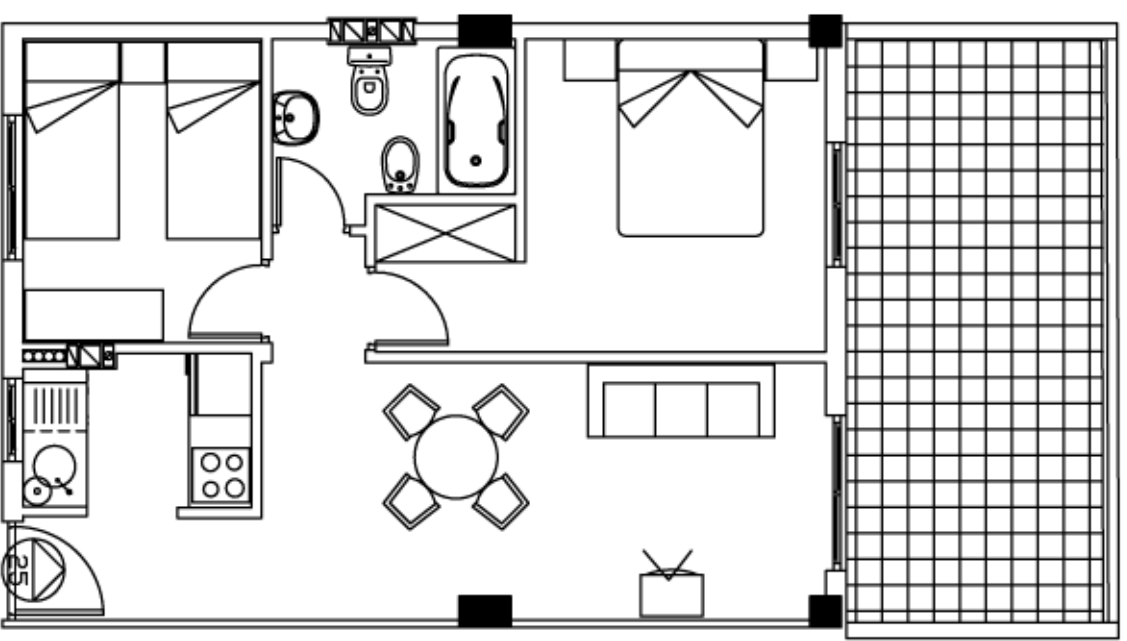


SOLARIUM
SUP.CONSTI: 47.83 M2



PLANTA CUBIERTA
Vivienda n° 24

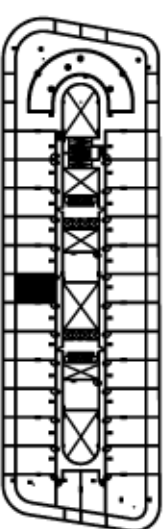
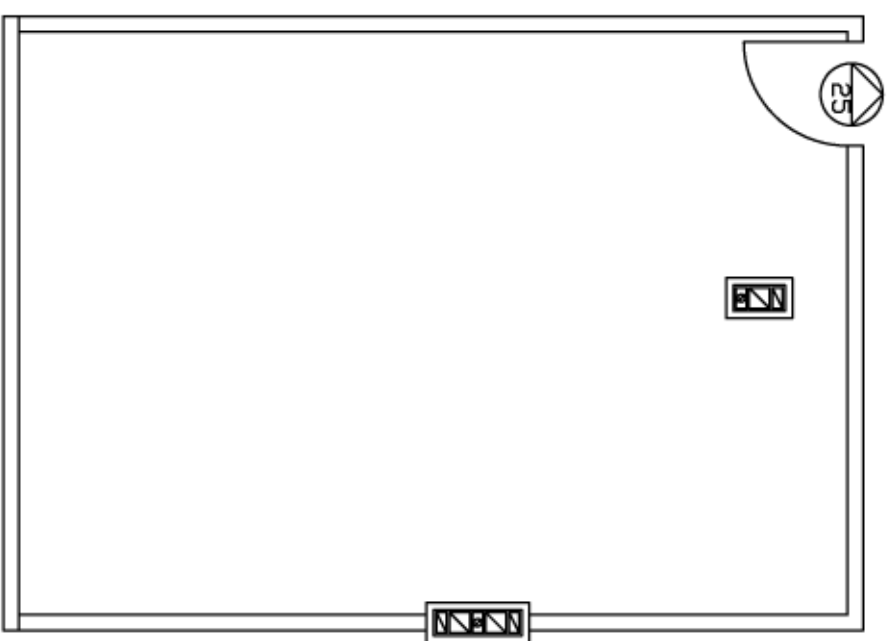
Residencial
Parque de las Avenidas III - Fase I



PLANTA ÁTICO
Vivienda n° 25

SUP. CONST + P. PROPORCIONAL	SUP. CONST TERRAZA	TOTAL
56.31 m ²	14.50 m ²	70.81 m ²

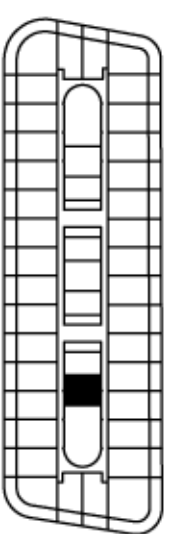
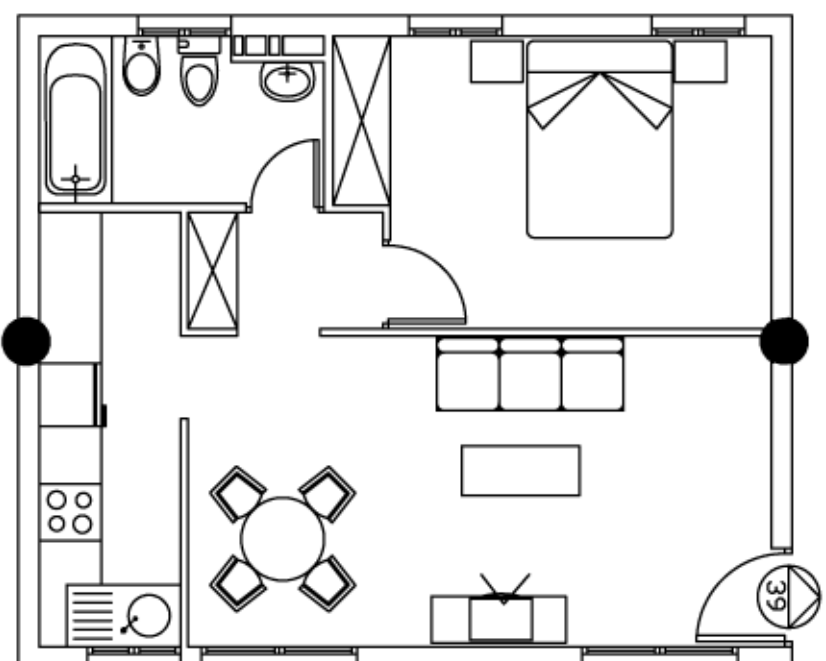
Residencial
Parque de las Avenidas III - Fase I



PLANTA CUBIERTA
Vivienda n° 25

SOLARIUM
SUP.CONSTI: 47.83 M2

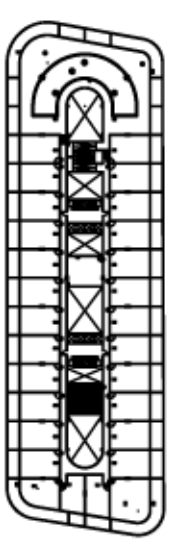
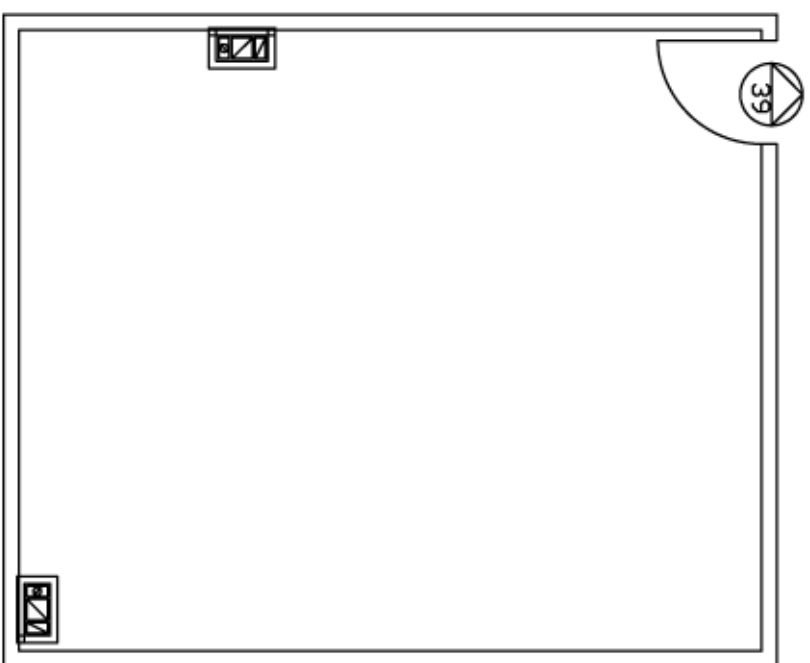
Residencial
Parque de las Avenidas III - Fase I



PLANTA ÁTICO
Vivienda n° 39

SUP. CONST + P. PROPORCIONAL	TOTAL
56.31 m ²	56.31 m ²

Residencial
Parque de las Avenidas III - Fase I

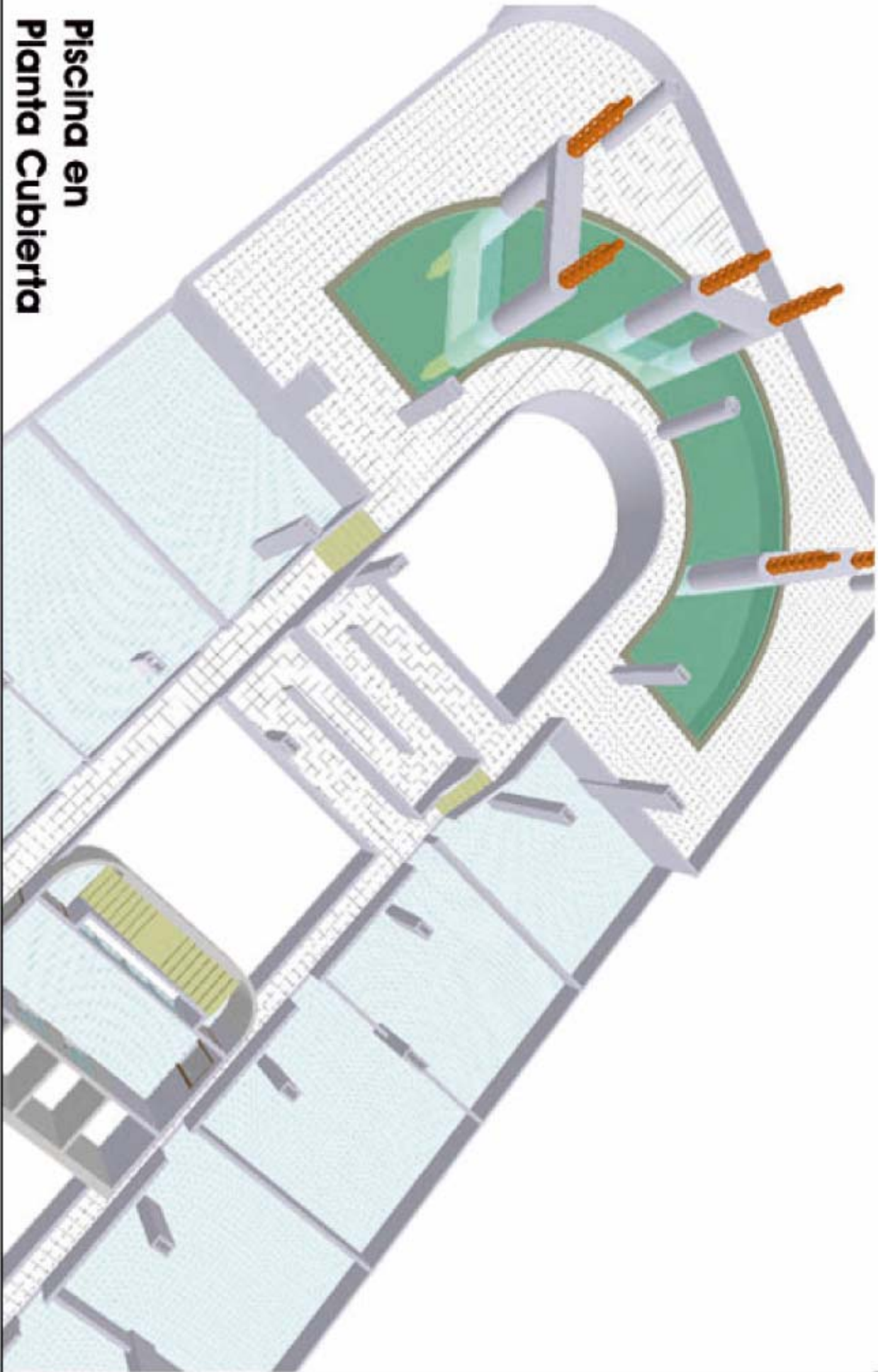


PLANTA CUBIERTA
Vivienda n° 39

SOLARIUM
SUP.CONSTI: 46.92 M2

detalle constructivo de la cubierta sujeto a posibles modificaciones por la direcci3n facultativa de la Promoci3n

Piscina en Planta Cubierta



Residencial
Parque de las Avenidas III - Fase I

Specifications

The Building

- Foundations of insulated slabs of reinforced concrete.
- Structure of pillars, flat beams and joists of reinforced concrete.
- Community roof and solariums pertaining to apartments on the top floor.
- Exterior finish in Cotegran or similar.
- House staircase with steps in marble.
- Lift with automatic doors, accesible for handicapped and electric open-close sensor.

The Apartment

- Exterior stonework and dividing walls between apartments, in double layer of double hollow bricks and thermo-acoustic insulation in expanded polystyrene.
- Interior partition of hollow bricks of 7 cm, and cement mortar.
- Tiling in the kitchen with ceramic tiles up to the ceiling, with an intermediate mosaic-like border. In the bathroom, ceramic tiles up to the ceiling with intermediate border.
- Top quality paving tiles, skirting board of equal quality.
- Plaster with PVC protection in interior areas.
- Reinforced entrance door finished in pine.

Interior joinery in pinewood for doors and cupboards.

- External joinery in aluminium painted white with PVC blinds, air entrained double glazing 4 mm, climalit type.
- Plumbing consisting of hot and cold water supply with copper pipes, stopcocks for each apartment, in washrooms and toilets.

The units on the penthouse floor which have a solarium will have a water supply in the solarium.

Sanware of vitrified white porcelain, Roca brand or similar, mixer tap, stainless steel sink and electric boiler with 50 litres capacity.

- Kitchen with floor and wall cupboards in pine with granite worktops or similar.
- Gotelet painting in vertical and horizontal facings. Wooden doors and built-in wardrobes in bedrooms.
- Electricity:

TV connections, in living room and double bedroom.

Telephone sockets in living room and double bedroom (with a reserve socket for other user).

The units with solarium will have a power point and TV connection.

Top quality mechanisms.

House parabolic antenna will be installed in the building.

- Installation of air-conditioning, the pre-installation for two units of split type will be done in the living room and double bedroom. .
- Equipment available for units: furniture, curtains, lights, duvets, bathroom accessories, household appliances and goods.
- An alarm will be installed with three sensors per apartment.
- Furthermore, home insurance will be included for one year.
- Locks, all apartments have bars at the windows and in the communal corridors.

The Development

- Community swimming pool consisting of bathing area for adults and children, with access from the floors with lift and via the staircases.
- NB: this development is subject to the project, quality control and any necessary on-site decisions.

Residencial Parque de las Avenidas III

Fase I

Listado de precios

Zona: Torrevieja	Fecha de entrega: Diciembre 2005
----------------------------	--

Vivienda	Dormitorios	Sup. Vivienda	Sup. Terraza	Precio
Primera Planta				
8	2	67,84	5,02	101.500 €
9	2	67,84	5,02	101.500 €
10	2	67,84	5,02	101.500 €
11	2	67,84	5,02	101.500 €
12	2	67,84	5,02	101.500 €
13	2	67,84	5,02	101.500 €
14	2	67,84	5,02	101.500 €
15	3	105	12,45	155.000 €
16	2	77,80	6,08	111.500 €
17	1	59,49	4,63	89.000 €
18	2	79,13	7,05	119.500 €
19	2	67,84	5,02	107.500 €
20	2	67,84	5,02	107.500 €
21	2	67,84	5,02	107.500 €
22	2	67,84	5,02	107.500 €
23	2	67,84	5,02	107.500 €
24	2	67,84	5,02	107.500 €
25	2	67,84	5,02	107.500 €
39	1	56,31	12,31	73.000 €
Segunda Planta				
8	2	67,84	5,02	109.000 €
9	2	67,84	5,02	109.000 €
10	2	67,84	5,02	109.000 €
11	2	67,84	5,02	109.000 €
12	2	67,84	5,02	109.000 €
13	2	67,84	5,02	109.000 €
14	2	67,84	5,02	109.000 €
15	3	105	12,45	161.000 €
16	2	77,80	6,08	119.000 €
17	1	59,49	4,63	93.500 €
18	2	79,13	7,05	127.500 €
19	2	67,84	5,02	115.000 €
20	2	67,84	5,02	115.000 €
21	2	67,84	5,02	115.000 €
22	2	67,84	5,02	115.000 €
23	2	67,84	5,02	115.000 €
24	2	67,84	5,02	115.000 €
25	2	67,84	5,02	115.000 €
39	1	56,31	-	76.000 €
Tercera Planta				

8	2	67,84	5,02	117.500 €
9	2	67,84	5,02	117.500 €
10	2	67,84	5,02	117.500 €
11	2	67,84	5,02	117.500 €
12	2	67,84	5,02	117.500 €
13	2	67,84	5,02	117.500 €
14	2	67,84	5,02	117.500 €
15	3	105	12,45	170.000 €
16	2	77,80	6,08	128.000 €
17	1	59,49	4,63	99.000 €
18	2	79,13	7,05	136.500 €
19	2	67,84	5,02	125.000 €
20	2	67,84	5,02	125.000 €
21	2	67,84	5,02	125.000 €
22	2	67,84	5,02	125.000 €
23	2	67,84	5,02	125.000 €
24	2	67,84	5,02	125.000 €
25	2	67,84	5,02	125.000 €
39	1	56,31	-	79.000 €
Cuarta Planta				
8	2	67,84	5,02	125.000 €
9	2	67,84	5,02	125.000 €
10	2	67,84	5,02	125.000 €
11	2	67,84	5,02	125.000 €
12	2	67,84	5,02	125.000 €
13	2	67,84	5,02	125.000 €
14	2	67,84	5,02	125.000 €
15	3	105	12,45	180.000 €
16	2	77,80	6,08	138.000 €
17	1	59,49	4,63	103.500 €
18	2	79,13	7,05	148.500 €
19	2	67,84	5,02	137.500 €
20	2	67,84	5,02	137.500 €
21	2	67,84	5,02	137.500 €
22	2	67,84	5,02	137.500 €
23	2	67,84	5,02	137.500 €
24	2	67,84	5,02	137.500 €
25	2	67,84	5,02	137.500 €
39	1	56,31	-	82.000 €
Planta Atico				
8	2	56,31	14,50 + 47,83	143.500 €
9	2	56,31	14,50 + 47,83	143.500 €
10	2	56,31	14,50 + 47,83	143.500 €
11	2	56,31	14,50 + 47,83	143.500 €
12	2	56,31	14,50 + 47,83	143.500 €
13	2	56,31	14,50 + 47,83	143.500 €
14	2	56,31	14,50 + 47,83	143.500 €
15	3	85,13	45,85 + 70,90	199.500 €
16	1	50,75	12,75 + 32,56	115.500 €
17	Estudio	37,40	8,20 + 28,68	99.500 €
18	2	65,92	40,20 + 46,65	179.500 €
19	2	56,31	14,50 + 47,83	150.500 €
20	2	56,31	14,50 + 47,83	150.500 €

21	2	56,31	14,50 + 47,83	150.500 €
22	2	56,31	14,50 + 47,83	150.500 €
23	2	56,31	14,50 + 47,83	150.500 €
24	2	56,31	14,50 + 47,83	150.500 €
25	2	56,31	14,50 + 47,83	150.500 €
39	1	56,31	0,0 + 46,92	95.000 €