

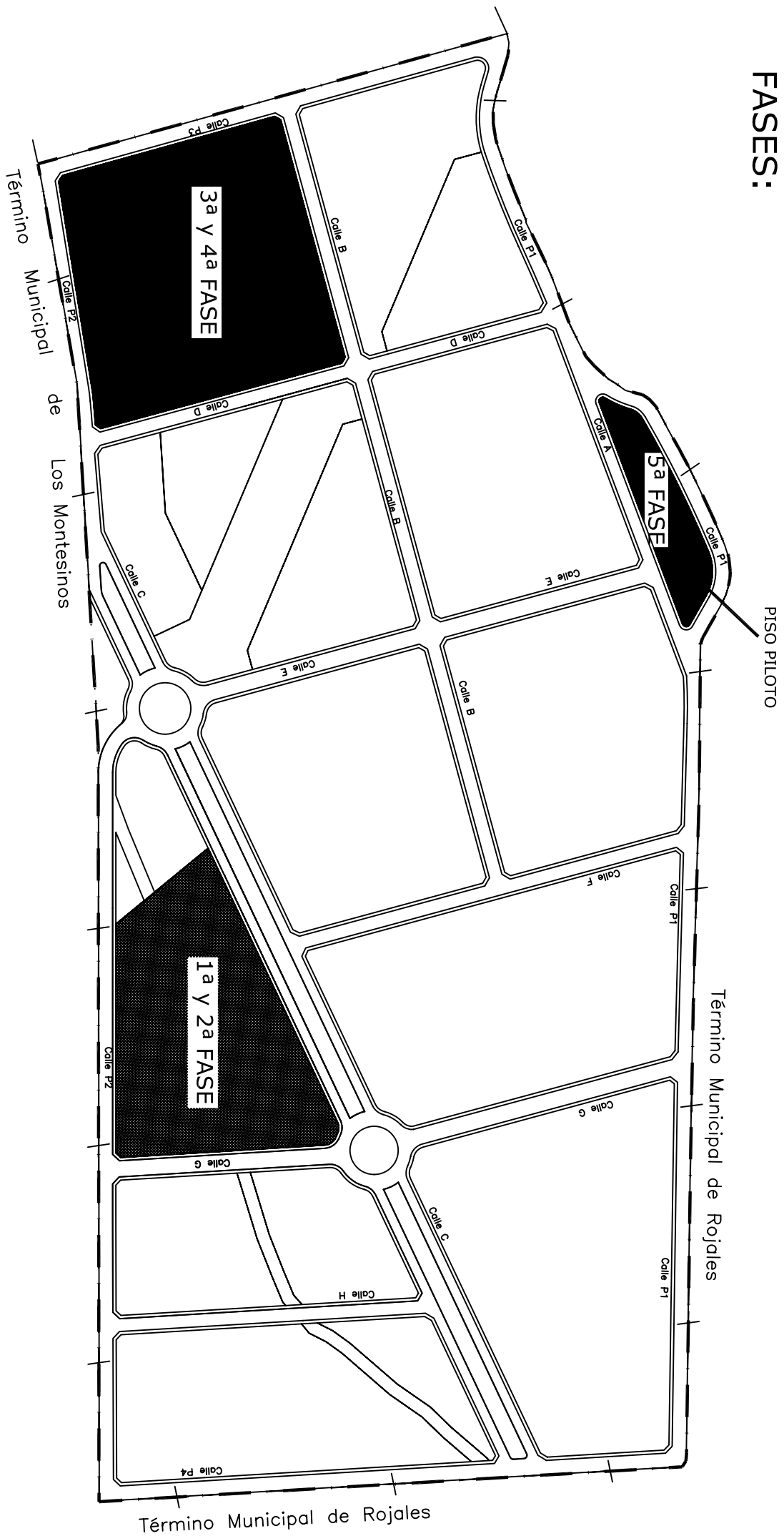


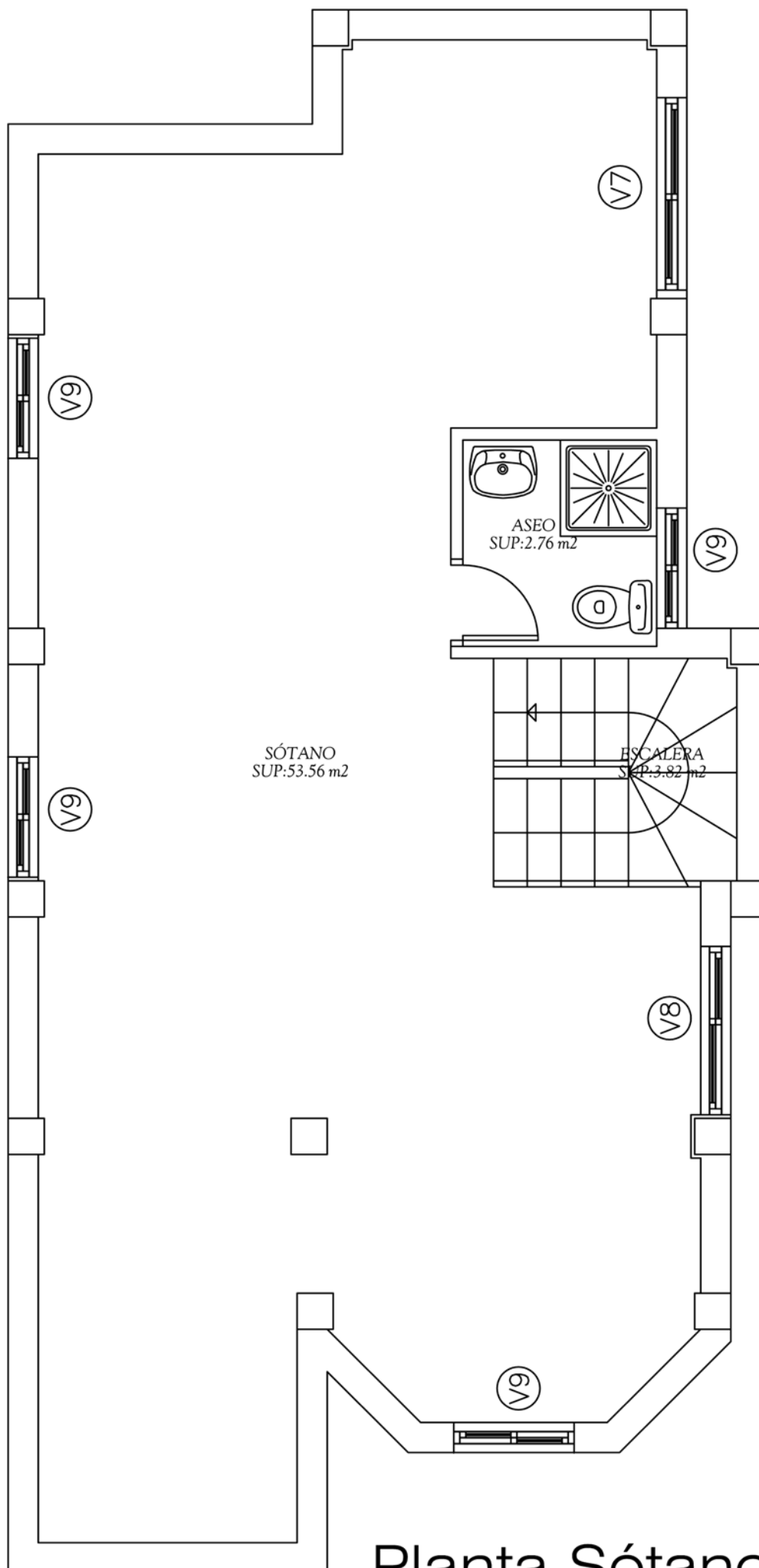
Lo Crispin

Vista Aerea / Aerial Picture



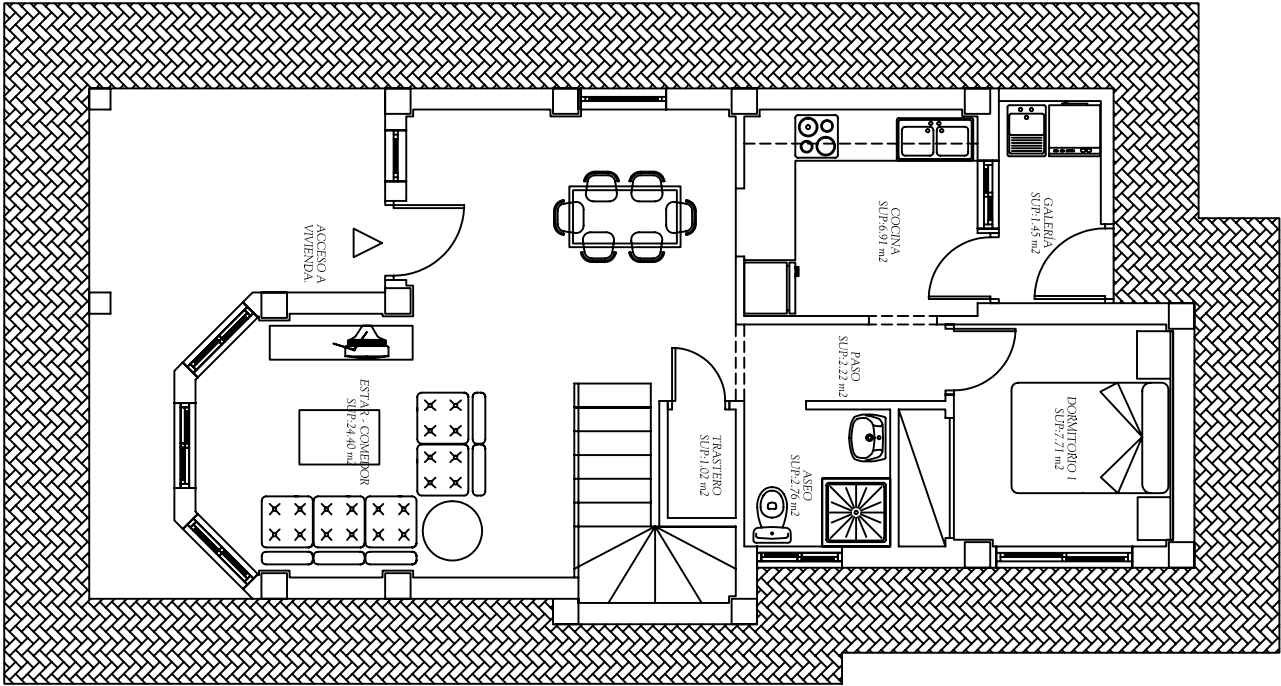
FASES:



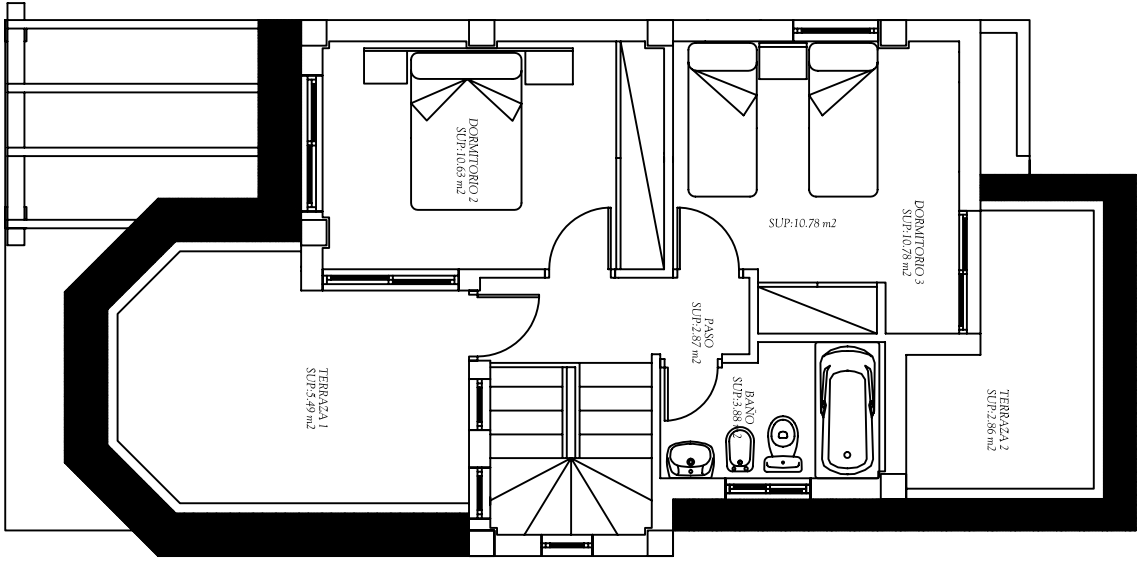


Planta Sótano

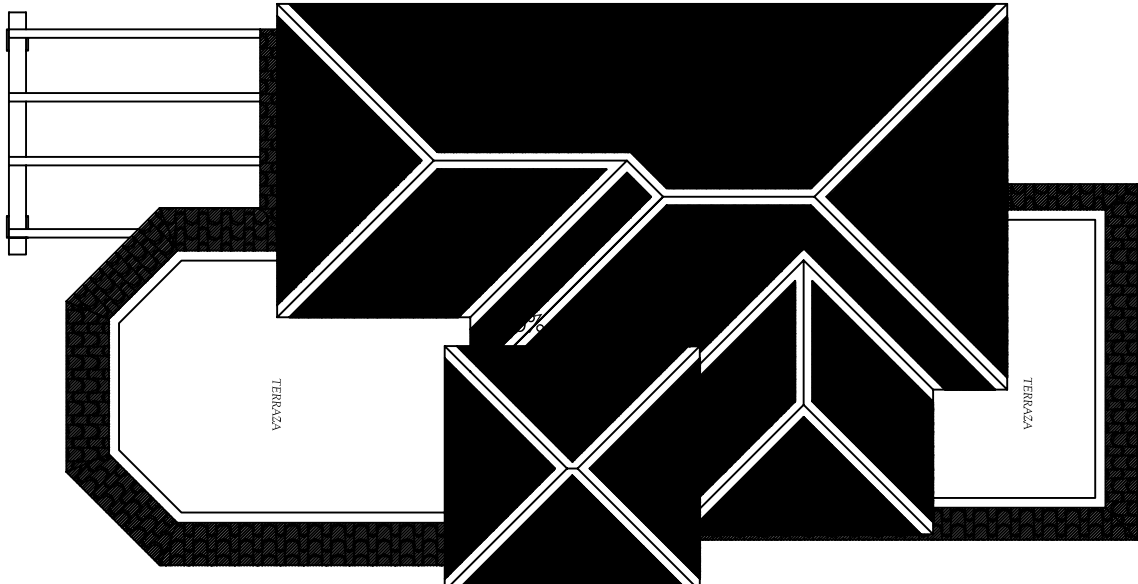
MODELO TAMARINDO 3 DORMITORIOS



Planta Baja



Planta Primera



Planta Cubierta



Modelo **TAMARINDO** - 3 DORMITORIOS

Superficie construida	98,28 m ²
Terrazas	16,71 m ²
Porche	8,79 m ²
TOTAL	123,78 m²

Piso Piloto / Show House



PRICES LIST (Fase 2)

PARCELAS / PLOT	METROS / METERS	DORMITORIOS / BEDROOMS	UBICACIÓN / LOCATION	PRECIO / PRICE
23	306 m2	3	ESQUINA / CORNER	VENDIDA / SOLD
24	220m2	3		VENDIDA / SOLD
25	220m2	3		VENDIDA / SOLD
RSV. 26	306m2	3	ESQUINA / CORNER	243.500
27	276m2	3	ESQUINA / CORNER	VENDIDA / SOLD
28	210m2	3		VENDIDA / SOLD
29	210m2	3		VENDIDA / SOLD
30	275m2	3	ESQUINA / CORNER	241.700
31	245m2	3	ESQUINA / CORNER	VENDIDA / SOLD
32	207m2	3		VENDIDA / SOLD
33	207m2	3		VENDIDA / SOLD
34	224m2	3		VENDIDA / SOLD
35	239m2	3	ESQUINA / CORNER	VENDIDA / SOLD
36	292m2	3	ESQUINA / CORNER	241.220
37	250m2	3		VENDIDA / SOLD
38	250m2	3		VENDIDA / SOLD
39	292m2	3	ESQUINA / CORNER	256.350 Incluye piscina de 5x3m
40	273m2	3	ESQUINA / CORNER	238.700
41	210m2	2		VENDIDA / SOLD
43	240m2	3		214.500
44	273m2	3	ESQUINA / CORNER	232.280
45	276m2	3	ESQUINA / CORNER	233.360
47	220m2	2		VENDIDA / SOLD
48	249m2	3		VENDIDA / SOLD

PRICES LIST (Fase 3)

PARCELAS / PLOT	METROS / METERS	DORMITORIOS / BEDROOMS	UBICACIÓN / LOCATION	PRECIO / PRICE
24	179,47m2	3		199.500 €

PRICES LIST (Fase 4)

PARCELA / PLOT	SUP.M2	PRECIO / PRICE	DORMITORIOS / BEDROOMS	UBICACIÓN / LOCATION	SÓTANO / UNDER BUILD	TOTAL
38	216,52	225.000 €	3		45.000 €	270.000 €
39	216,55	225.000 €	3		45.000 €	270.000 €
40	216,58	225.000 €	3		45.000 €	270.000 €
RSV.41	216,59	225.000 €	3		45.000 €	270.000 €
42	216,41	VENDIDA	3		45.000 €	270.000 €
43	213,55	VENDIDA	3	ESQUINA / CORNER	45.000 €	VENDIDA / SOLD
44	217,00	225.000 €	3		45.000 €	270.000 €
45	217,00	225.000 €	3		45.000 €	270.000 €
46	217,00	225.000 €	3		45.000 €	270.000 €
47	217,00	225.000 €	3		45.000 €	270.000 €
48	217,00	225.000 €	3		45.000 €	270.000 €
RSV. 49	215,38	230.000 €	3	ESQUINA / CORNER	45.000 €	VENDIDA / SOLD
50	243,35	212.900 €	3			
51	244,48	212.900 €	3			
52	245,00	212.900 €	3			
53	246,7	212.900 €	3			
54	246,6	224.900 €	3	ESQUINA / CORNER		
55	207,4	202.000 €	3			
56	202,94	200.000 €	3			
57	202,94	200.000 €	3			
58	202,94	200.000 €	3			
59	221,58	229.900 €	3	ESQUINA / CORNER		
60	290,3	224.000 €	3			
61	228,71	205.900 €	3			

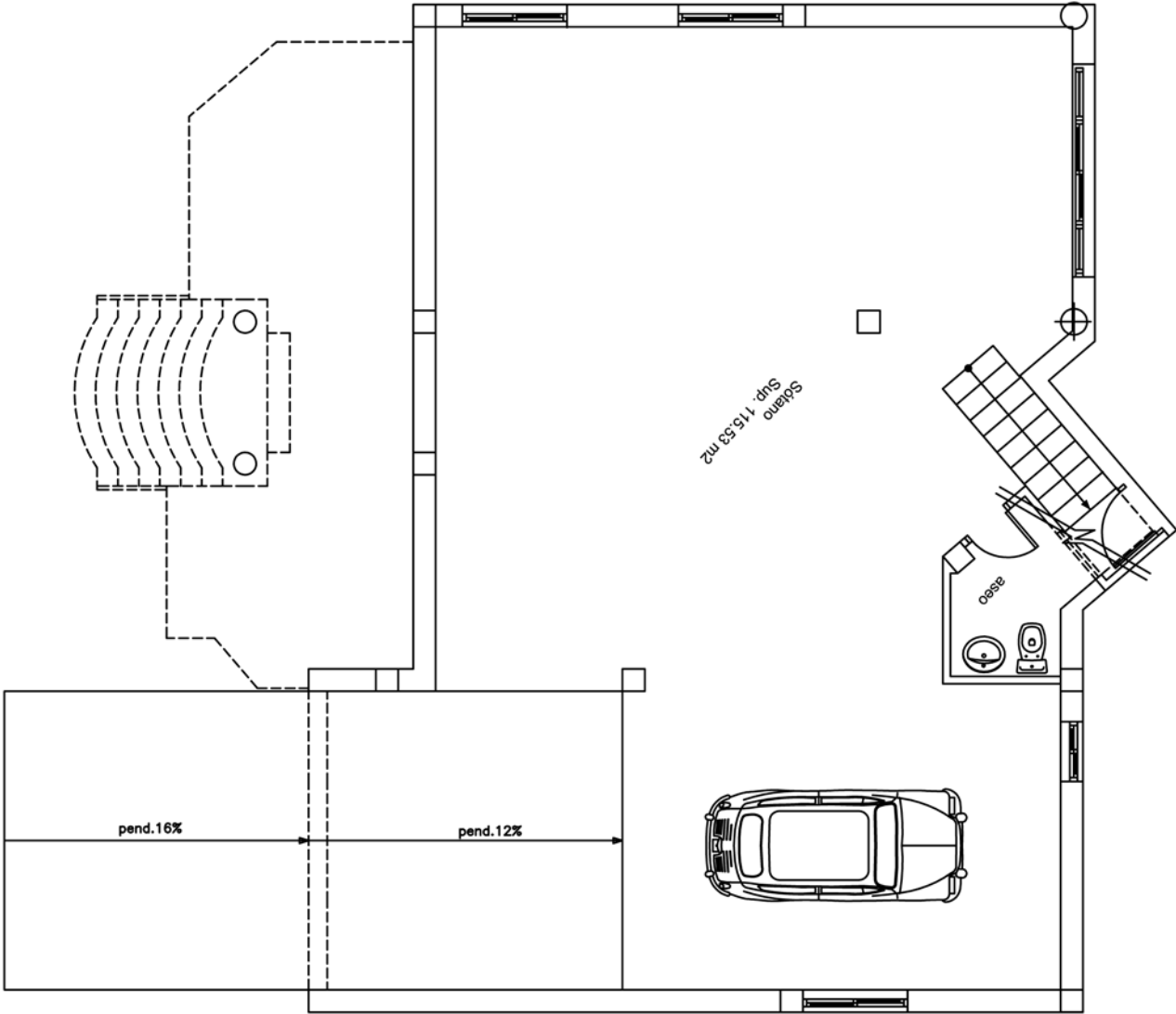
62	228,71	205.900 €	3	
63	247,71	223.900 €	3	ESQUINA / CORNER
64	239,58	212.500 €	3	
65	237,29	VENDIDA	3	
66	236,42	211.900 €	3	
67	257,7	231.900 €	3	ESQUINA / CORNER

VILLA MAYRA

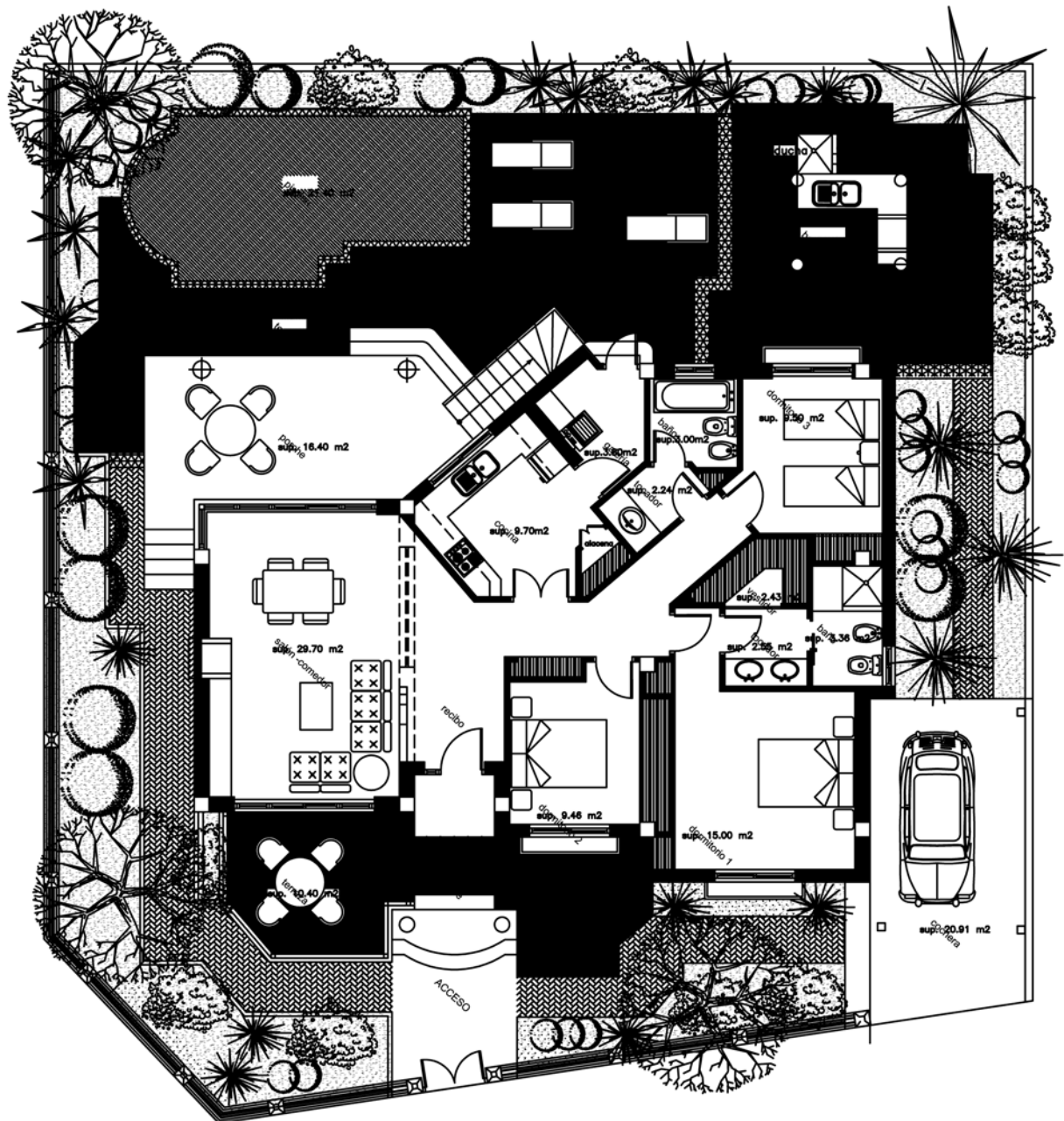
A 3D architectural rendering of Villa Mayra, a modern single-story house. The house has orange walls, white trim, and a tiled roof. It features a large glass-enclosed porch, a covered patio area with a pergola, and a swimming pool. The property is surrounded by lush greenery and a paved driveway. A car is parked on the driveway, and people are shown relaxing in the garden. The text "VILLA MAYRA" is displayed at the top of the image. In the bottom left corner, there is a small logo and text: "IMAGINAR ARQUITECTURA" and "PROYECTO DE ARQUITECTURA". At the bottom center, there is a line of text: "RENDERING ARTISTICA APROXIMADA. SIN VALOR CONTRACTUAL".

IMPRENSA ARTISTICA APROXIMADA, SIN VALOR CONTRACTUAL

Planta Sótano



Planta Baja



PLANTA BAJA

PRICES LIST (CHALETS)

PARCELA / PLOT	SUP. M2	PRECIO / PRICE	DORMITORIOS / BEDROOMS	UBICACIÓN / LOCATION	UNDER BUILD	
1	448,68	VENDIDA / SOLD	3	ESQUINA / CORNER		
2	391,43	VENDIDA / SOLD	3	ESQUINA / CORNER		
3	376,12	VENDIDA / SOLD	3	ESQUINA / CORNER		
RSV. 4	388,61	335.000 €	3	ESQUINA / CORNER		
5	394,62	346.000 €	3			
6	396,8	VENDIDA / SOLD	3	ESQUINA / CORNER	SÓTANO	
7	401,84	410.000 €	3	ESQUINA / CORNER		
8	403,12	VENDIDA / SOLD	3			
9	403,12	VENDIDA / SOLD	3			
10	380,43	VENDIDA / SOLD	3	ESQUINA / CORNER		
11	391,94	VENDIDA / SOLD	3	ESQUINA / CORNER		
12	393	348.800 €	3			
13	393	348.800 €	3			
14	393	348.800 €	3			
15	388,28	VENDIDA / SOLD	3	ESQUINA / CORNER	SÓTANO	TOTAL
16	444,81	VENDIDA / SOLD	3	ESQUINA / CORNER	VENDIDA / SOLD	VENDIDA / SOLD
17	357	335.000 €	3	ESQUINA / CORNER	60.000	395.000 €
18	427,6	374 €	3	ESQUINA / CORNER	60.000	434 €
19	388,5	349.000 €	3	ESQUINA / CORNER	60.000	409.000 €
20	404,95	342.000 €	3		60.000	402.000 €
21	435,15	VENDIDA / SOLD	3	ESQUINA / CORNER	VENDIDA / SOLD	VENDIDA / SOLD
22	414	VENDIDA / SOLD	3	ESQUINA / CORNER	VENDIDA / SOLD	VENDIDA / SOLD
23	414	350.000 €	3		60.000	410.000 €
24	499,94	380.000 €	3	ESQUINA / CORNER	60.000	440.000 €
25	388,5	348.000 €	3	ESQUINA / CORNER	60.000	408.000 €
26	388,5	340.000 €	3		60.000	400.000 €
27	388,5	340.000 €	3		60.000	400.000 €
28	388,5	340.000 €	3		60.000	400.000 €
29	414,45	355.000 €	3	ESQUINA / CORNER	60.000	415.000 €

30	380,7	PILOTO	3	ESQUINA / CORNER	60.000	PILOTO
31	378	349.000 €	3		60.000	409.000 €

32	378	349.000 €	3		60.000	409.000 €
33	378	349.000 €	3		60.000	409.000 €
34	378,22	354.000 €	3	ESQUINA / CORNER	60.000	414.000 €

PACK PISCINA:

PISCINA DE 7x3,30 m DE MOSAICO EN COLORES Y CENEFA.
KIT DE COCINA- BARBACOA EXTERIOR, CON FREGADERO,
ETC

PRECIO

TERRAZA EXTERIOR REVESTIDA DE PAVIMENTO DE
GRESS ANTIDESLIZANTE.

JARDINERAS PERIMETRALES PREFABRICADAS.

27.000 €

POOL PACK:

MOSIAC SWIMMING POOL 7X3,30 M

BARBACUE - KITCHEN KIT, WITH SINK, ETC

EXTERIOR TERRACE WITH NON - SLIP TILES

PERIMETRAL GARDEN PLANT POTS

PRICE

27.000 €

SÓTANO:

TIENE UNA SUPERFICIE TOTAL DE 115 m2.

CONSTA DE UNA RAMPA DE ACCESO PARA VEHÍCULOS.

60.000€

UNDERBUILD:

TOTAL M2 115M2

WITH A SLOP FOR CAR ACCESS

60.000€

CONSTRUCTION SPECIFICATIONS

- REINFORCED EARTHQUAKE-PROOF CONCRETE STRUCTURE.
- EXTERNAL WALLS COVERED IN SINGLE LAYER OF MORTAR AND EXTERIOR WINDOWSILLS AND FRAME MADE FROM CARAVISTA BRICK PULP.
- SKIRTING BOARD IN STONE PULP WITH NATURAL STONE ASPECT.
- FRIEZE OF THE TILE AT THE END OF THE FRONTAGE.
- INTERIOR EARTHENWARE FLOOR TILES.
- MARBLE STEPS ON STAIRCASES.
- INTERIOR WALLS COVERED IN PLASTER AND FINE GOTELE PLASTIC PAINT.
- TILED WALLS IN KITCHEN, TOILET AND BATHROOM.
- EXTERIOR WHITE LACQUERED ALUMINIUM FRAME DOORS WITH BOLTELS.
- CLIMALIT GLASS WINDOWS OR SIMILAR.
- WOODEN FRONT DOOR WITH SECURITY LOCK.
- INTERIOR DOORS MADE FROM NATURAL WOOD.
- FITTED CUPBOARDS IN BEDROOMS.
- LIGHT COLOR, WOODEN KITCHEN UNITS.
- KITCHEN SURFACE MADE FROM PINK PORRIÑO GRANITE WITH DOUBLE EDGE.
- COPPER COLD AND HOT WATER PIPES.
- MIXER TAPS..
- TV ANTENNA PREINSTALLATION IN LIVING ROOM AND TWO MAIN BEDROOMS.
- TELEPHONE INSTALLATION.
- ELECTIC WATER HEATER 75 L.
- CHIMNEY PREINSTALLATION.
- AIR CONDITIONING PREINSTALLATION.
- EXTERNAL PAVED AREA FOR PARKING(WIDTH-3.5M).
- EXTERNAL METAL GRILLES ON GROUND FLOOR WINDOWS.
- 1M- HIGH PERIMETER WALL AROUND THE PROPERTY MADE FROM 20 CM BLOCKS AND COVERED BY A SINGLE LAYER SIMILAR TO THAT USED ON THE FRONT OF THE BUILDING.
- SHOWER ON GROUND FLOOR.
- DECORATIVE CEILING BEAMS IN THE LIVING-DINING ROOM.
- ELECTRICAL WHITEGOODS: WASHINGMACHINE, CERAMIC HOB , OVEN, EXTRACTOR AND A FRIDGE-FREEZER.