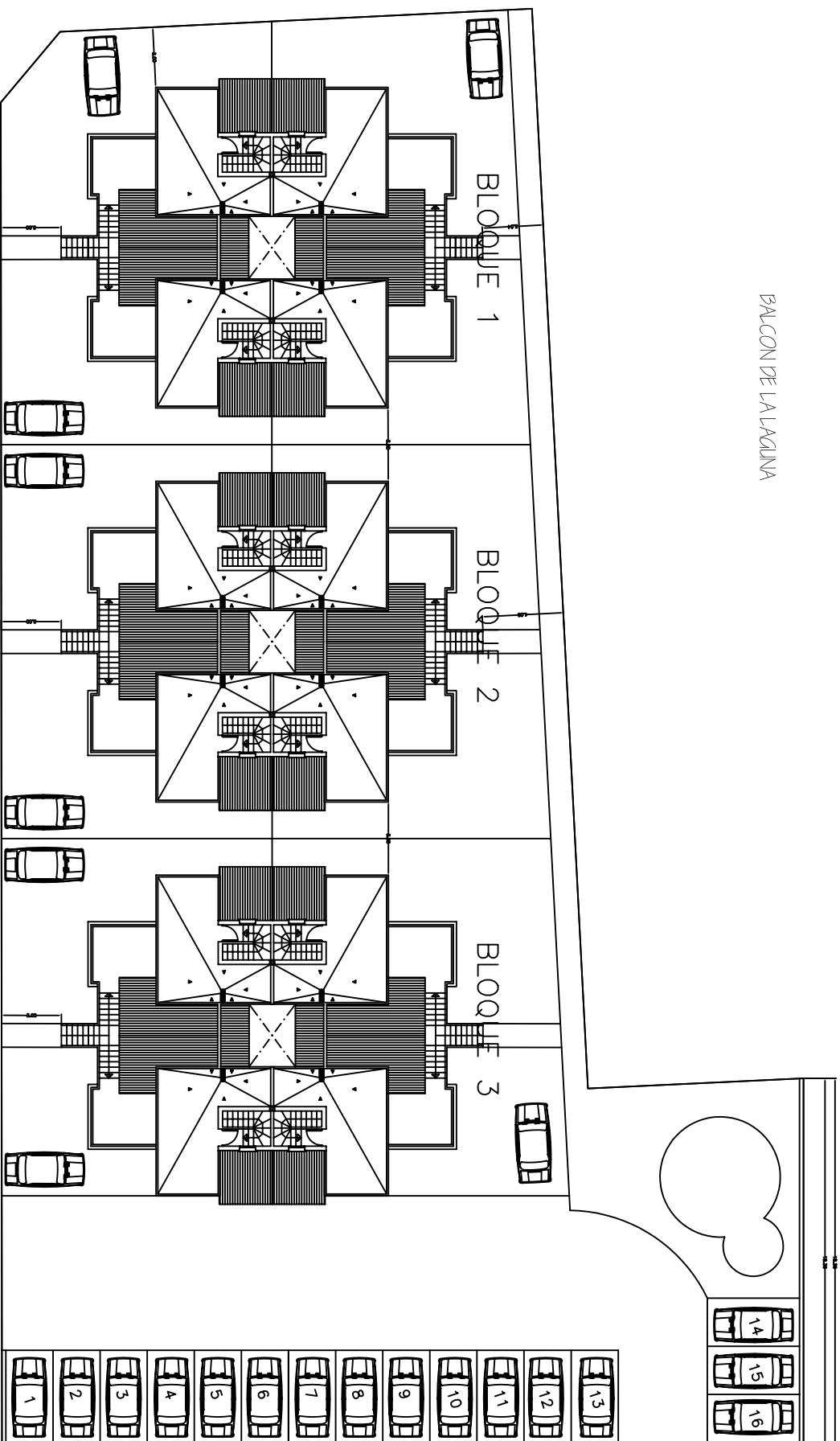




BALCON DE LA LAGUNA

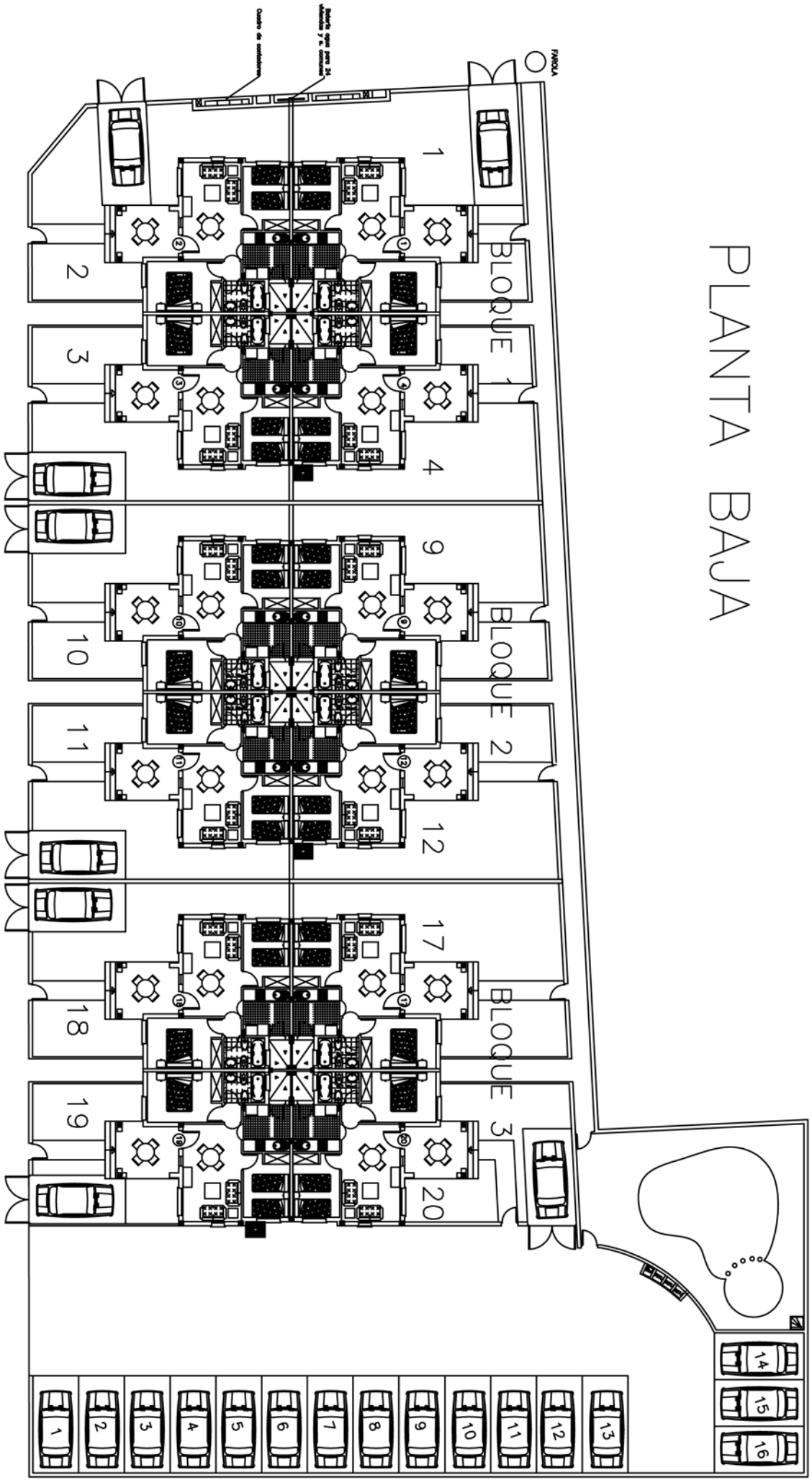
BALCON DE LALAGUNA



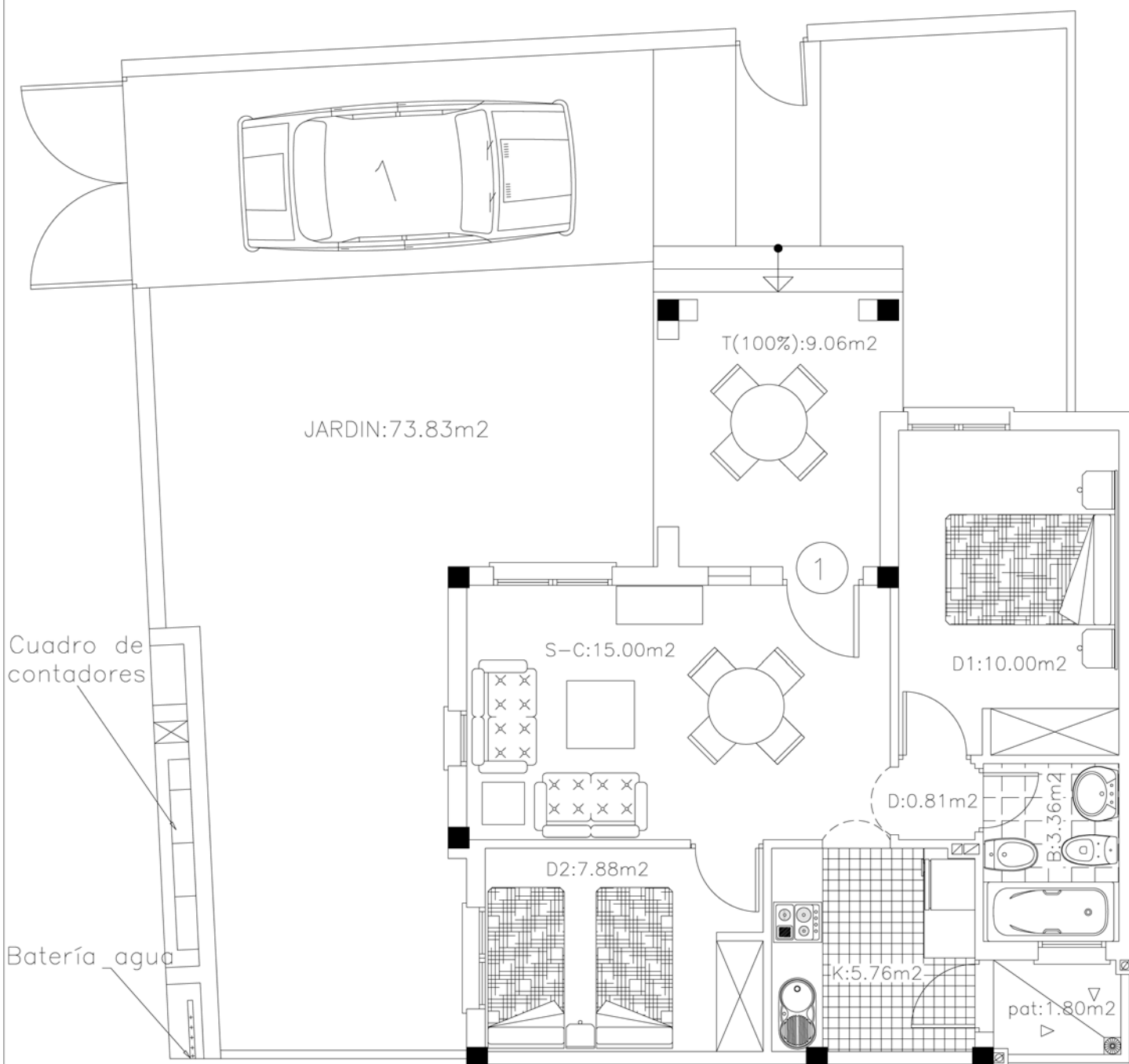
Plaza	Superf. const.
1	10,81 m ²
2	10,81 m ²
3	10,81 m ²
4	10,81 m ²
5	10,81 m ²
6	10,81 m ²
7	10,81 m ²
8	10,81 m ²
9	10,81 m ²
10	10,81 m ²
11	10,81 m ²
12	10,81 m ²
13	10,81 m ²
14	11,04 m ²
15	11,04 m ²
16	11,04 m ²

PLANO DE URBANIZACION

PLANTA BAJA



EL BALCON DE LA LAGUNA



VIVIENDA 1

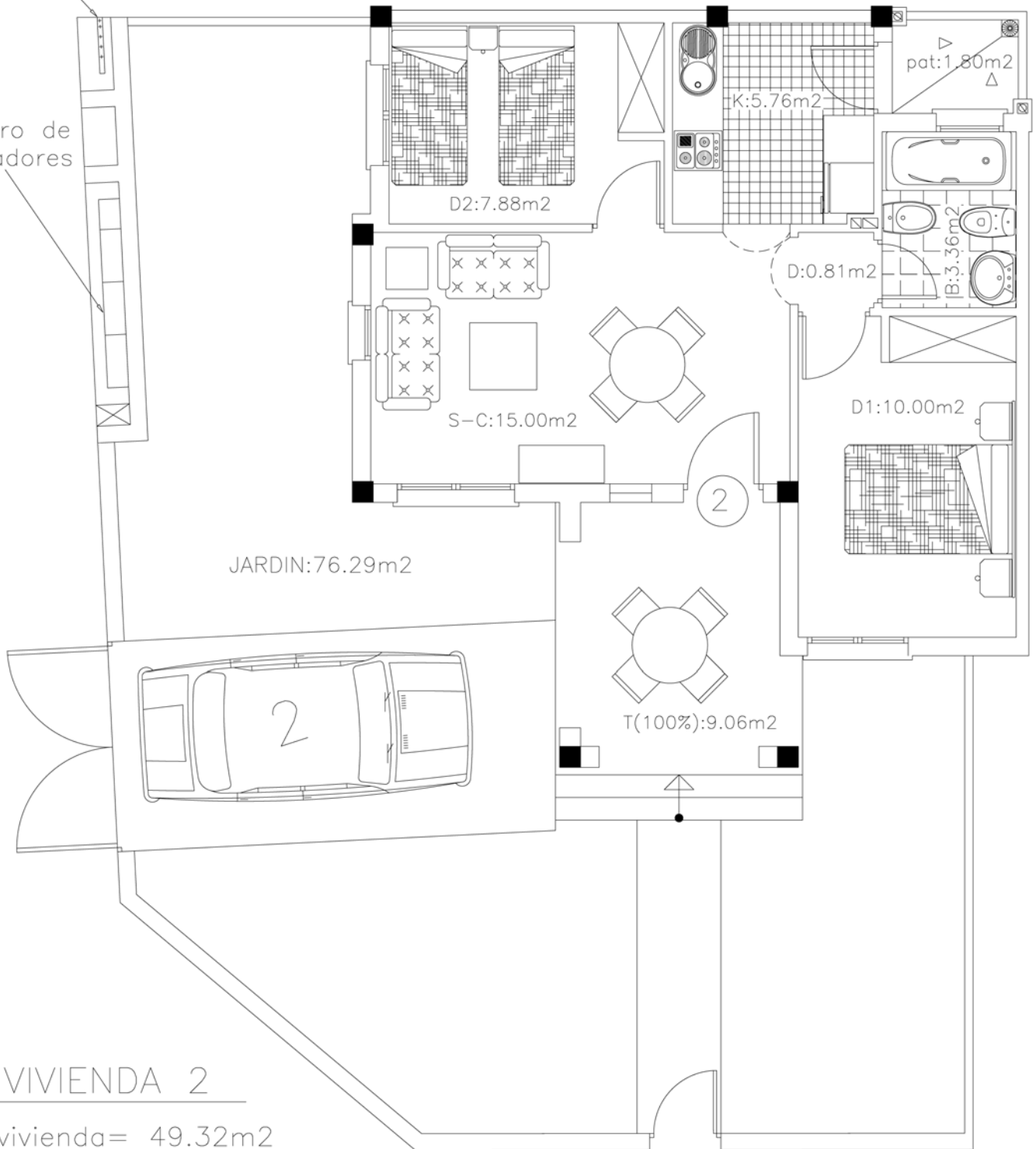
vivienda= 49.32m²
terrace = 9.06m²
patio = 1.80m²
jardin= 73.83m²

PLANTA BAJA(BLOQUE 1)

Batería agua

EL BALCON DE LA LAGUNA

Cuadro de contadores

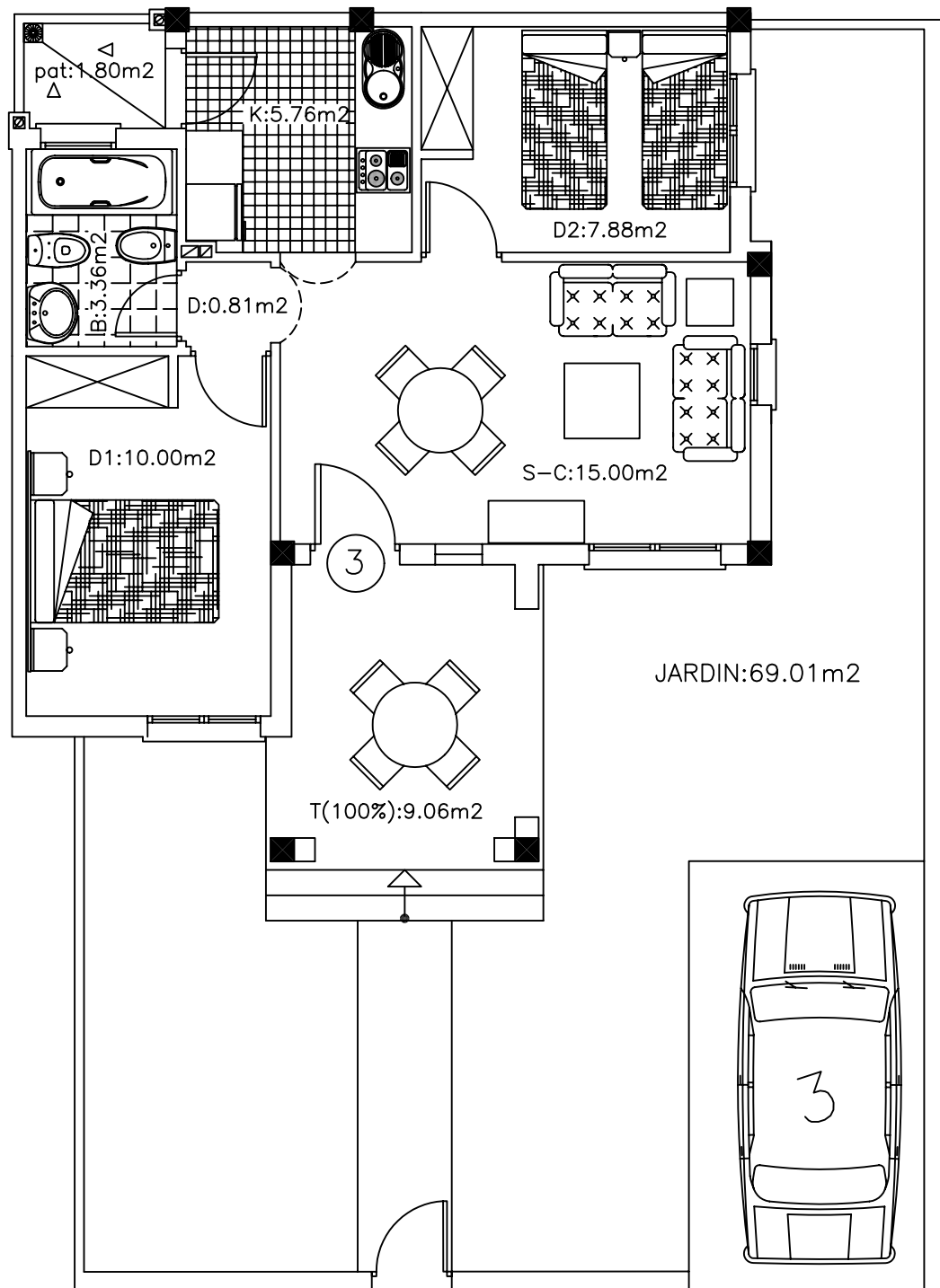


VIVIENDA 2

vivienda = 49.32m²
terrace = 9.06m²
patio = 1.80m²
jardin = 76.29m²

PLANTA BAJA (BLOQUE 1)

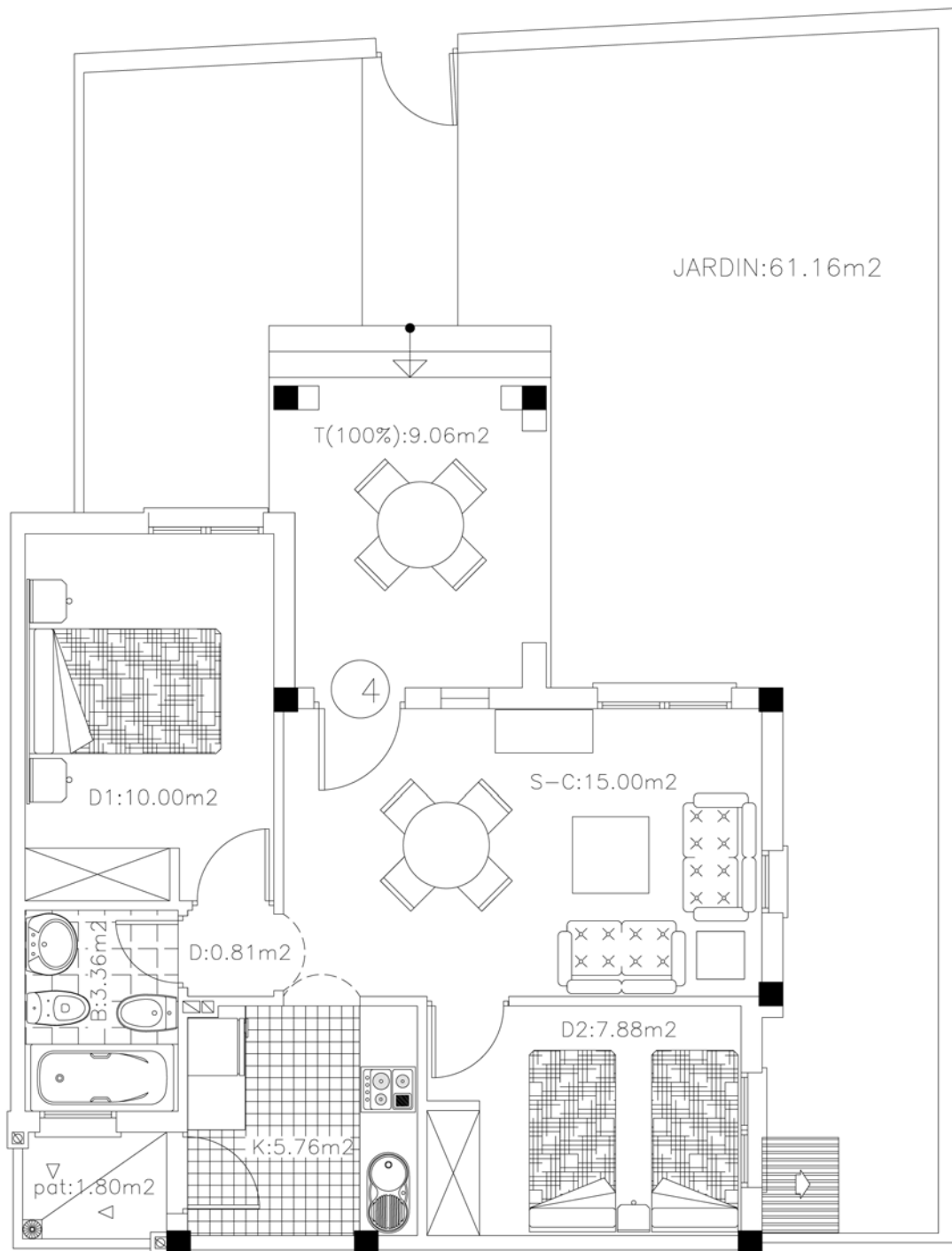
EL BALCON DE LA LAGUNA



Vivienda 3

Vivienda = 49,32 m²
Terraza = 9,06 m²
Patio = 1,80 m²
Jardín = 69,01 m²

EL BALCON DE LA LAGUNA



VIVIENDA 4

vivienda= 49.32m²
terraza = 9.06m²
patio = 1.80m²
jardin= 61.16m²

PLANTA BAJA(BLOQUE 1)

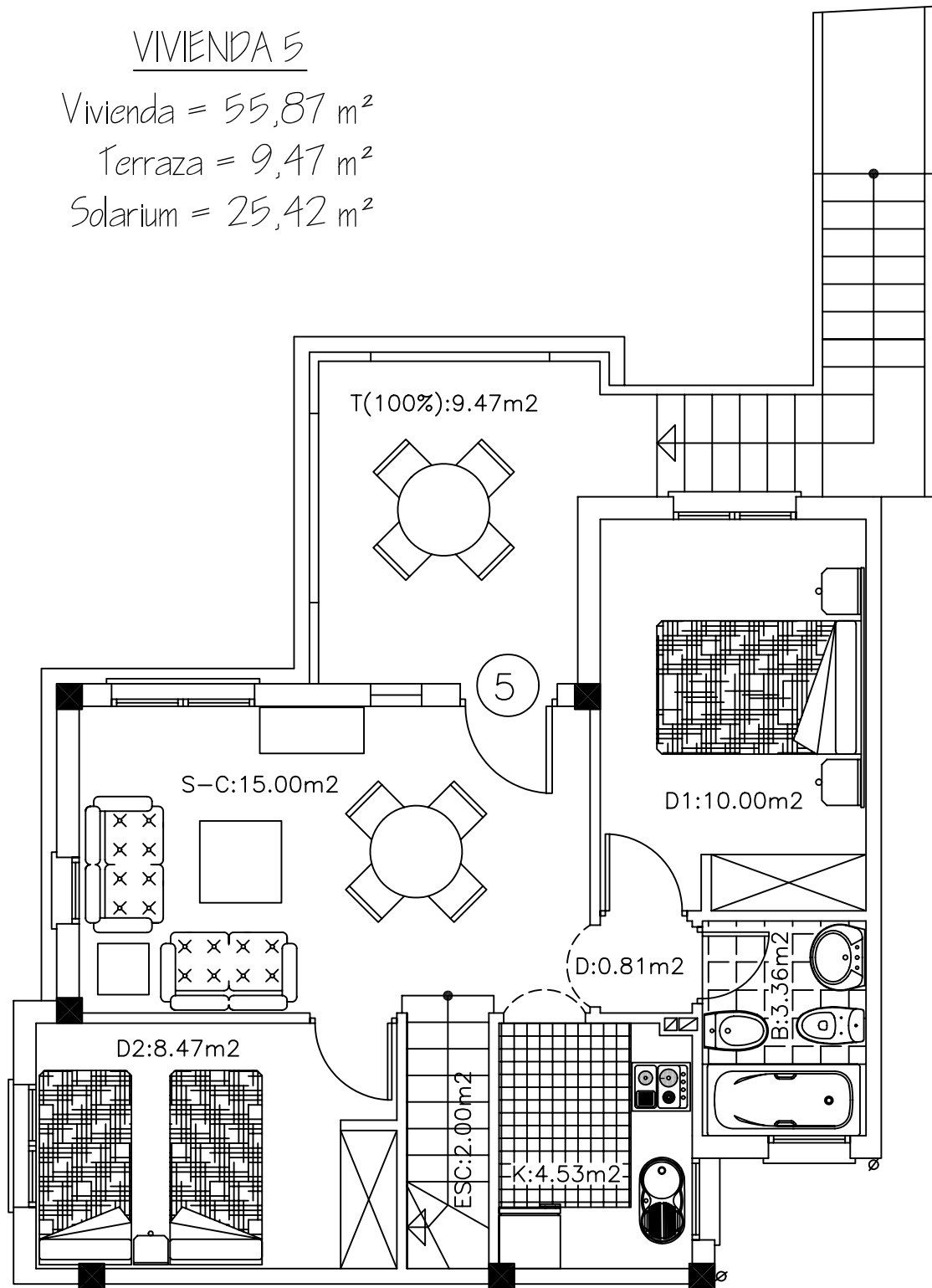
EL BALCON DE LA LAGUNA

VIVIENDA 5

Vivienda = 55,87 m²

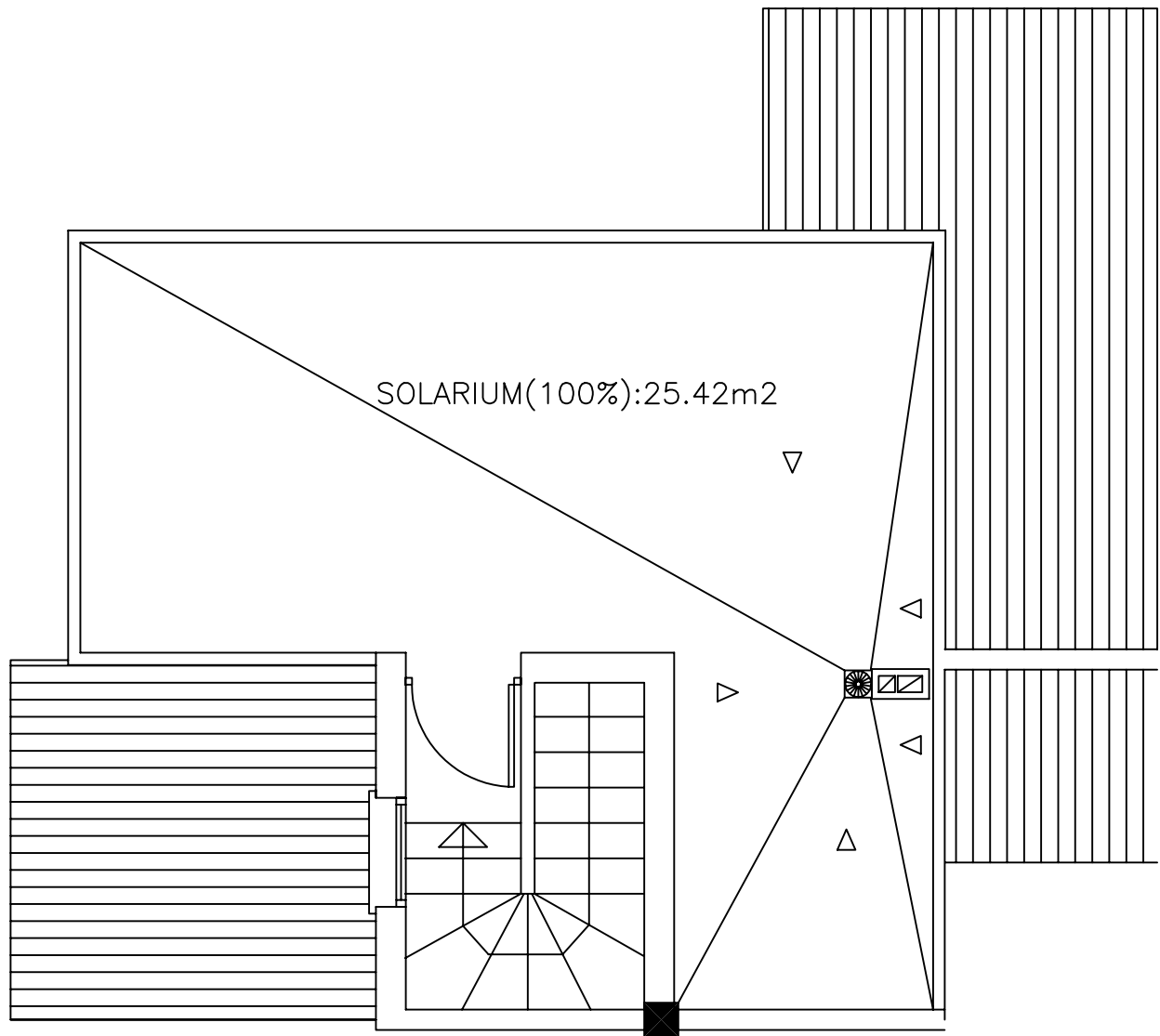
Terraza = 9,47 m²

Solarium = 25,42 m²



PLANTA PRIMERA (BLOQUE 1)

EL BALCON DE LA LAGUNA



VIVIENDA 5

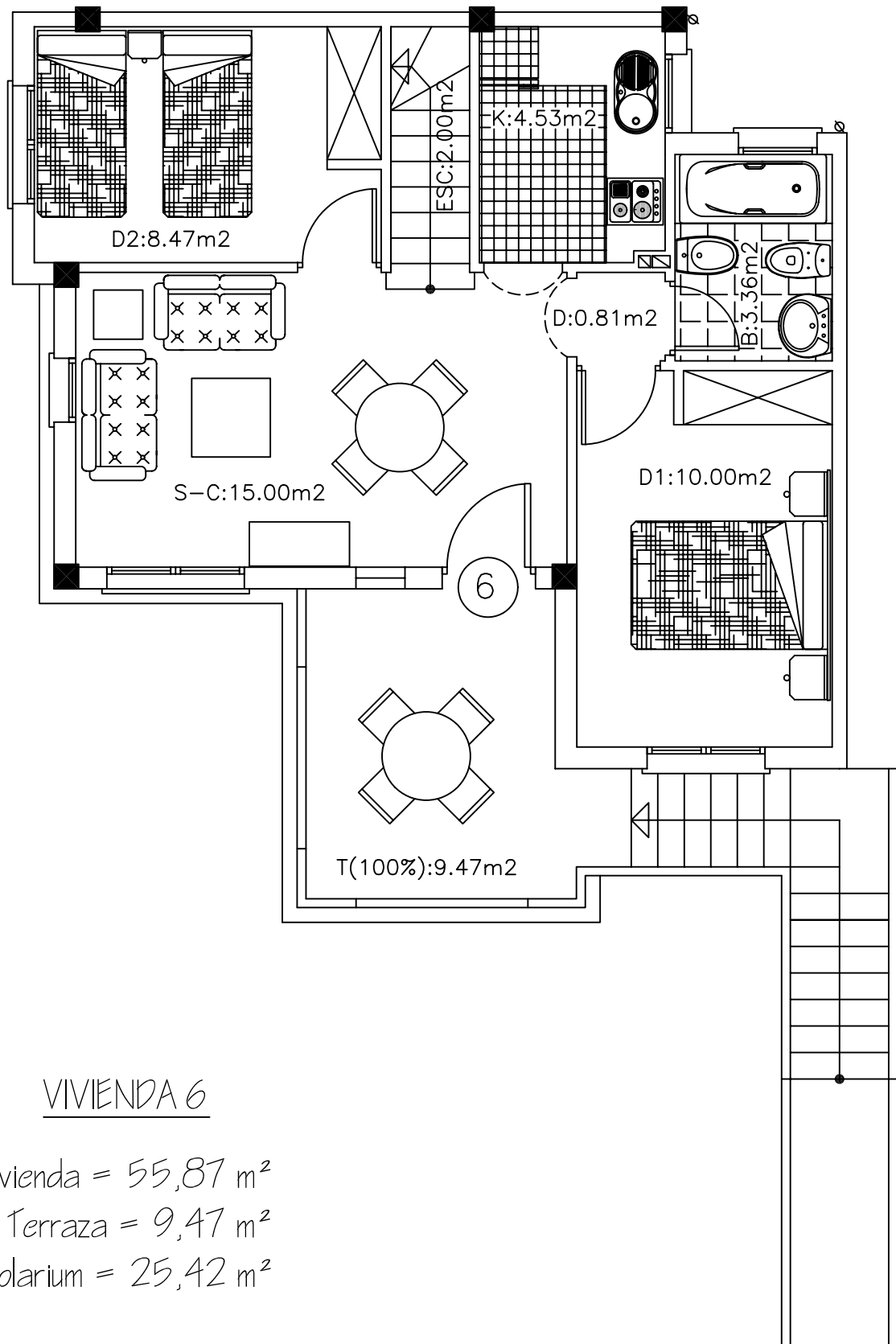
Vivienda = 55,87 m²

Terraza = 9,47 m²

Solarium = 25,42 m²

PLANTA PRIMERA (BLOQUE 1)

EL BALCON DE LA LAGUNA



VIVIENDA 6

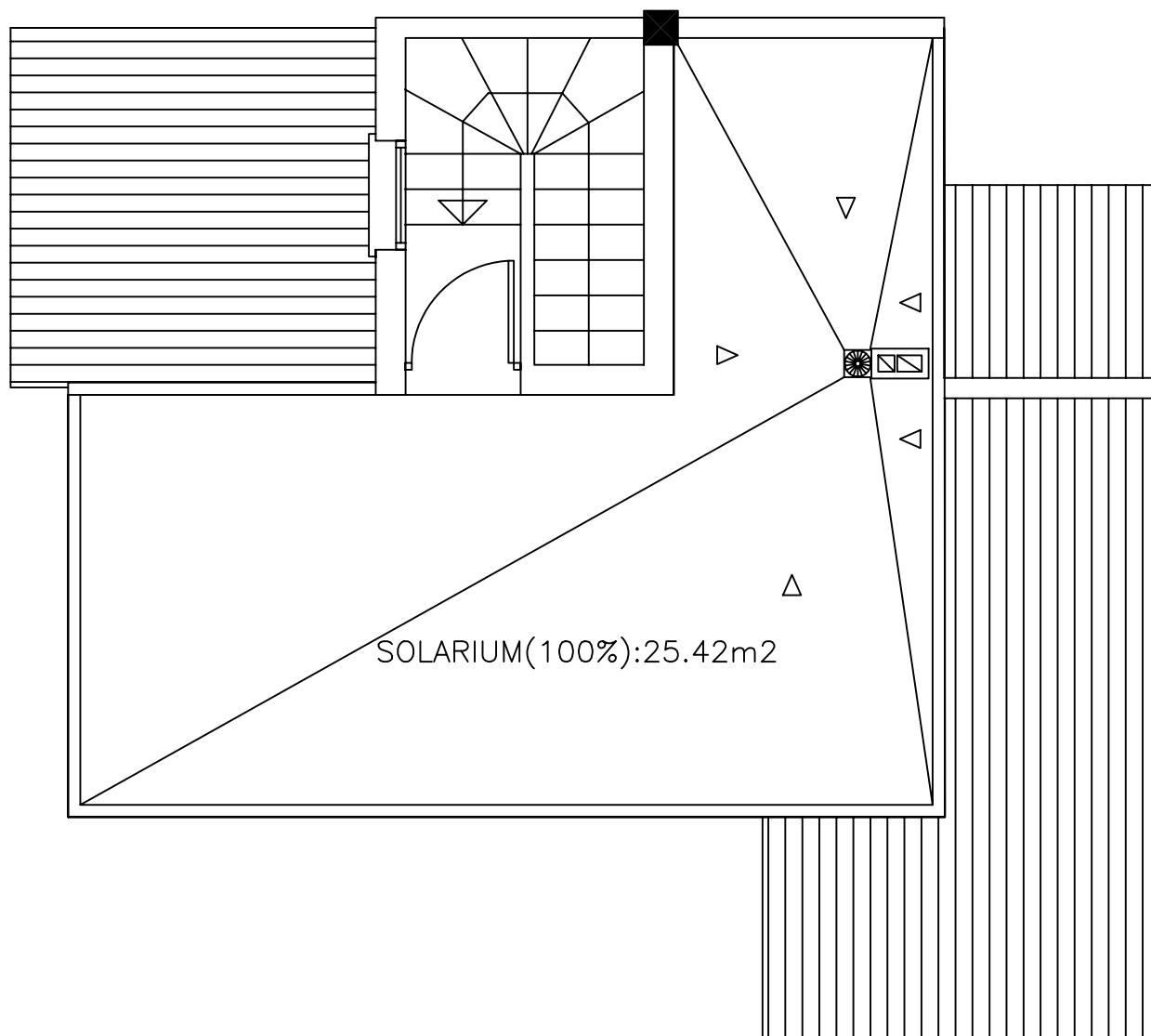
Vivienda = 55,87 m²

Terraza = 9,47 m²

Solarium = 25,42 m²

PLANTA PRIMERA (BLOQUE 1)

EL BALCON DE LA LAGUNA



VIVIENDA 6

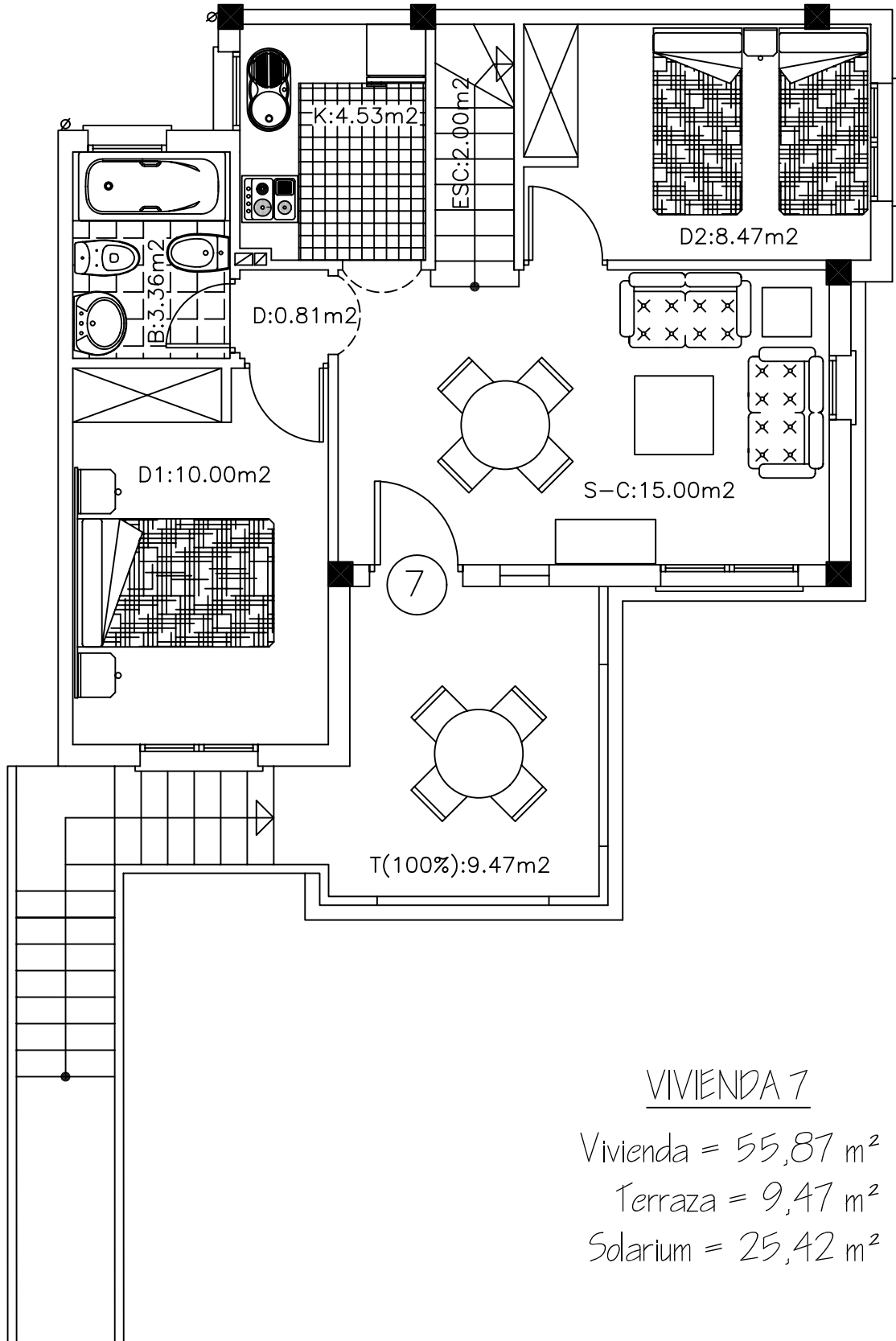
Vivienda = 55,87 m²

Terraza = 9,47 m²

Solarium = 25,42 m²

PLANTA PRIMERA (BLOQUE 1)

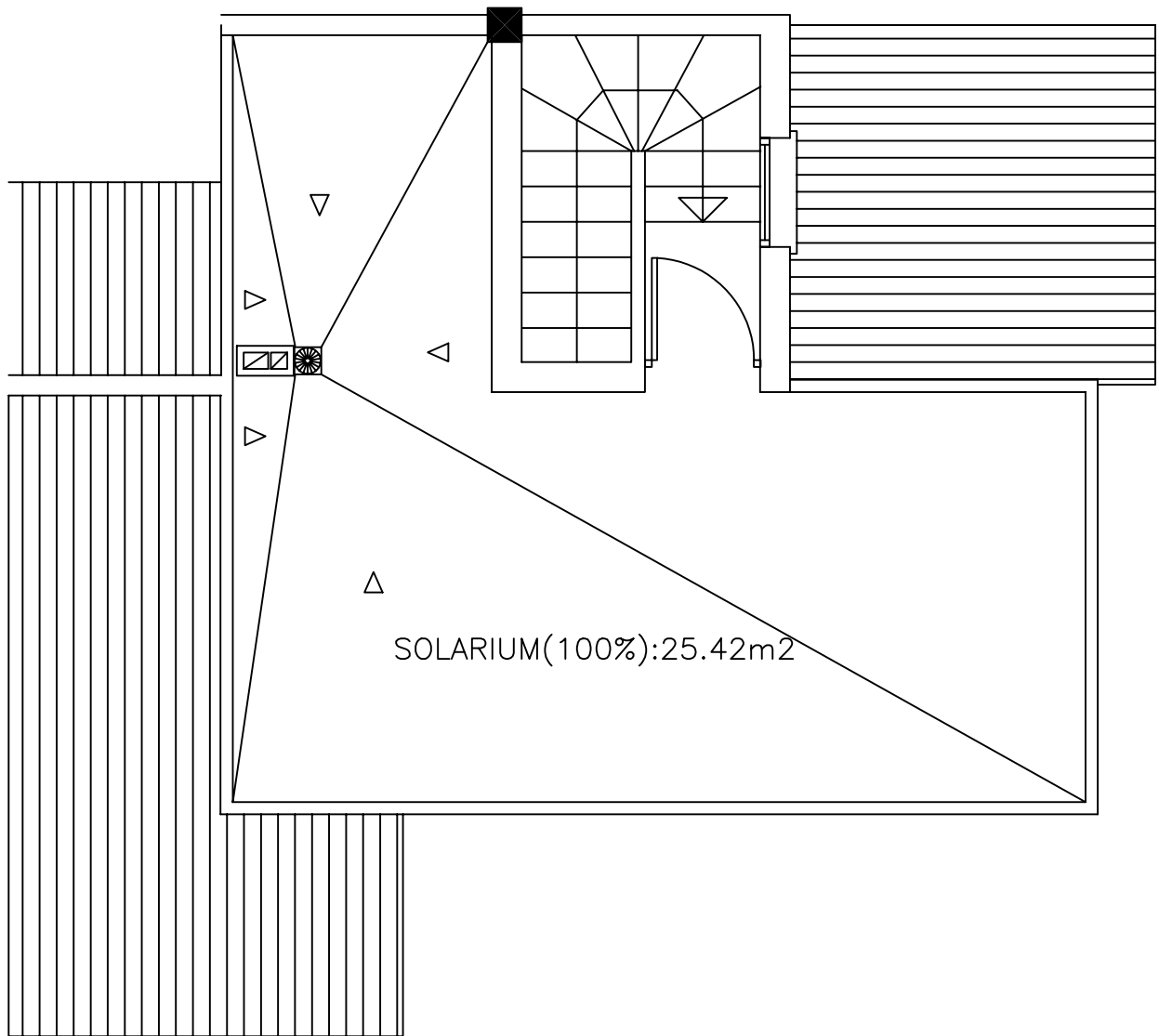
EL BALCON DE LA LAGUNA



VIVIENDA 7

Vivienda = 55,87 m²
Terraza = 9,47 m²
Solarium = 25,42 m²

EL BALCON DE LA LAGUNA



VIVIENDA 7

Vivienda = 55,87 m²

Terraza = 9,47 m²

Solarium = 25,42 m²

PLANTA PRIMERA (BLOQUE 1)

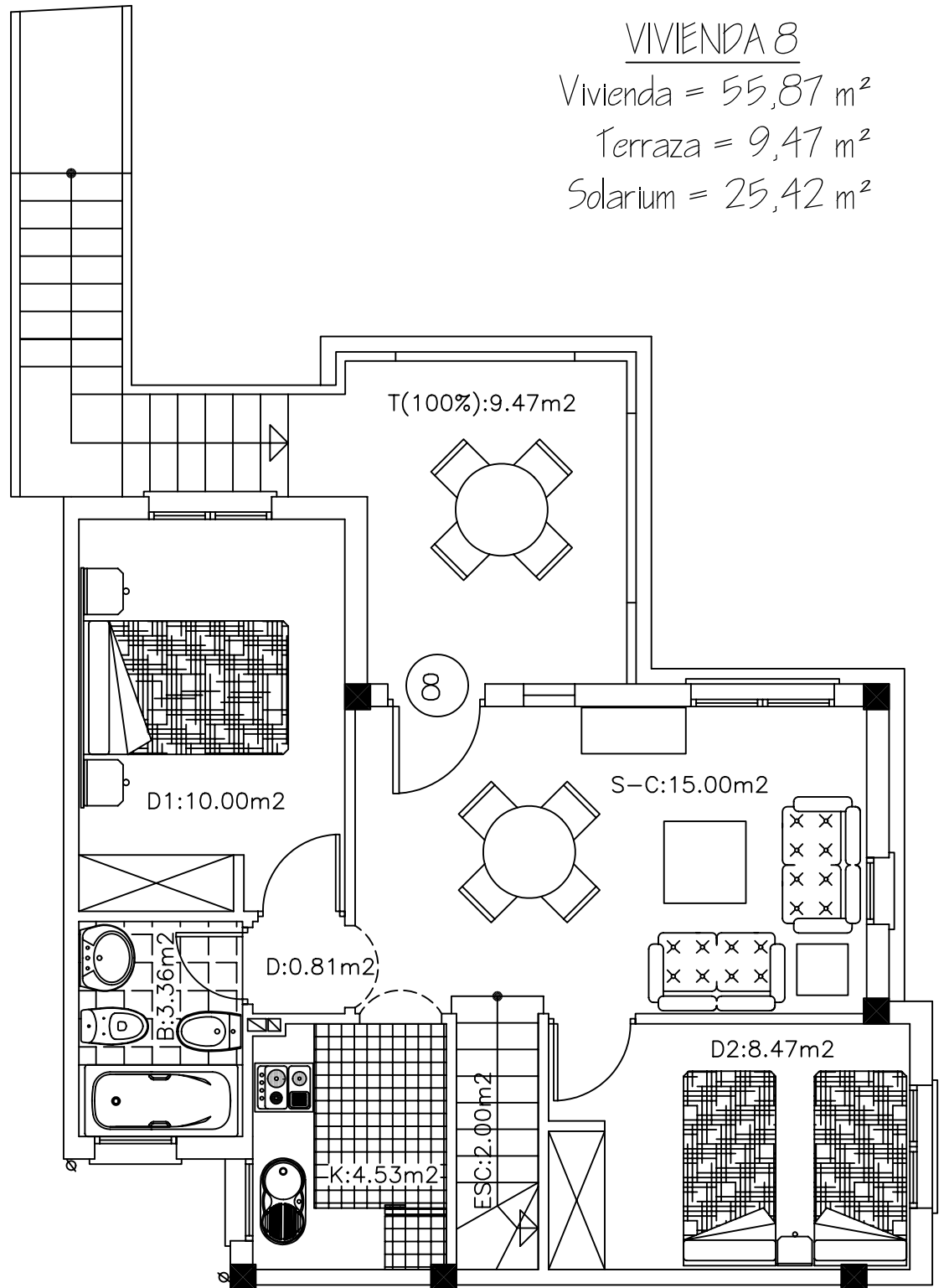
EL BALCON DE LA LAGUNA

VIVIENDA 8

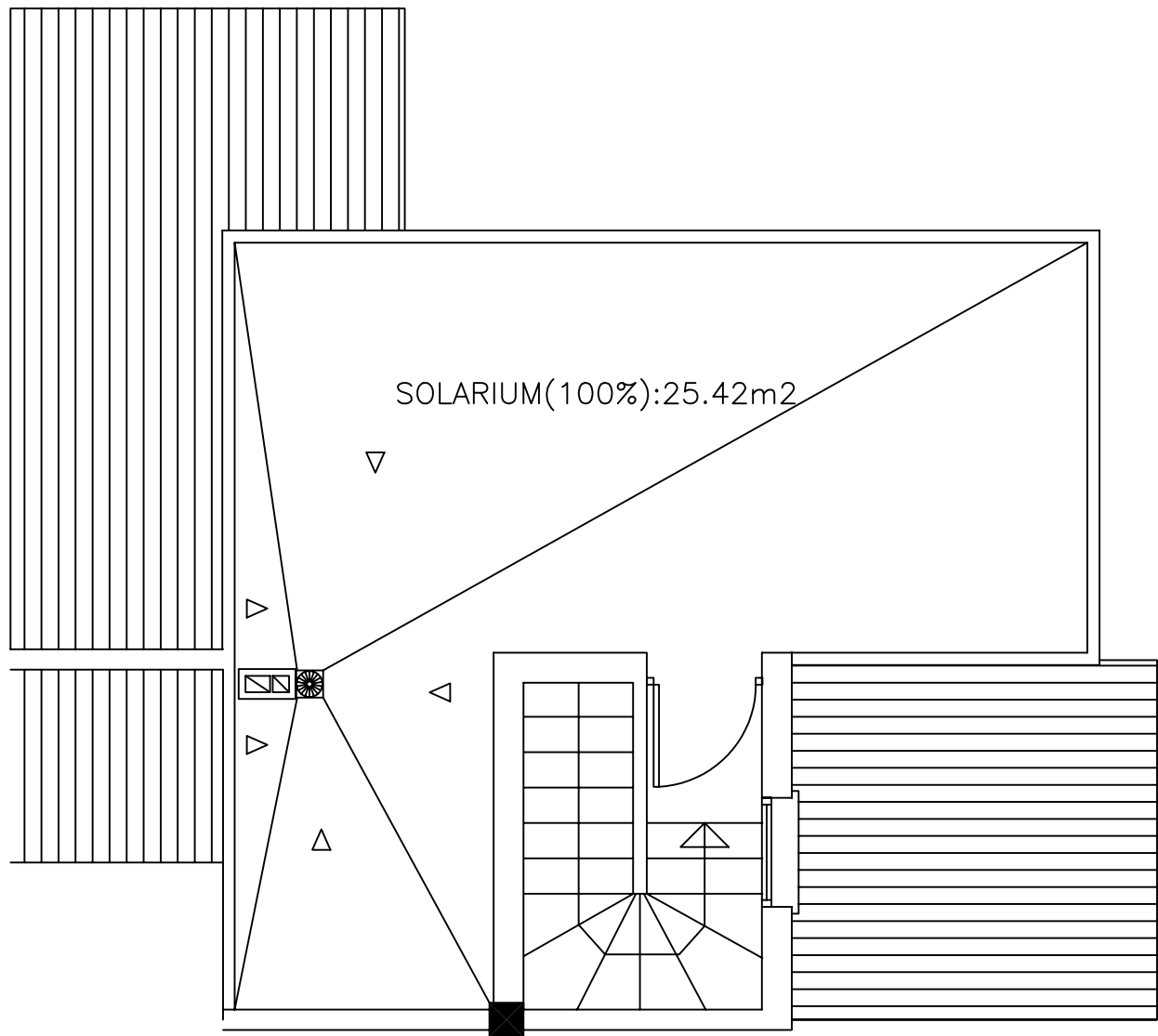
Vivienda = 55,87 m²

Terraza = 9,47 m²

Solarium = 25,42 m²



EL BALCON DE LA LAGUNA



VIVIENDA 8

Vivienda = 55,87 m²

Terraza = 9,47 m²

Solarium = 25,42 m²

PLANTA PRIMERA (BLOQUE 1)

Vivienda 9

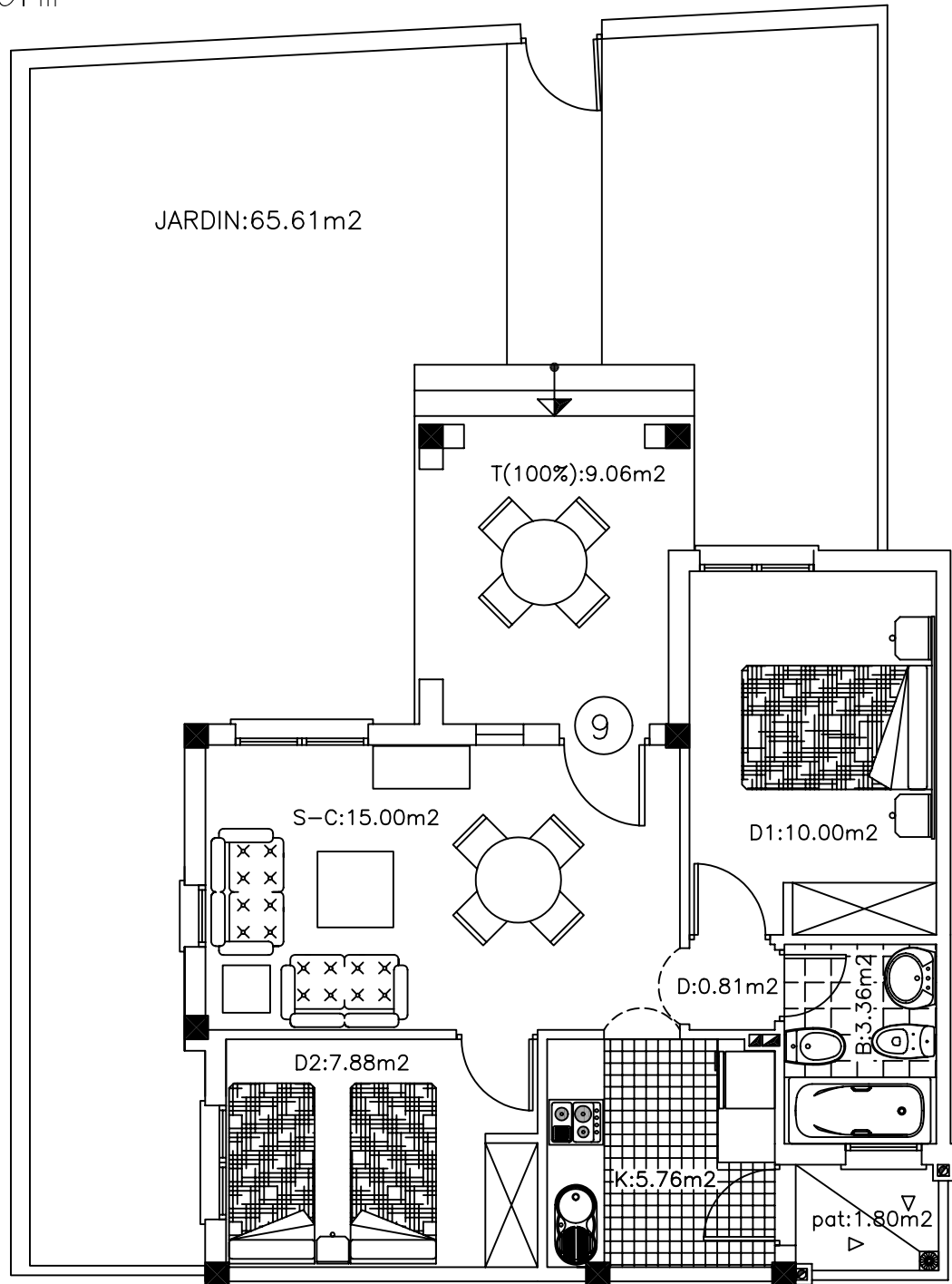
EL BALCON DE LA LAGUNA

Vivienda = 49,32 m²

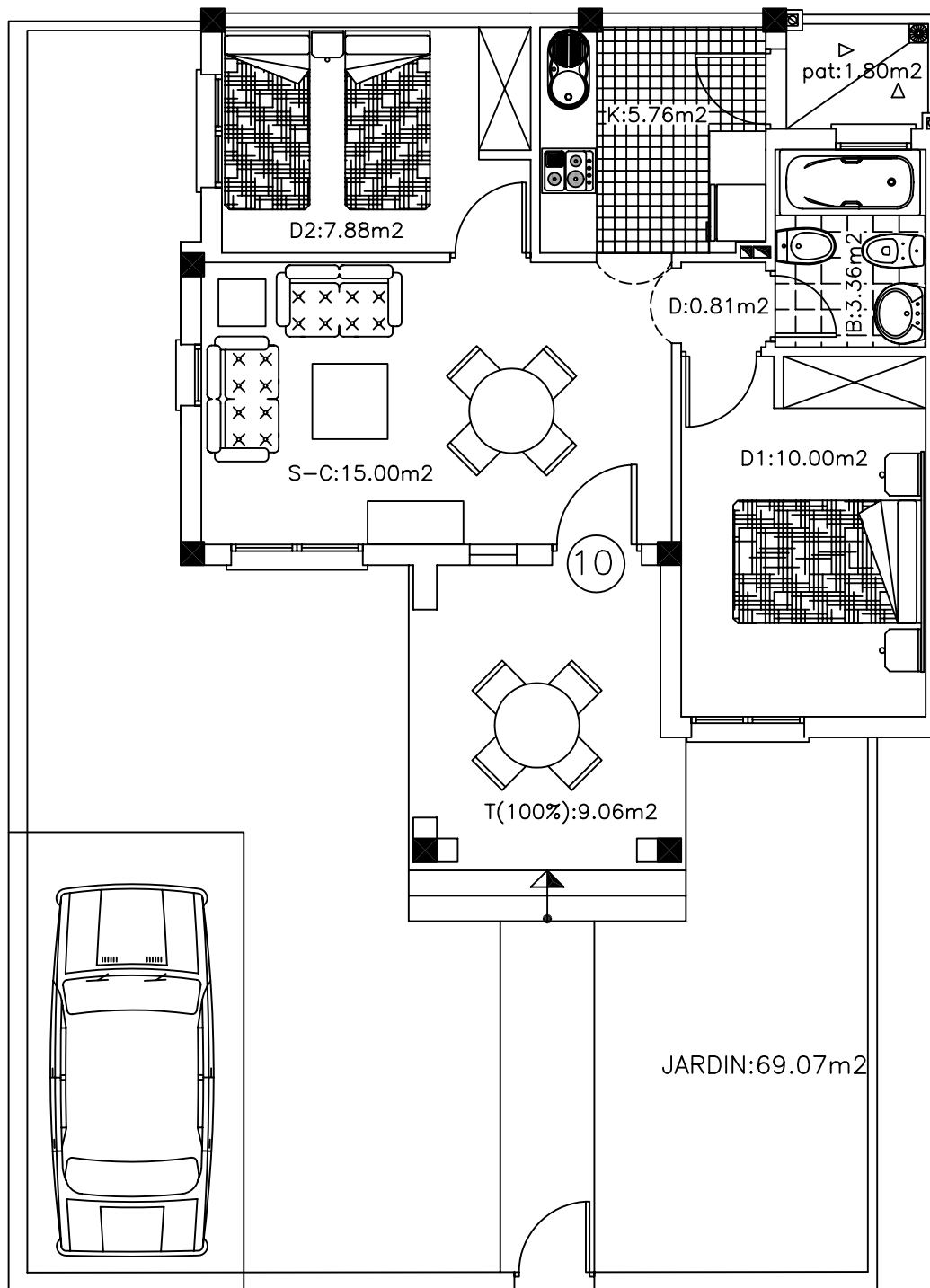
Terraza = 9,06 m²

Patio = 1,80 m²

Jardín = 65,61 m²



EL BALCON DE LA LAGUNA



Vivienda 10

Vivienda = 49,32 m²

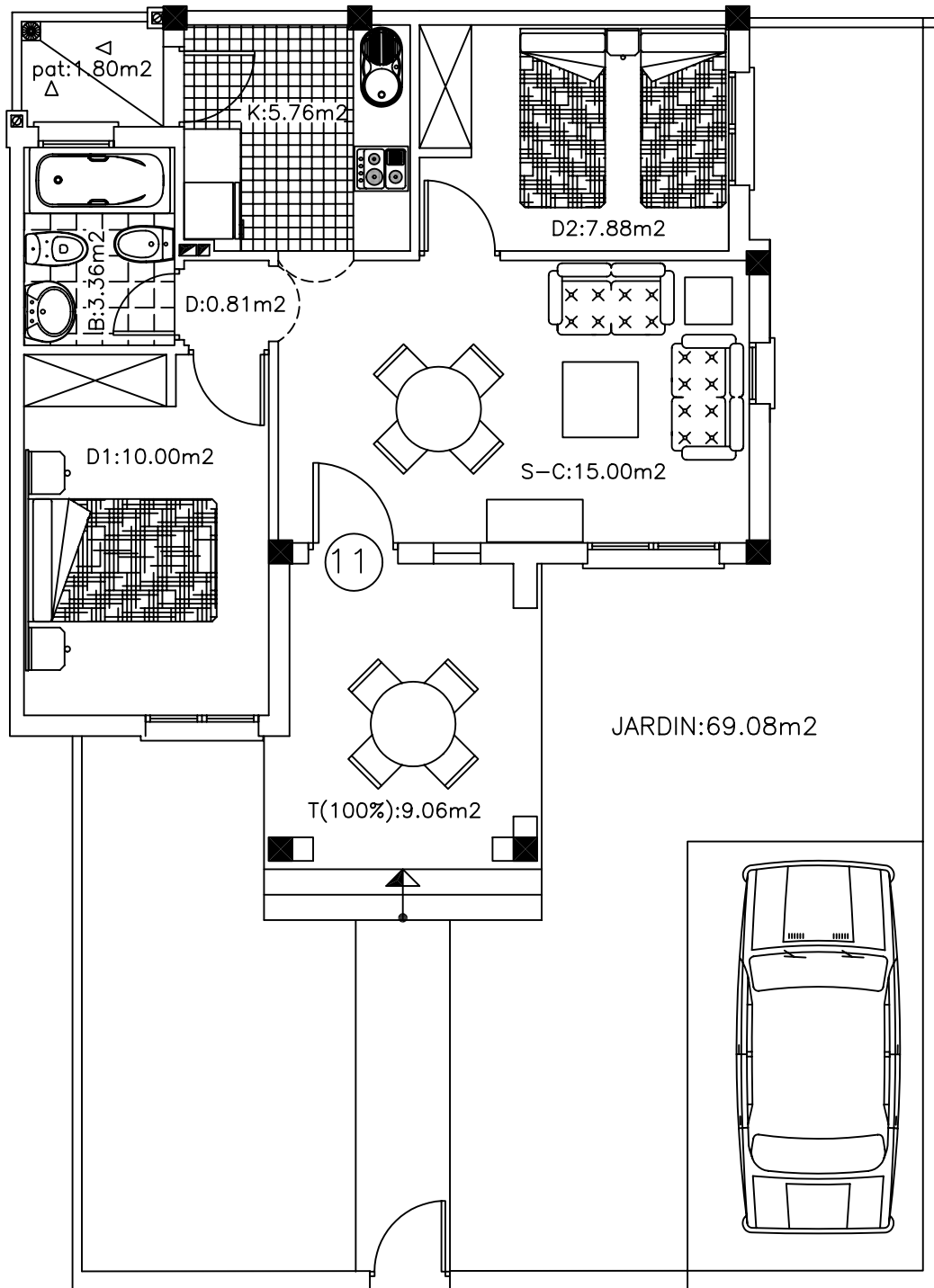
Terraza = 9,06 m²

Patio = 1,80 m²

Jardín = 69,07 m²

PLANTA BAJA (BLOQUE 2)

EL BALCON DE LA LAGUNA



Vivienda II

Vivienda = 49,32 m²

Terraza = 9,06 m²

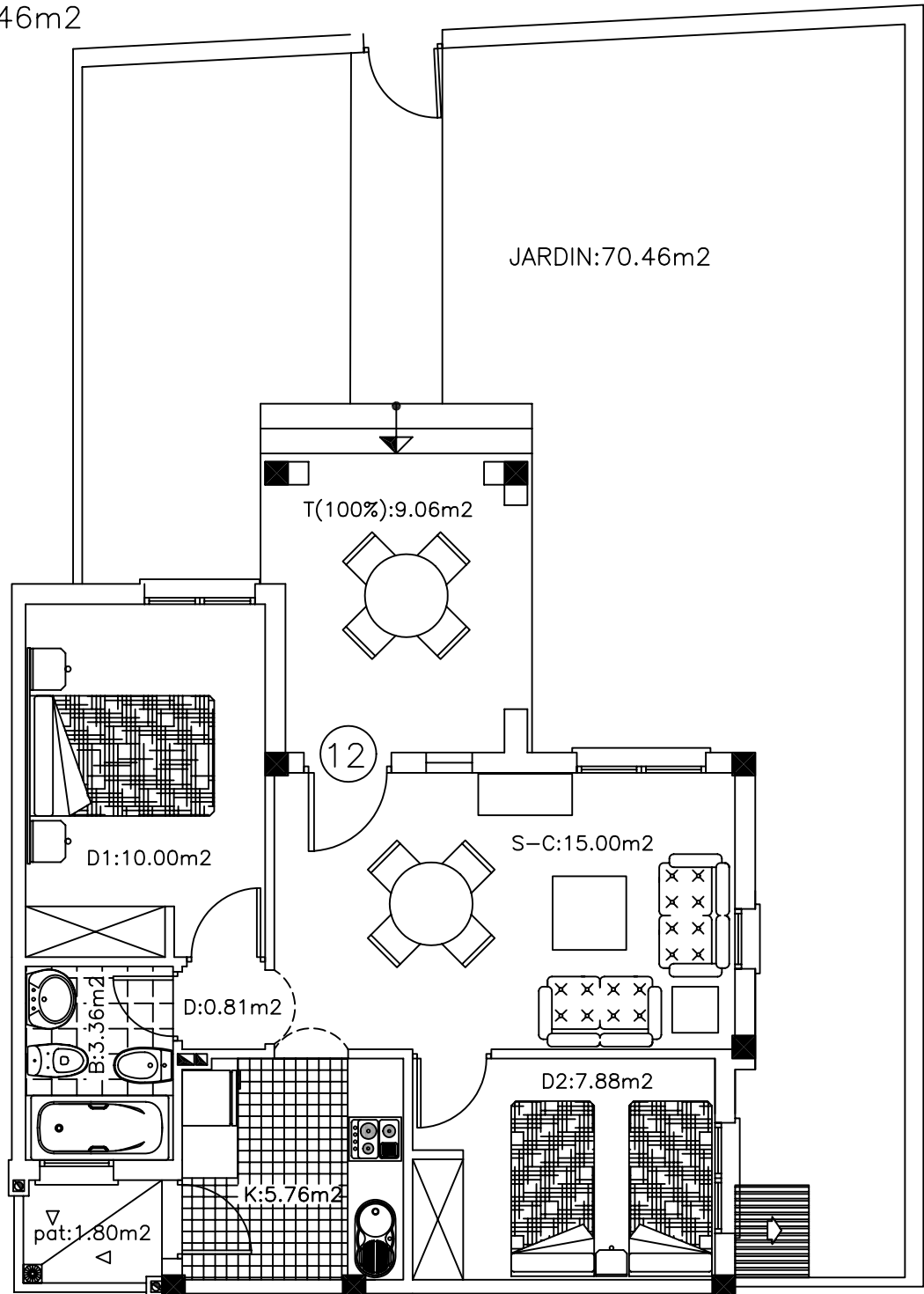
Patio = 1,80 m²

Jardín = 69,08 m²

EL BALCON DE LA LAGUNA

VIVIENDA 12

vivienda= 49.32m²
terraza = 9.06m²
patio = 1.80m²
jardin= 70.46m²



PLANTA BAJA(BLOQUE 2)

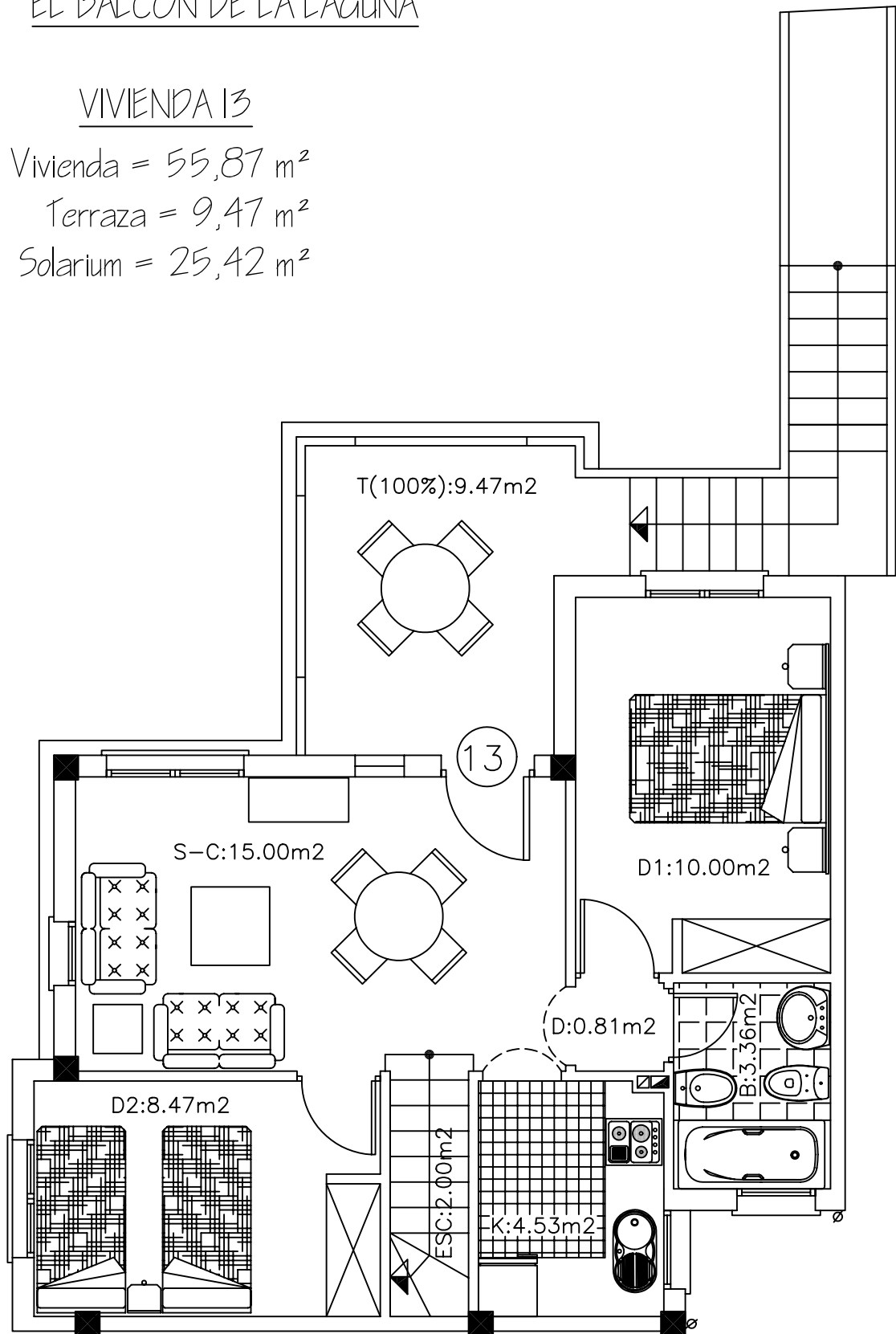
EL BALCON DE LA LAGUNA

VIVIENDA 13

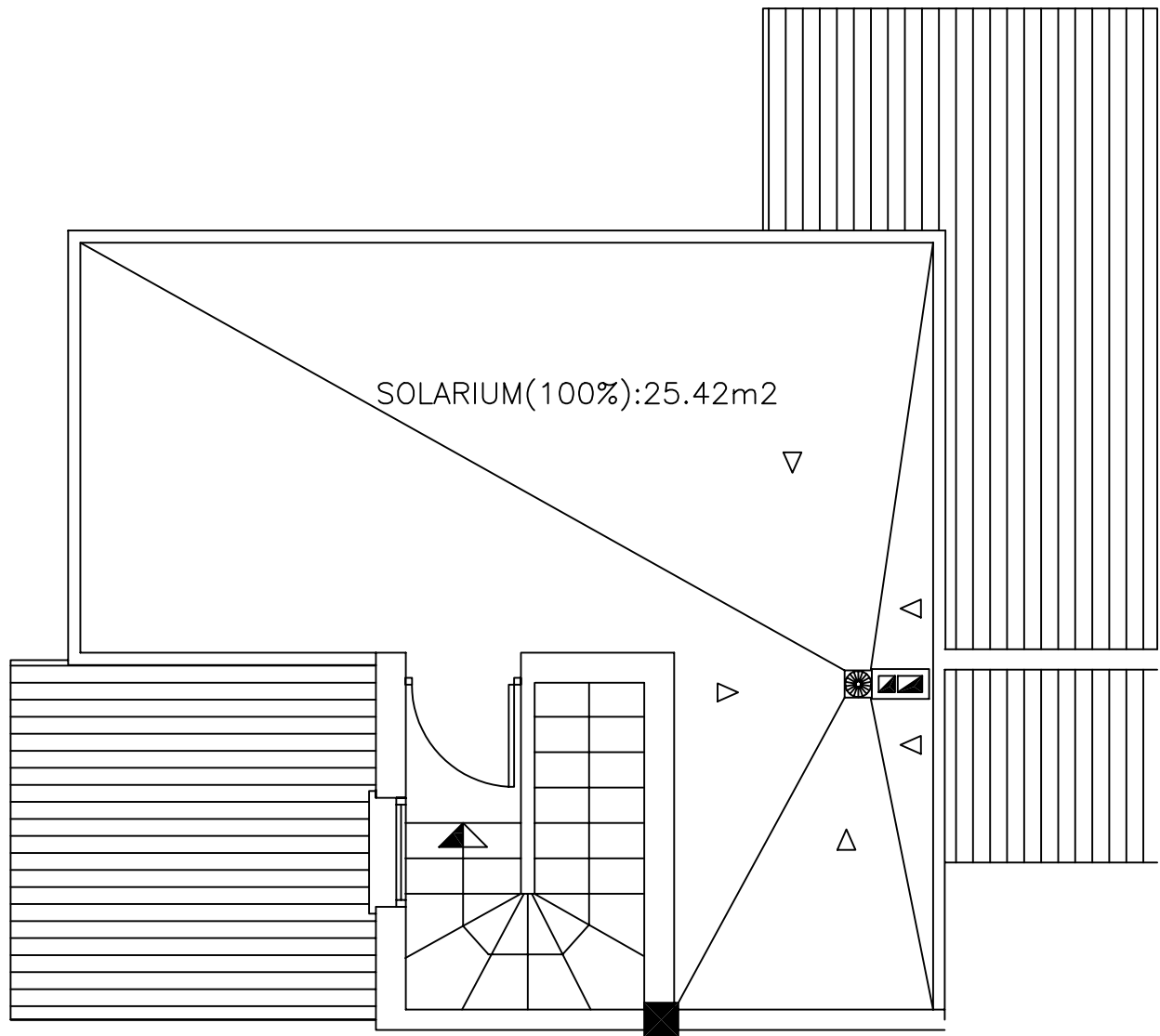
Vivienda = 55,87 m²

Terraza = 9,47 m²

Solarium = 25,42 m²



EL BALCON DE LA LAGUNA



VIVIENDA 13

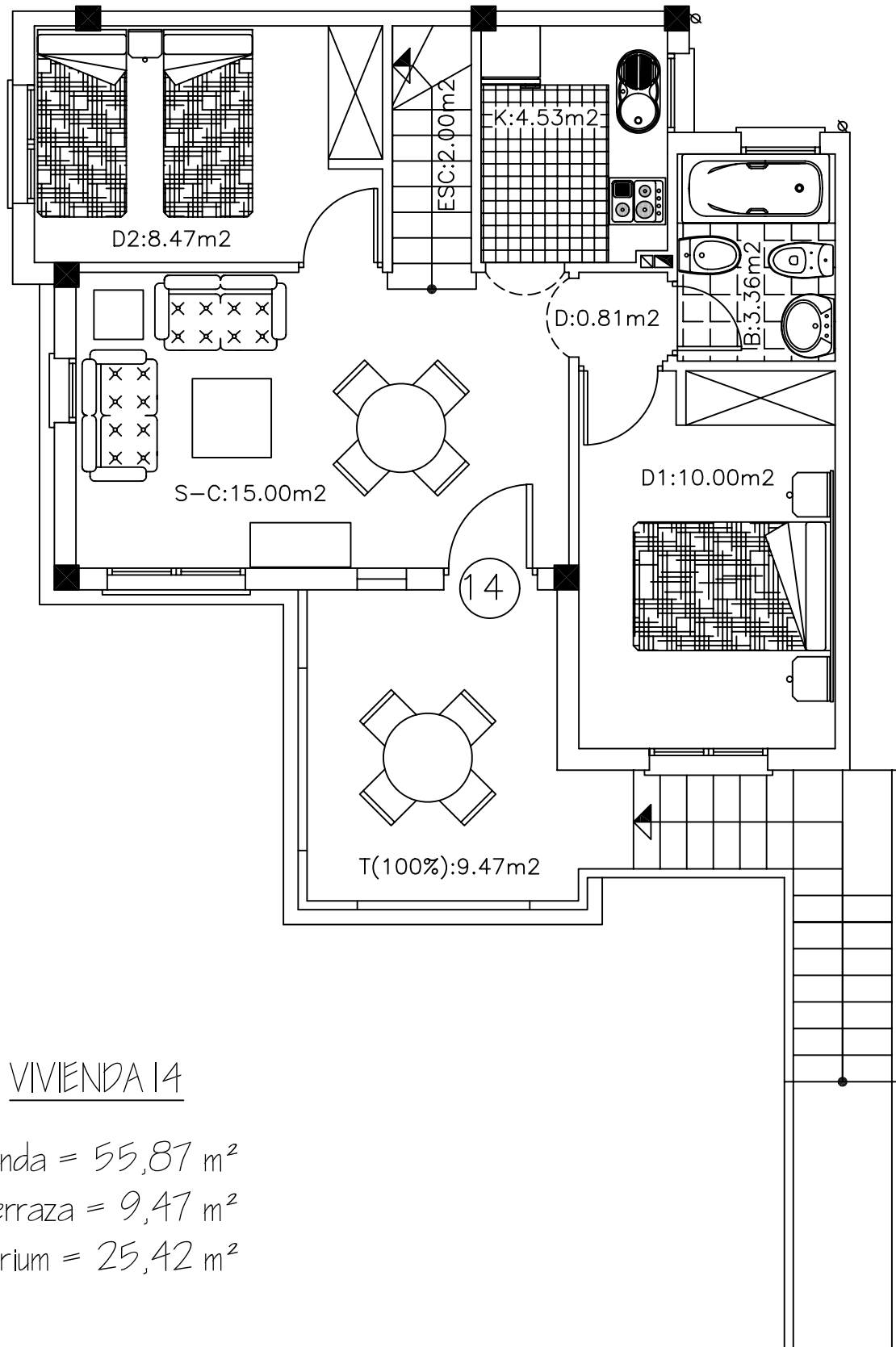
Vivienda = 55,87 m²

Terraza = 9,47 m²

Solarium = 25,42 m²

PLANTA PRIMERA (BLOQUE 2)

EL BALCON DE LA LAGUNA



VIVIENDA 14

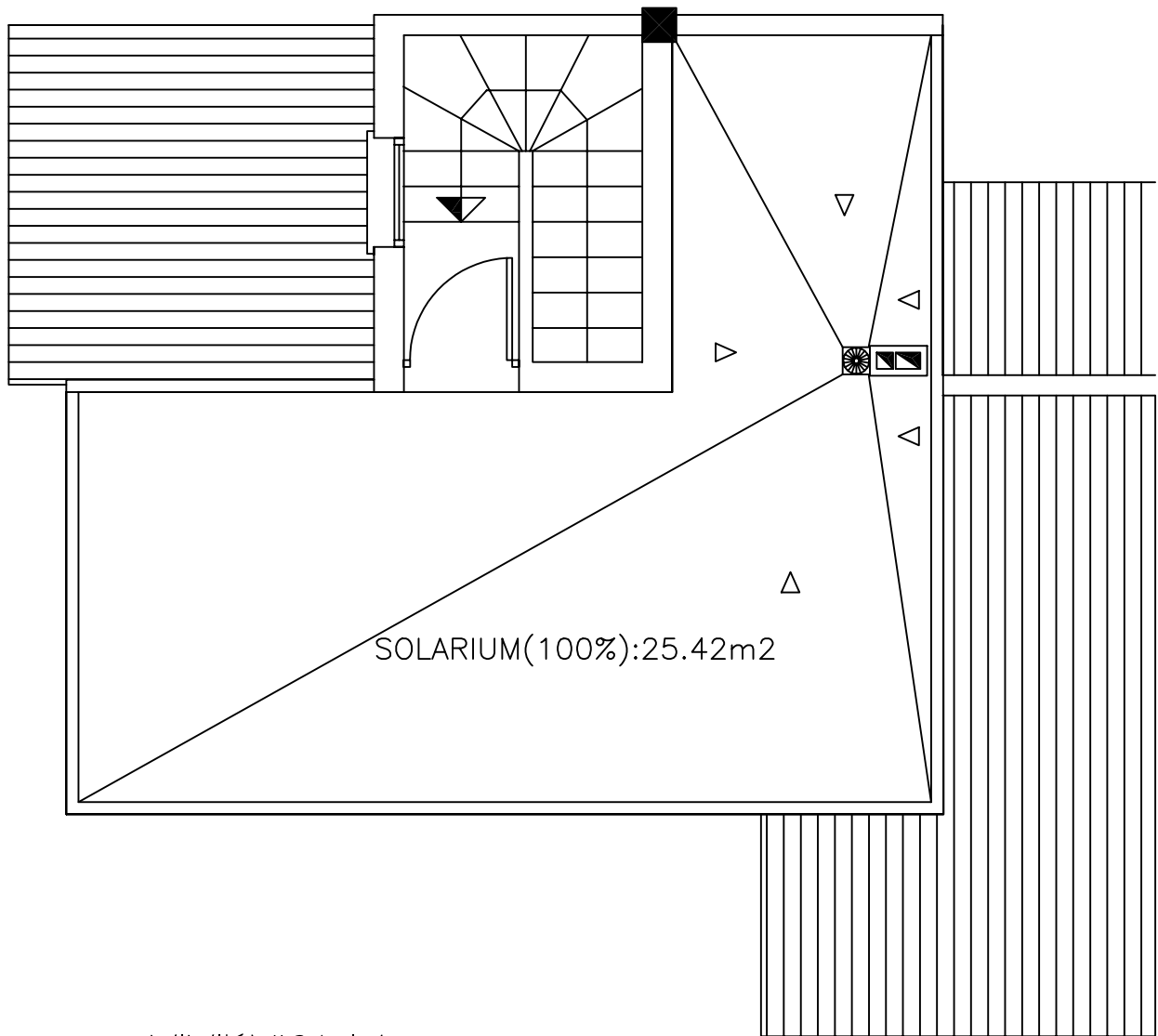
Vivienda = 55,87 m²

Terraza = 9,47 m²

Solarium = 25,42 m²

PLANTA PRIMERA (BLOQUE 2)

EL BALCON DE LA LAGUNA



VIVIENDA 14

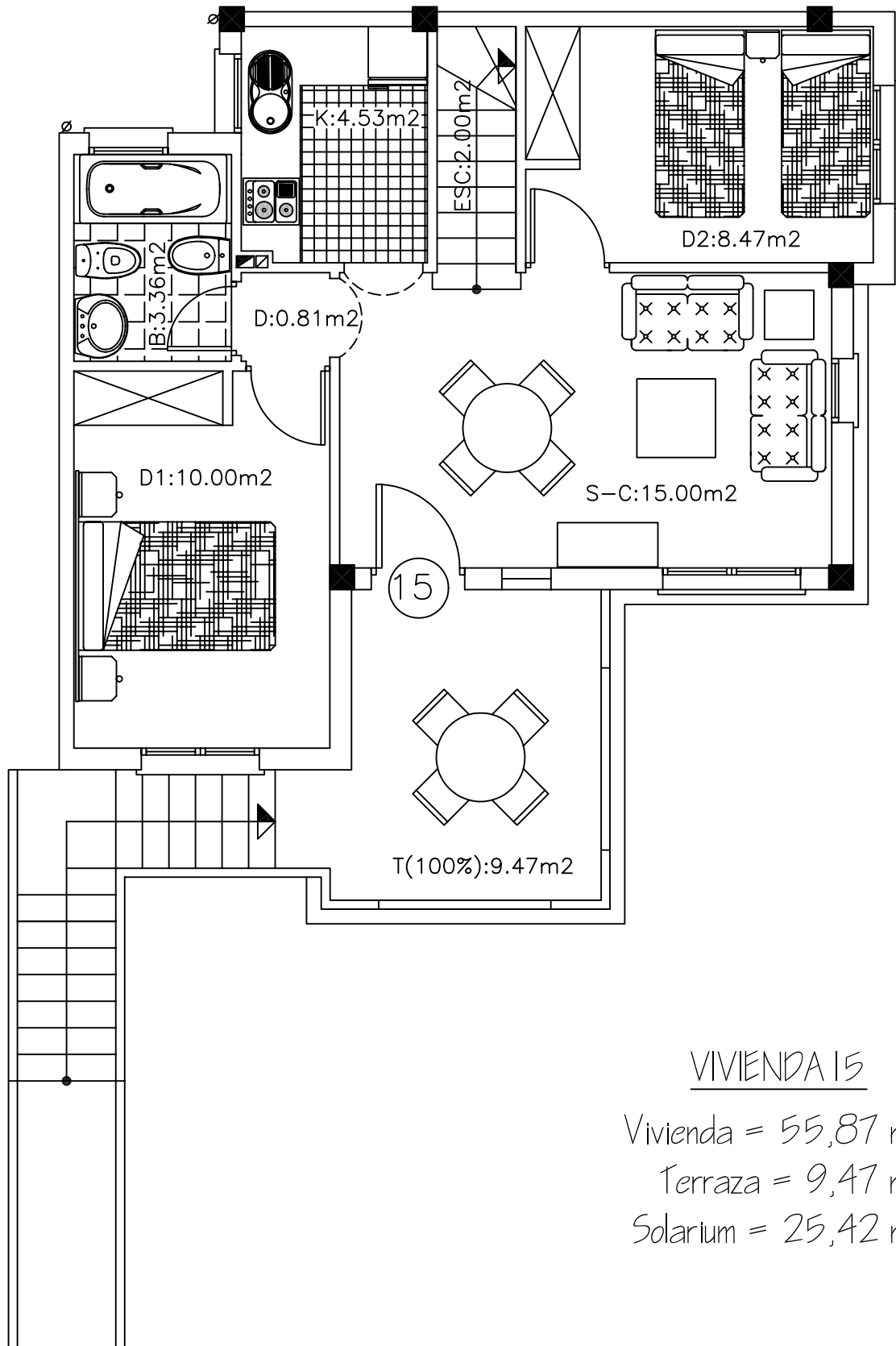
Vivienda = 55,87 m²

Terraza = 9,47 m²

Solarium = 25,42 m²

PLANTA PRIMERA (BLOQUE 2)

EL BALCON DE LA LAGUNA



VIVIENDA 15

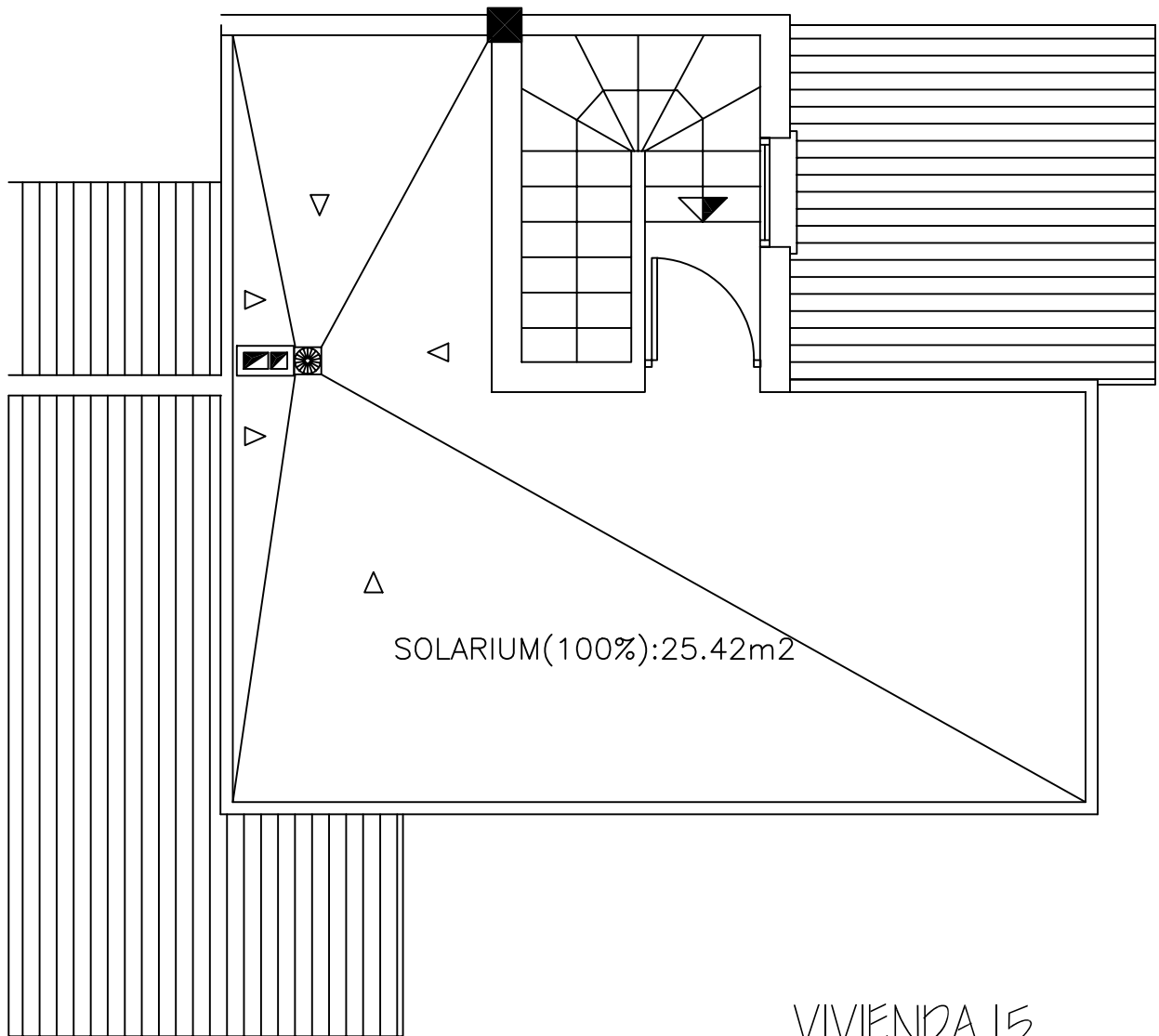
Vivienda = 55,87 m²

Terraza = 9,47 m²

Solarium = 25,42 m²

PLANTA PRIMERA (BLOQUE 2)

EL BALCON DE LA LAGUNA



VIVIENDA 15

Vivienda = 55,87 m²

Terraza = 9,47 m²

Solarium = 25,42 m²

PLANTA PRIMERA (BLOQUE 2)

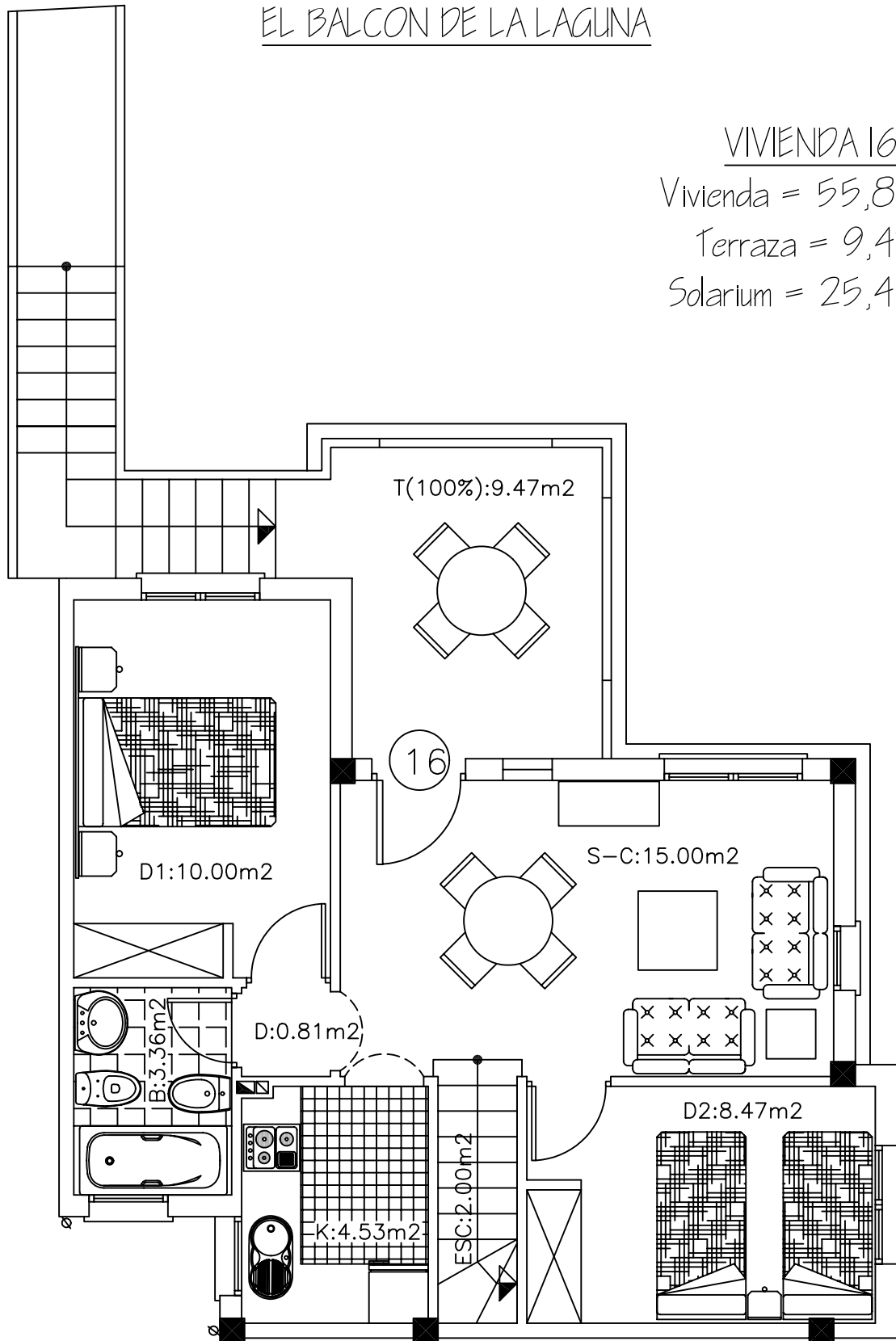
EL BALCON DE LA LAGUNA

VIVIENDA 16

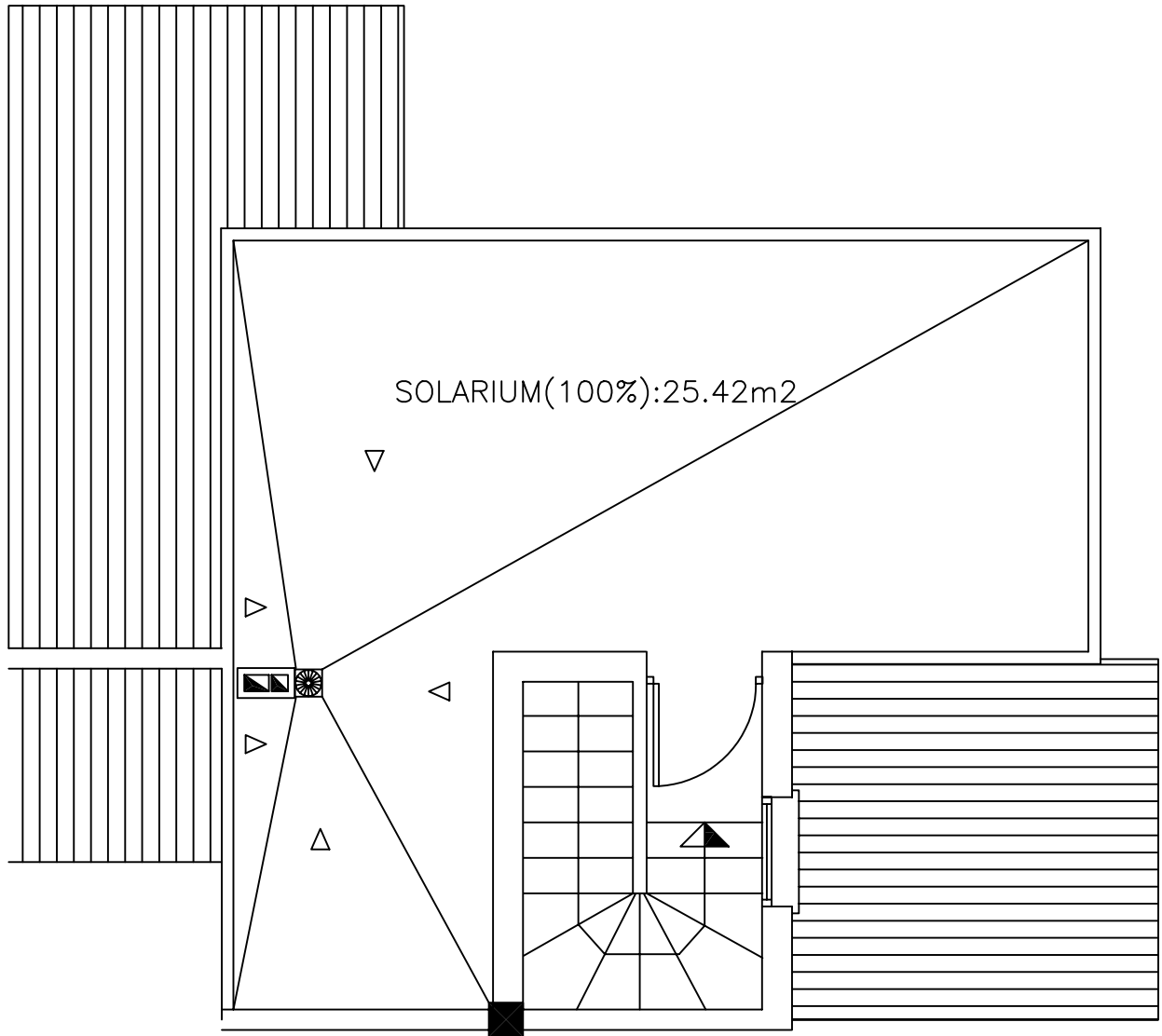
Vivienda = 55,87 m²

Terraza = 9,47 m²

Solarium = 25,42 m²



EL BALCON DE LA LAGUNA



VIVIENDA 16

Vivienda = 55,87 m²

Terraza = 9,47 m²

Solarium = 25,42 m²

PLANTA PRIMERA (BLOQUE 2)

EL BALCON DE LA LAGUNA

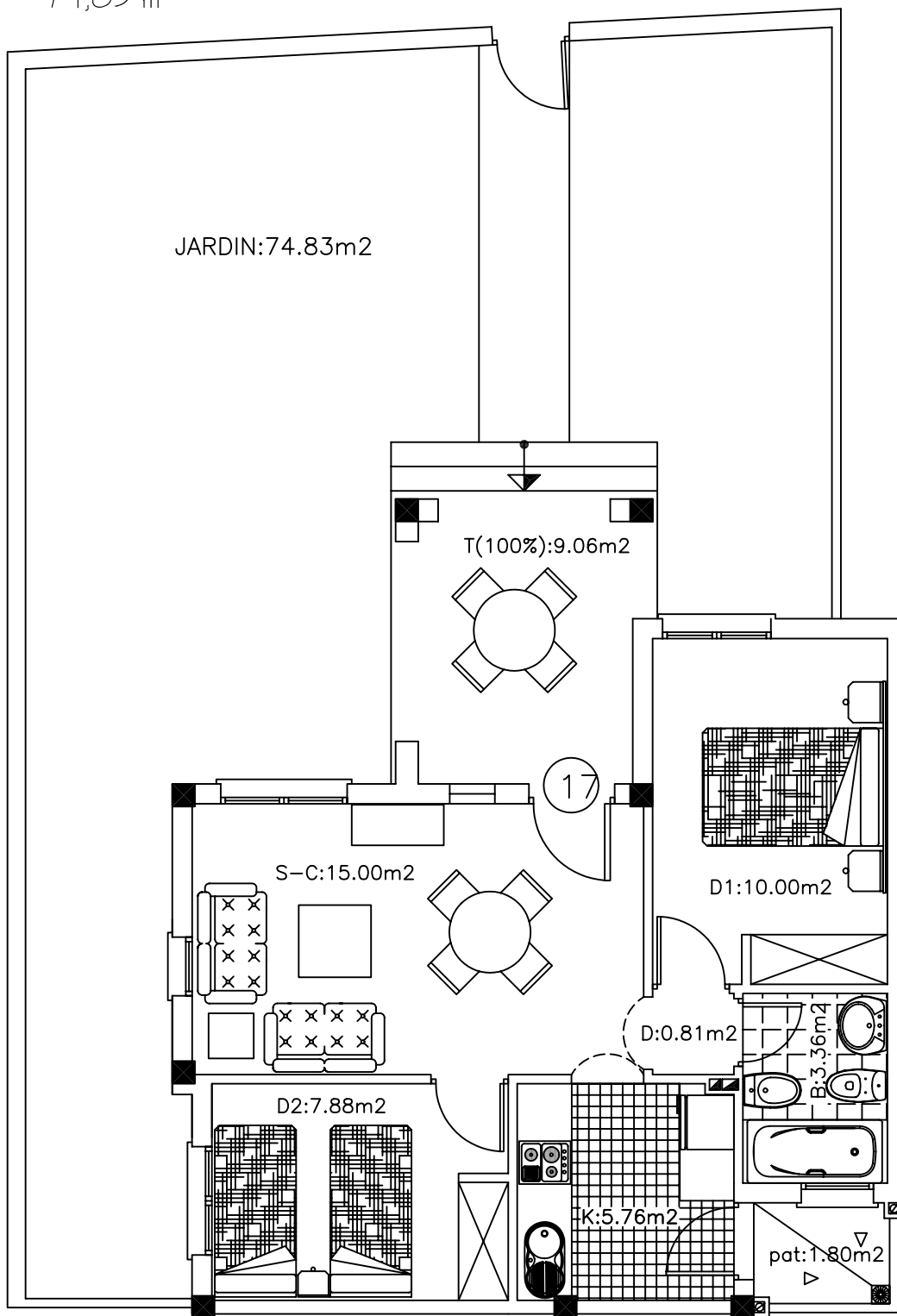
Vivienda 17

Vivienda = 49,32 m²

Terraza = 9,06 m²

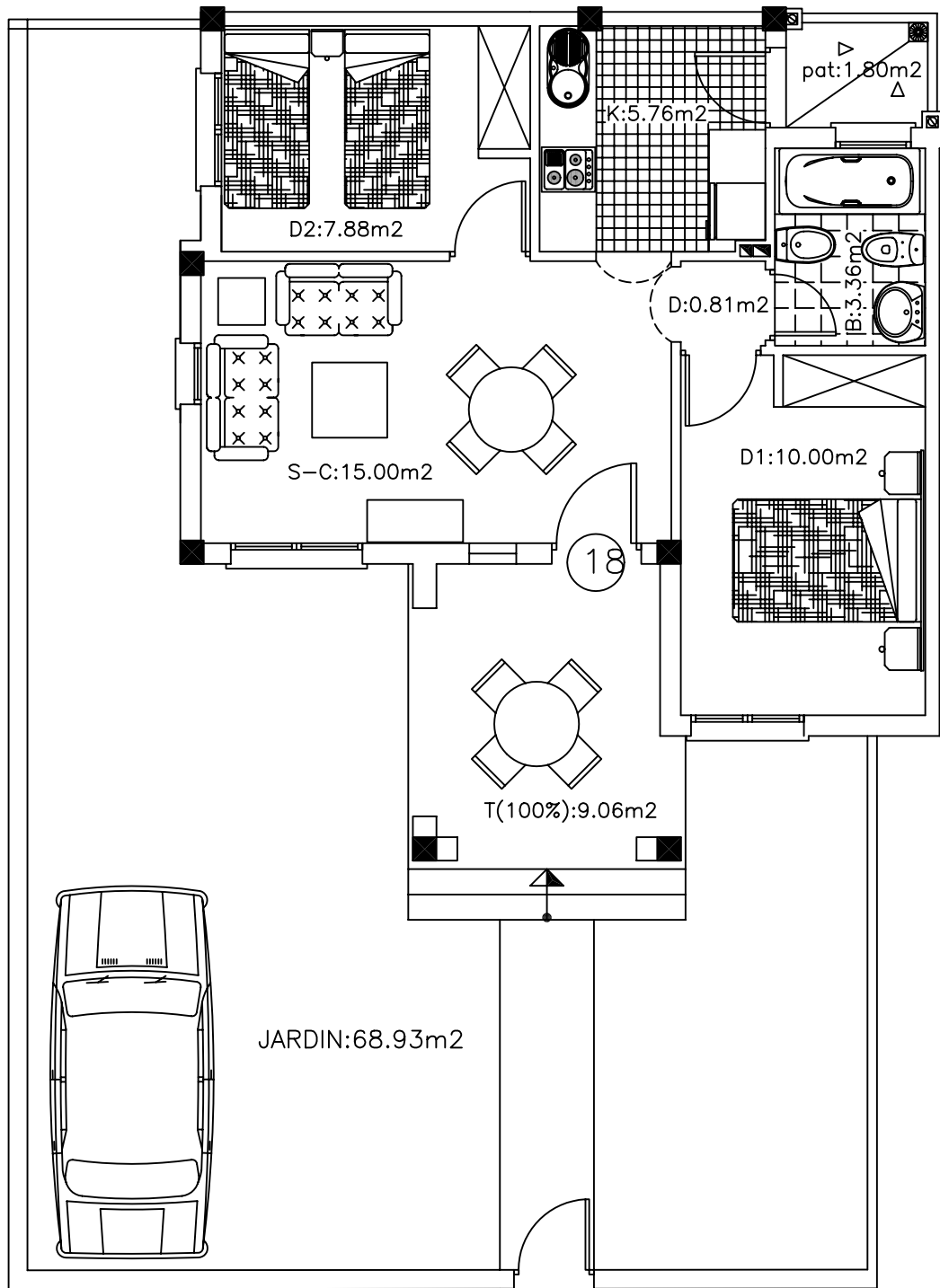
Patio = 1,80 m²

Jardín = 74,83 m²



PLANTA BAJA (BLOQUE 3)

EL BALCON DE LA LAGUNA



Vivienda 18

Vivienda = 49,32 m²

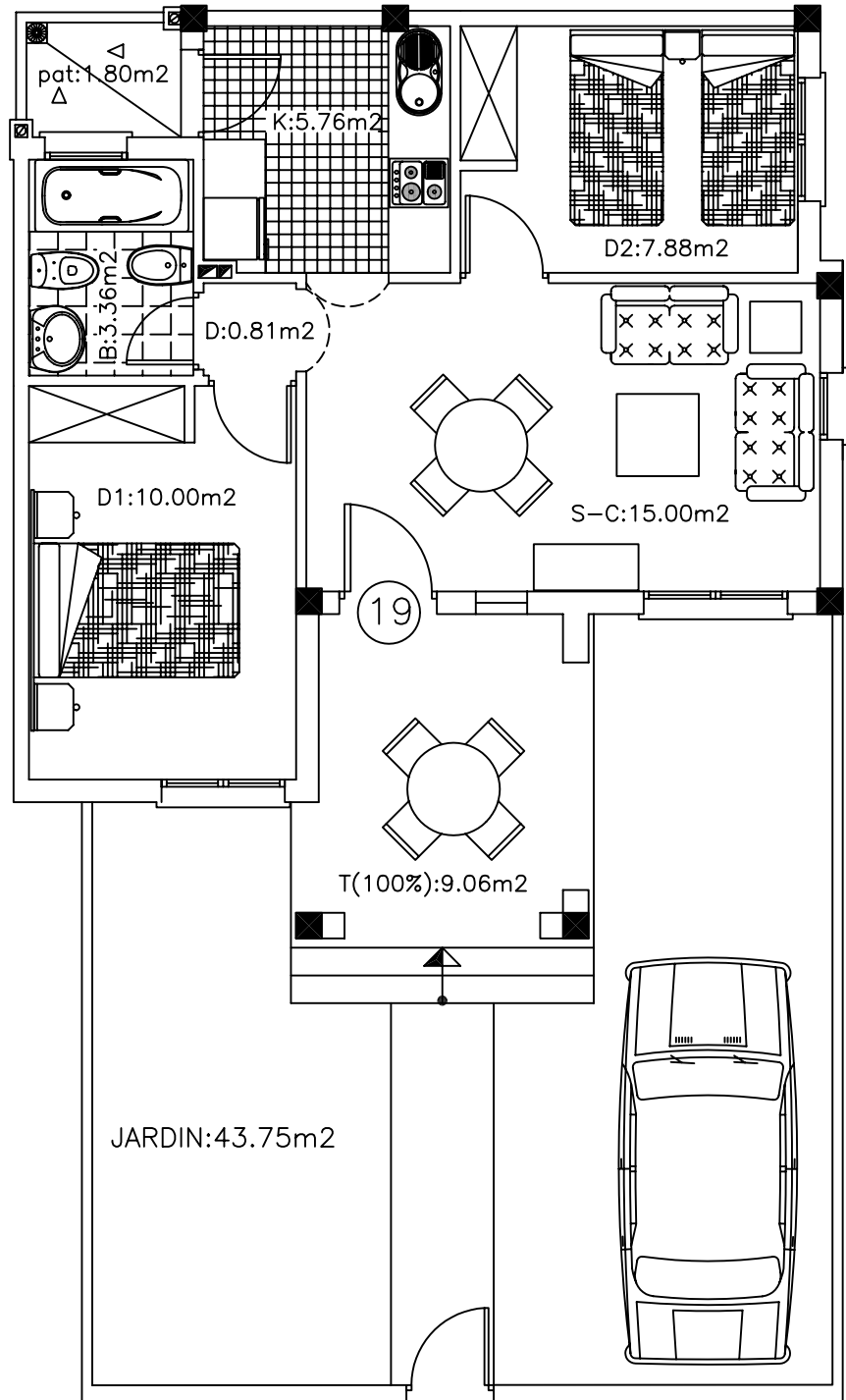
Terraza = 9,06 m²

Patio = 1,80 m²

Jardín = 68,93 m²

PLANTA BAJA (BLOQUE 3)

EL BALCON DE LA LAGUNA



Vivienda 19

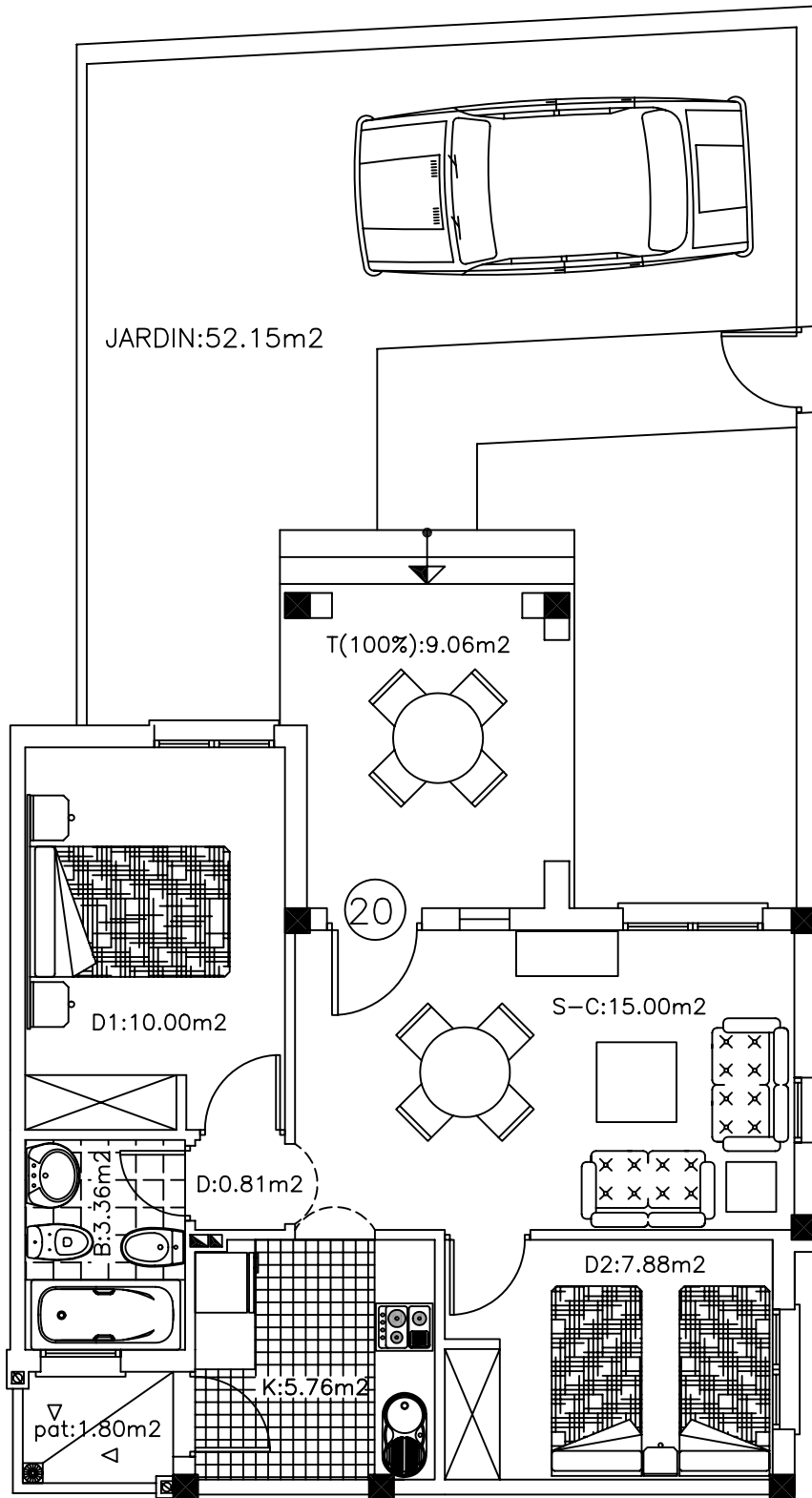
Vivienda = 49,32 m²

Terraza = 9,06 m²

Patio = 1,80 m²

Jardín = 43,75 m²

EL BALCON DE LA LAGUNA



Vivienda 20

Vivienda = 49,32 m²
Terraza = 9,06 m²
Patio = 1,80 m²
Jardín = 52,15 m²

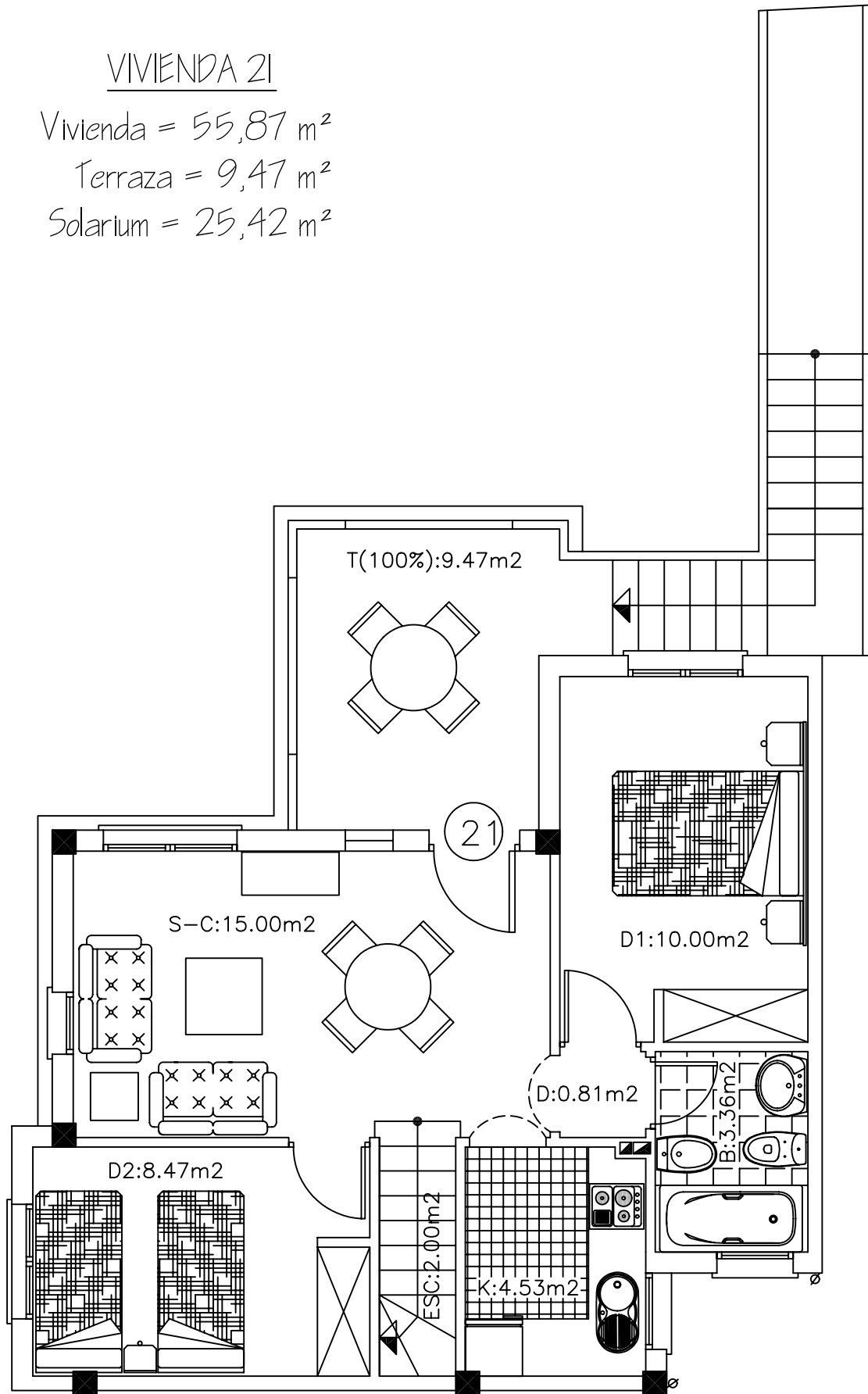
EL BALCON DE LA LAGUNA

VIVIENDA 21

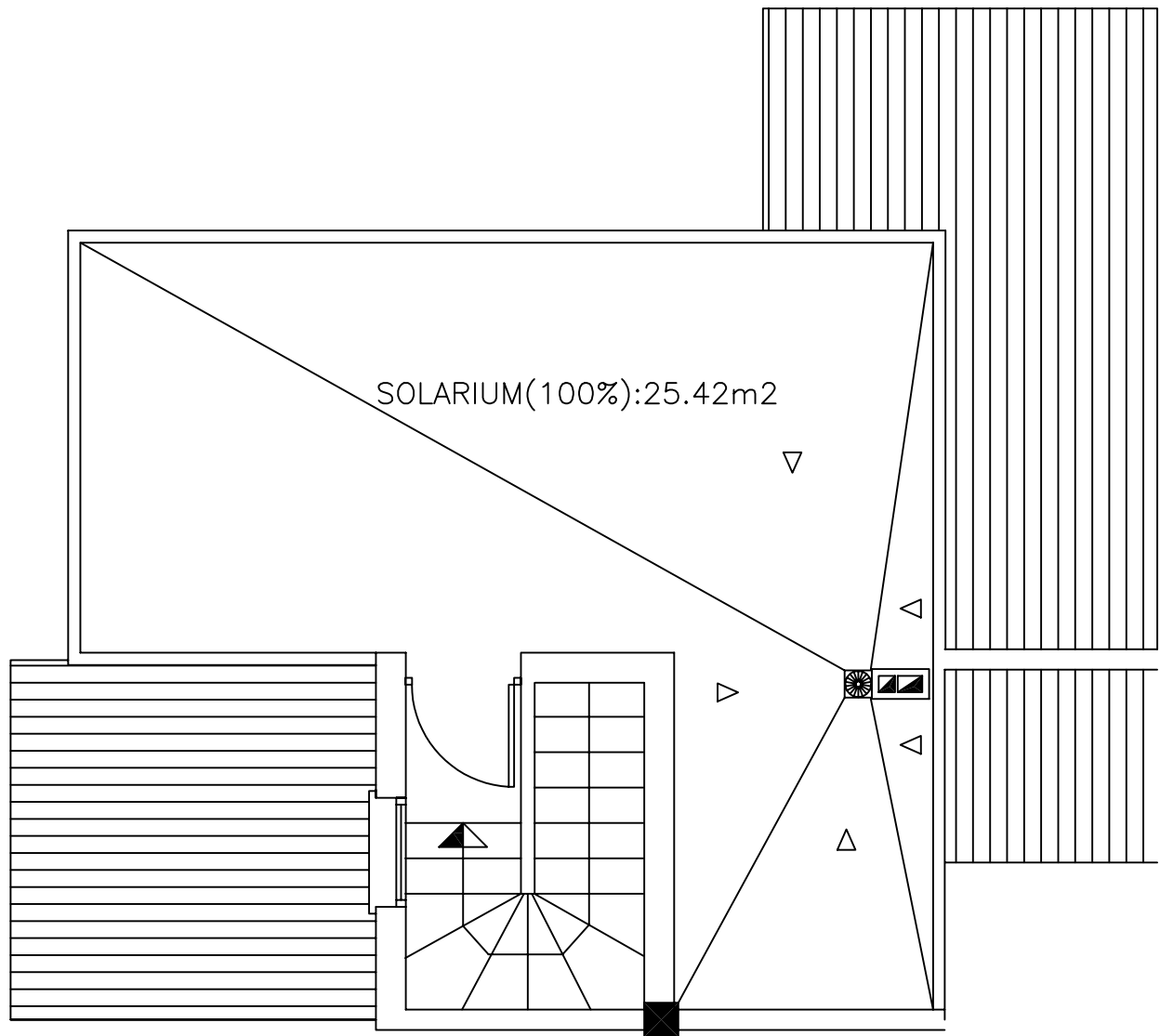
Vivienda = 55,87 m²

Terraza = 9,47 m²

Solarium = 25,42 m²



EL BALCON DE LA LAGUNA



VIVIENDA 21

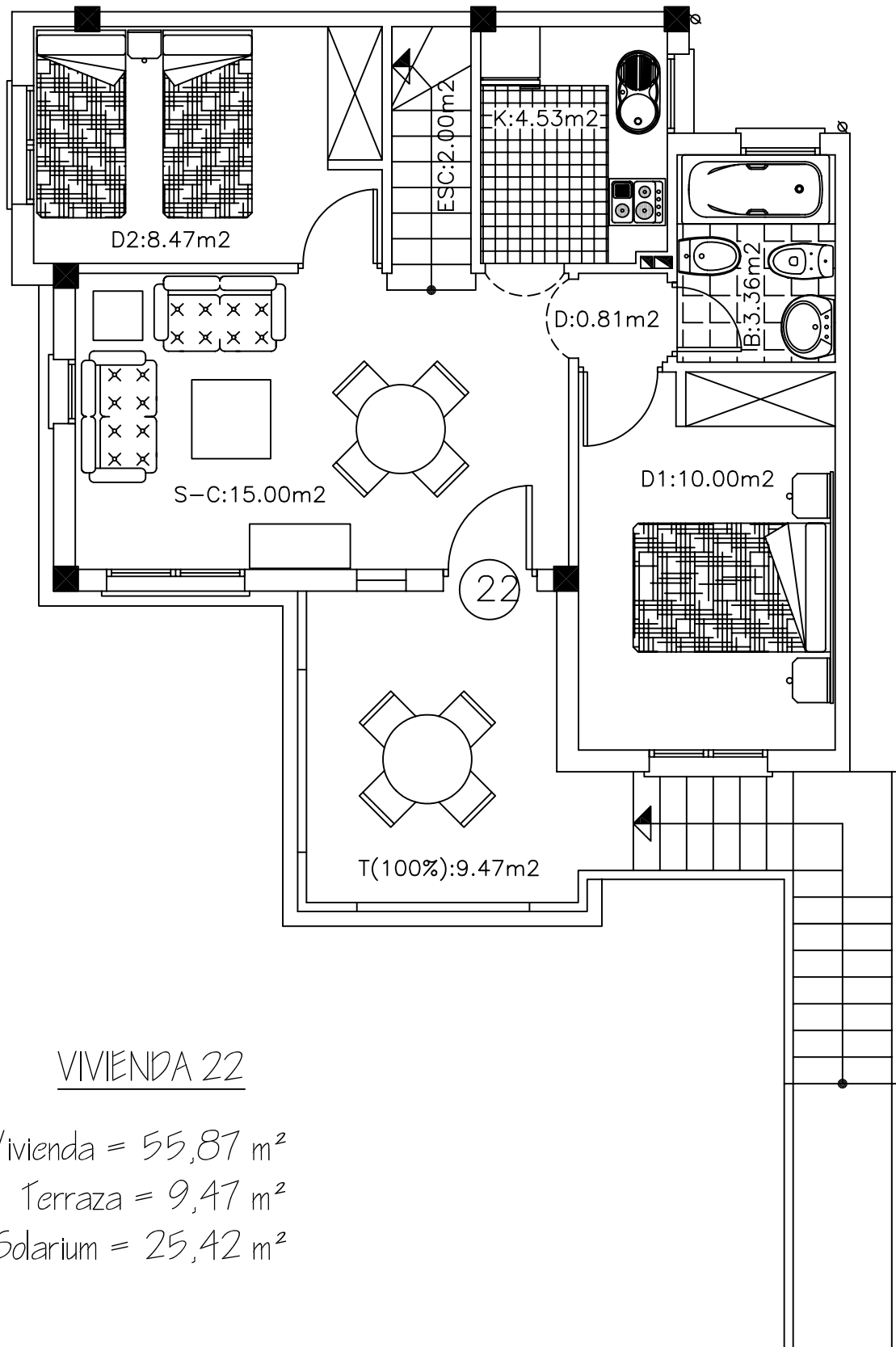
Vivienda = 55,87 m²

Terraza = 9,47 m²

Solarium = 25,42 m²

PLANTA PRIMERA (BLOQUE 3)

EL BALCON DE LA LAGUNA



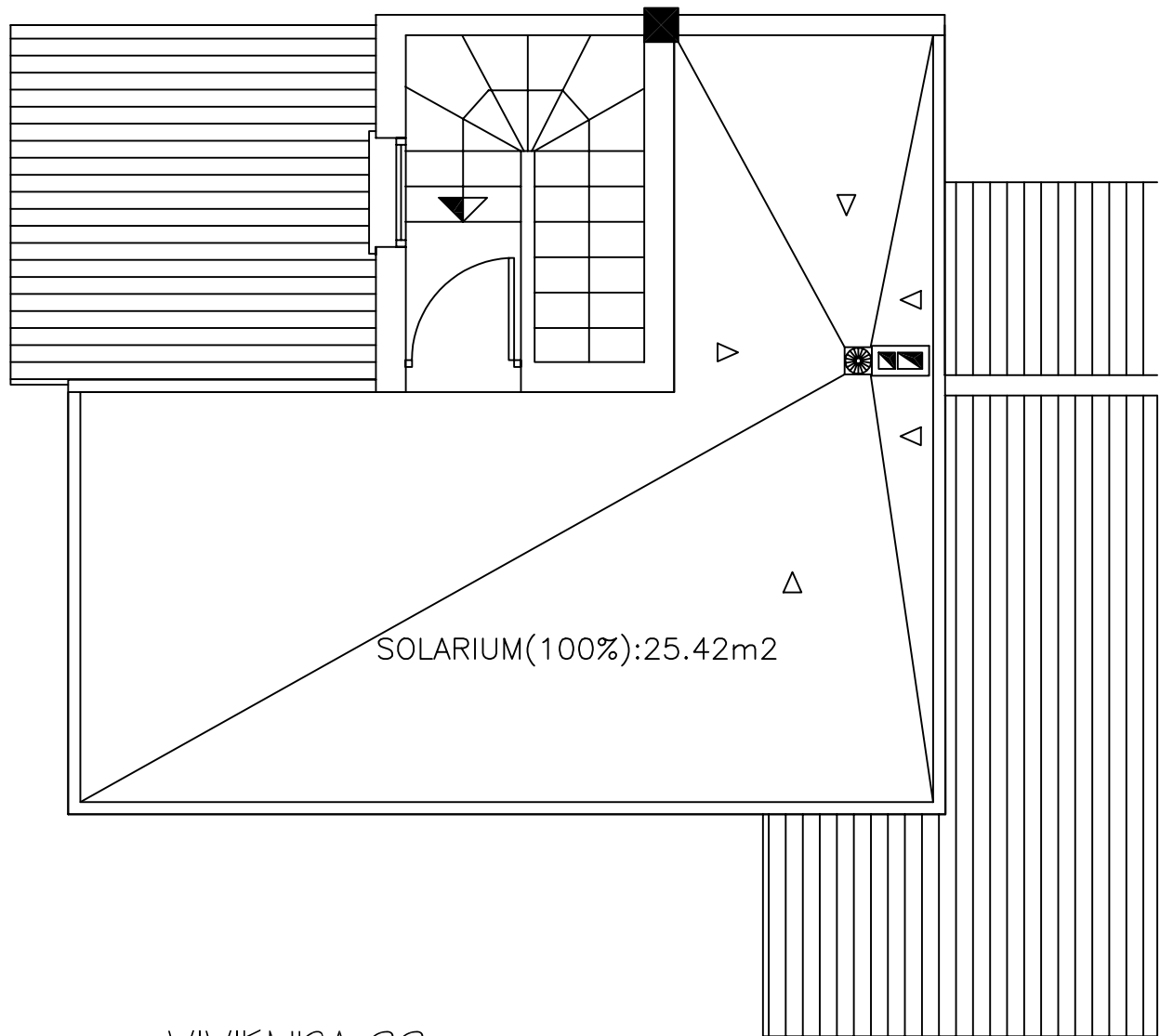
VIVIENDA 22

Vivienda = 55,87 m²

Terraza = 9,47 m²

Solarium = 25,42 m²

EL BALCON DE LA LAGUNA



VIVIENDA 22

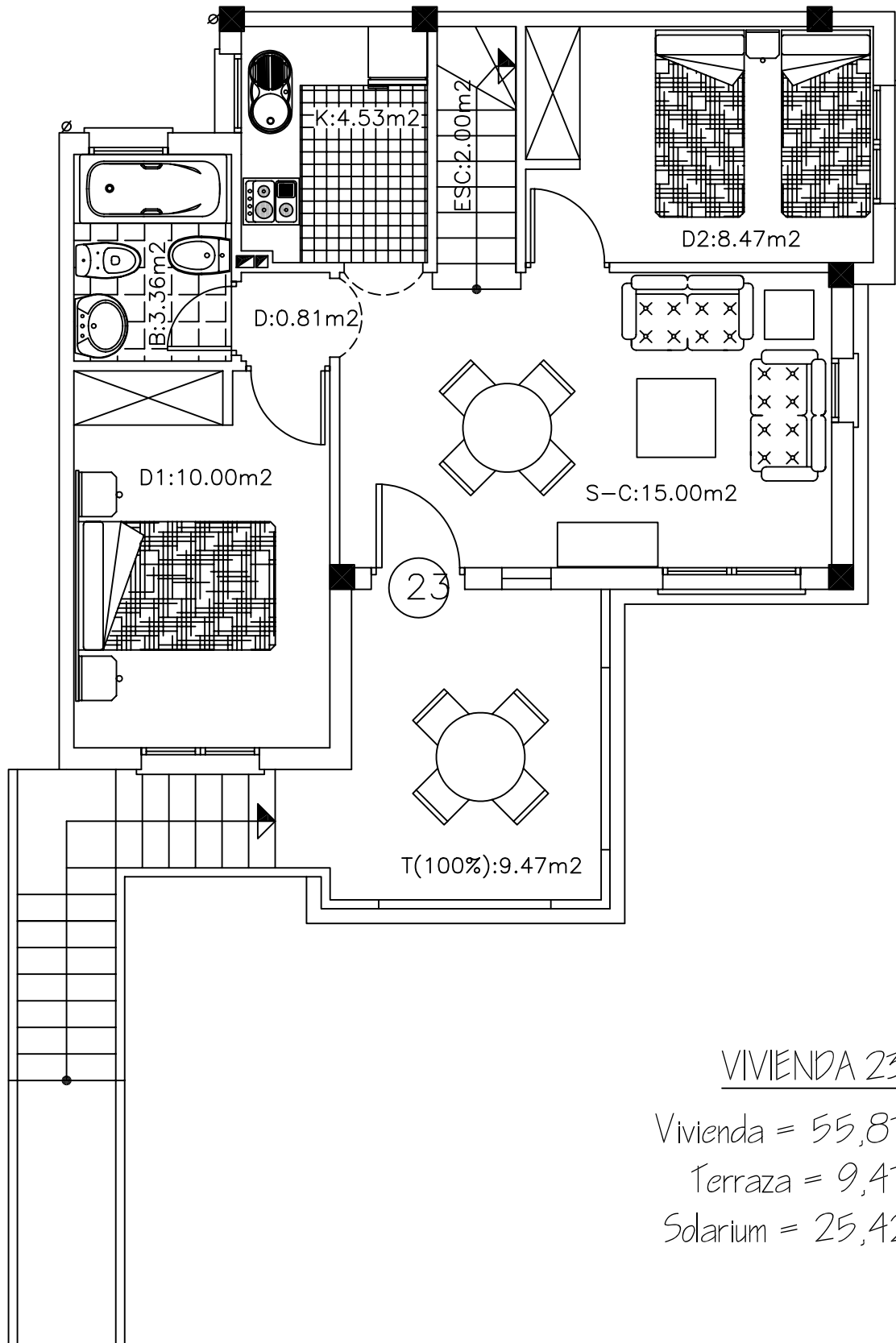
Vivienda = 55,87 m²

Terraza = 9,47 m²

Solarium = 25,42 m²

PLANTA PRIMERA (BLOQUE 3)

EL BALCON DE LA LAGUNA



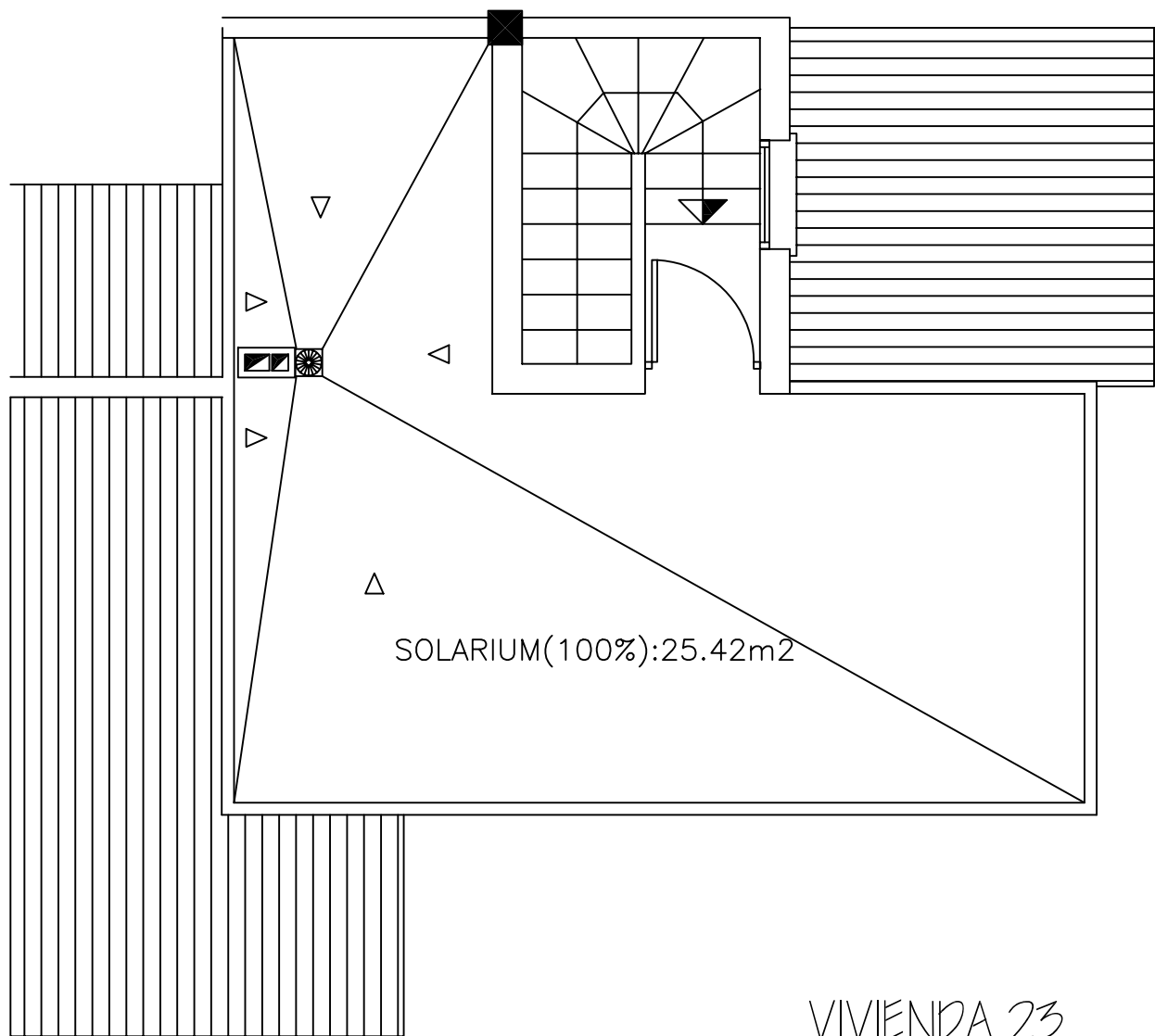
VIVIENDA 23

Vivienda = 55,87 m²

Terraza = 9,47 m²

Solarium = 25,42 m²

EL BALCON DE LA LAGUNA



VIVIENDA 23

Vivienda = 55,87 m²

Terraza = 9,47 m²

Solarium = 25,42 m²

PLANTA PRIMERA (BLOQUE 3)

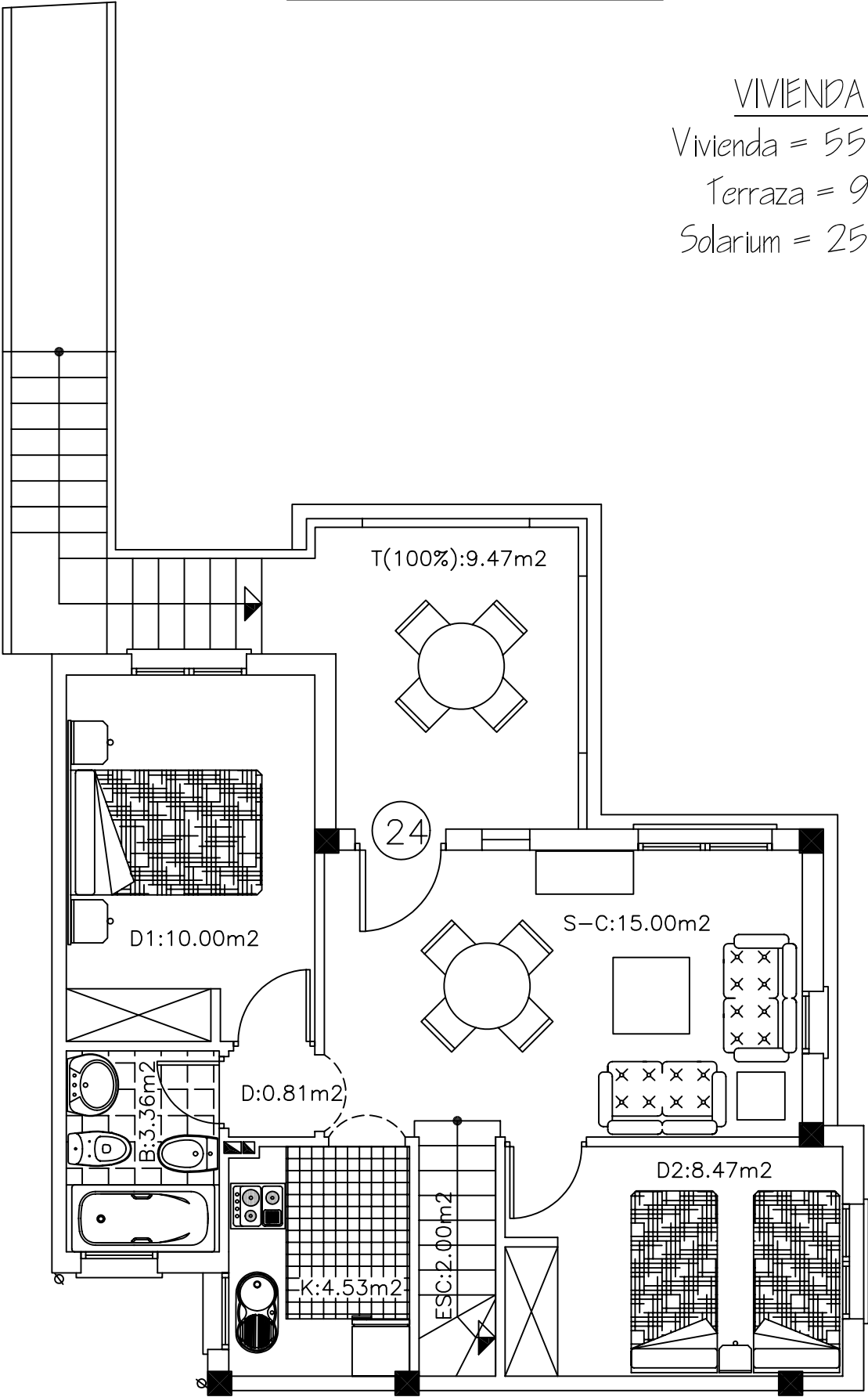
EL BALCON DE LA LAGUNA

VIVIENDA 24

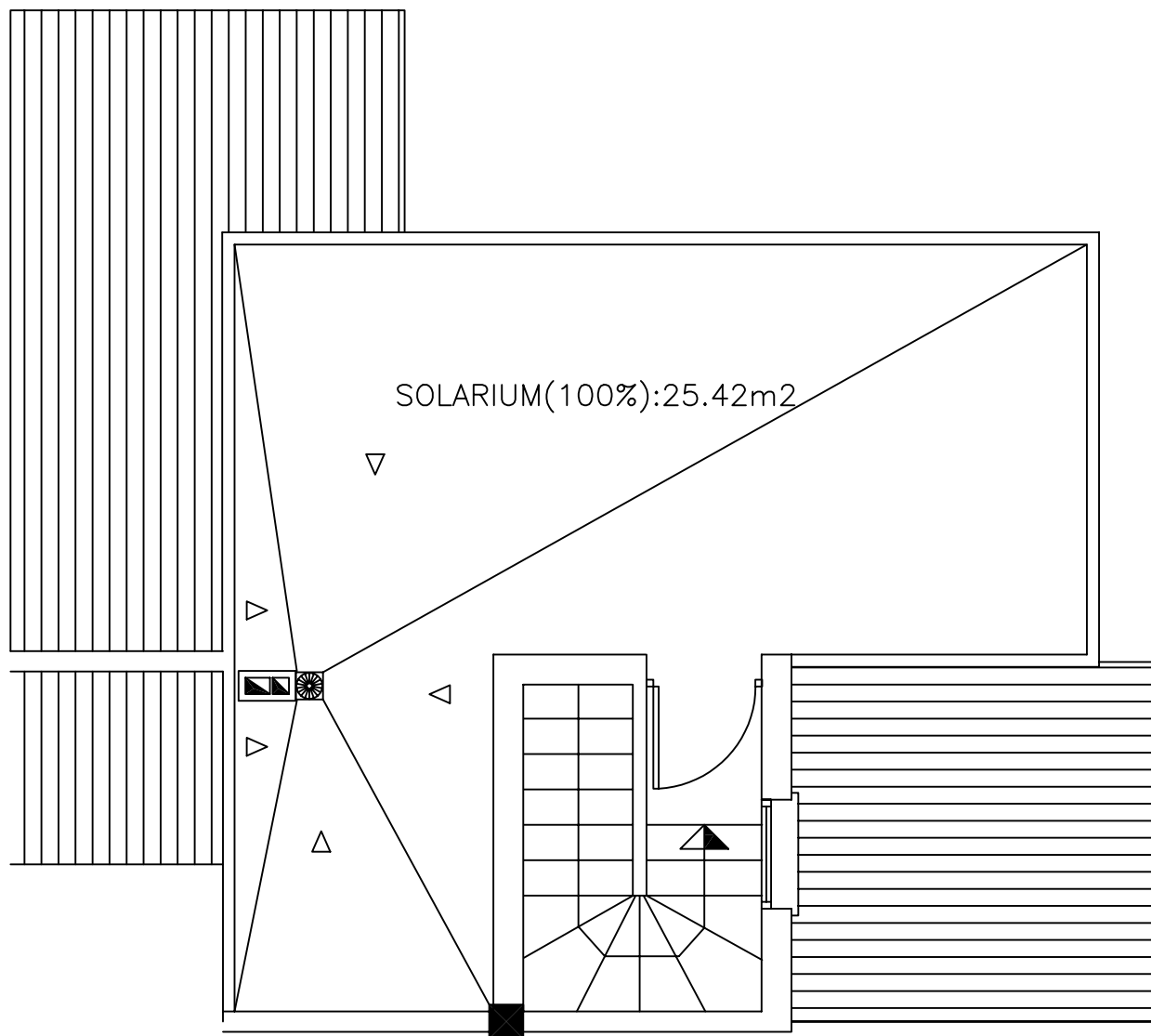
Vivienda = 55,87 m²

Terraza = 9,47 m²

Solarium = 25,42 m²



EL BALCON DE LA LAGUNA



VIVIENDA 24

Vivienda = 55,87 m²

Terraza = 9,47 m²

Solarium = 25,42 m²

PLANTA PRIMERA (BLOQUE 3)

BALCON DE LA LAGUNA

Building specifications

- Foundation of reinforced concrete.
 - Structure of reinforced concrete with one-way pillars and floor structure.
 - Exterior walls with double bricks.
 - Interior walls will be made in brick of 7 cm.
 - Roofs finished in ceramic curved tiles.
 - Continuous single-layer mortar facing on facades.
 - Tiling in kitchen, bathrooms and covered balcony with ceramic glazed tiles.
 - Flooring and skirting board will be made of first quality earthenware.
 - Interior areas will be rendered plaster.
 - Reinforced front door finished in wood with security locks.
 - Interior carpentry in pine wood.
 - Grills in ground floor's windows.
 - Exterior carpentry in Inequered aluminium with 4+6+4 millimetres glass and blinds in PVC. It has not blinds in the kitchen exit and toilet's and bathroom's windows.
 - Plumbing made of copper pipes for cold and hot water with stopcocks in bathroom, kitchen and wc.
Porcelain bathroom fittings, Roca make or similar. One drive plumbing, stainless steel sink and 50 litres electric water heater.
- All properties will have a tap at the entrance or solarium.
- Kitchen upper and lower cupboards in pine wood with granite worktop.
 - Plastic paint in Properties.
- Varnished doors and interiors of wardrobes.
- Electricity (5700 W power):
Installation for TV in living room and main bedroom.
Installation for phone in living room and main bedroom.
Power point in solariums.
First quality materials.
 - Pre-installation of the air conditioning in main bedroom and living room.
 - Installation for alarm. Home insurance.
 - Fully furnished. Ready to move in.
 - Private residential. All properties have private garden.
 - Communal swimming pools with adult and children's bathing areas.
 - All properties has parking space, either in the own garden or in the communal areas.

Note: The above cited materials could be replaced by others of similar or superior quality under consideration of the technical expert team.

BALCON DE LA LAGUNA

Lista de Precios – Price List

Vivienda	Sup. Vivienda Viv + Terraza + Patio	Solarium	Jardín	Total	Precio
1	49,32+9,06+1,80 m ²		76,88 m ²	137,06 m ²	151.900 €
2	49,32+9,06+1,80 m ²		79,33 m ²	139,51 m ²	152.900 €
3	49,32+9,06+1,80 m ²		69,01 m ²	129,19 m ²	148.900 €
4	49,32+9,06+1,80 m ²		61,16 m ²	121,34 m ²	145.900 €
5	56,87+9,47m ²	25,42 m ²		91,76 m ²	152.900 €
6	56,87+9,47m ²	25,42 m ²		91,76 m ²	152.900 €
7	56,87+9,47m ²	25,42 m ²		91,76 m ²	152.900 €
8	56,87+9,47m ²	25,42 m ²		91,76 m ²	152.900 €
9	49,32+9,06+1,80 m ²		65,61 m ²	125,79 m ²	145.900 €
10	49,32+9,06+1,80 m ²		69,07 m ²	129,25 m ²	148.900 €
11	49,32+9,06+1,80 m ²		70,46 m ²	130,64 m ²	148.900 €
12	49,32+9,06+1,80 m ²		69,08 m ²	129,26 m ²	145.900 €
13	56,87+9,47m ²	25,42 m ²		91,76 m ²	152.900 €
14	56,87+9,47m ²	25,42 m ²		91,76 m ²	152.900 €
15	56,87+9,47m ²	25,42 m ²		91,76 m ²	152.900 €
16	56,87+9,47m ²	25,42 m ²		91,76 m ²	152.900 €
17	49,32+9,06+1,80 m ²		74,83 m ²	135,01 m ²	146.900 €
18	49,32+9,06+1,80 m ²		68,93 m ²	129,11 m ²	148.900 €
19	49,32+9,06+1,80 m ²		43,75 m ²	103,93 m ²	148.900 €
20	49,32+9,06+1,80 m ²		52,15 m ²	112,33 m ²	148.900 €
21	56,87+9,47m ²	25,42 m ²		91,76 m ²	152.900 €
22	56,87+9,47m ²	25,42 m ²		91,76 m ²	152.900 €
23	56,87+9,47m ²	25,42 m ²		91,76 m ²	152.900 €
24	56,87+9,47m ²	25,42 m ²		91,76 m ²	152.900 €

BALCON DE LA LAGUNA